

Bilingual Multicultural Education

June 11, 2020



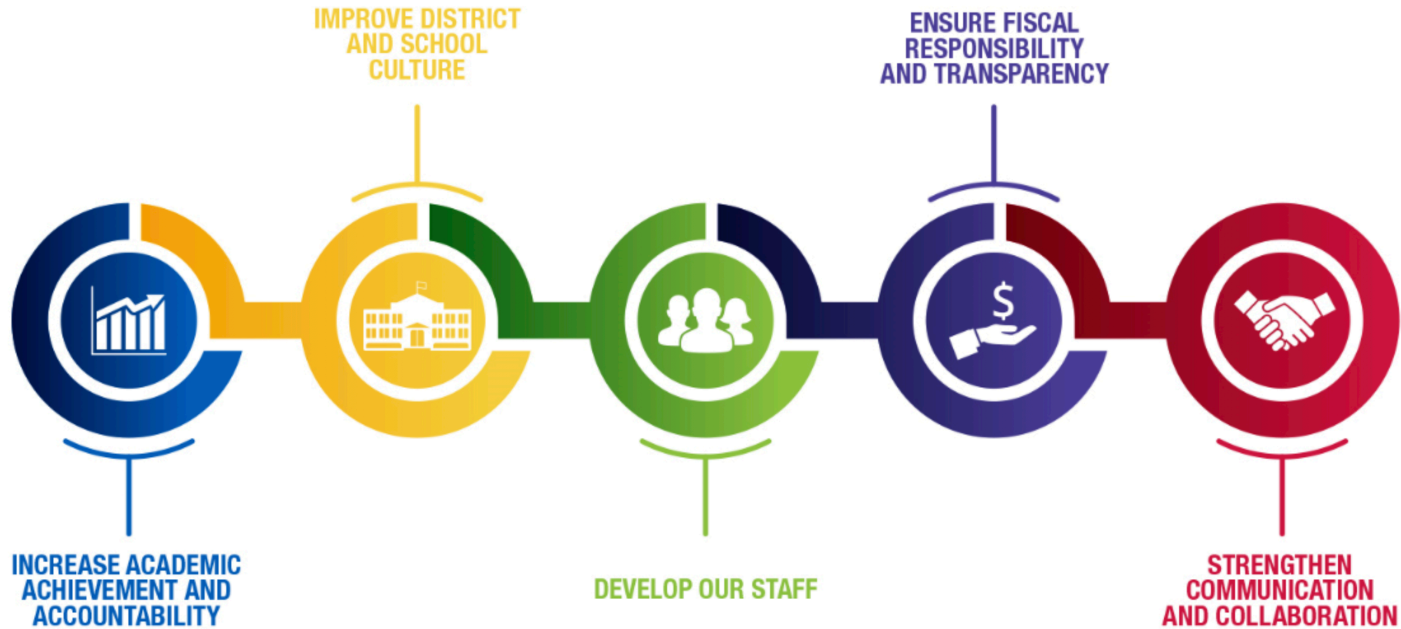
Presenters:

Eduardo Galvan, Regional Superintendent
Lorena Gueny, Manager, Bilingual Multicultural Education

MILWAUKEE
PUBLIC SCHOOLS

Dr. Keith P. Posley, *Superintendent*

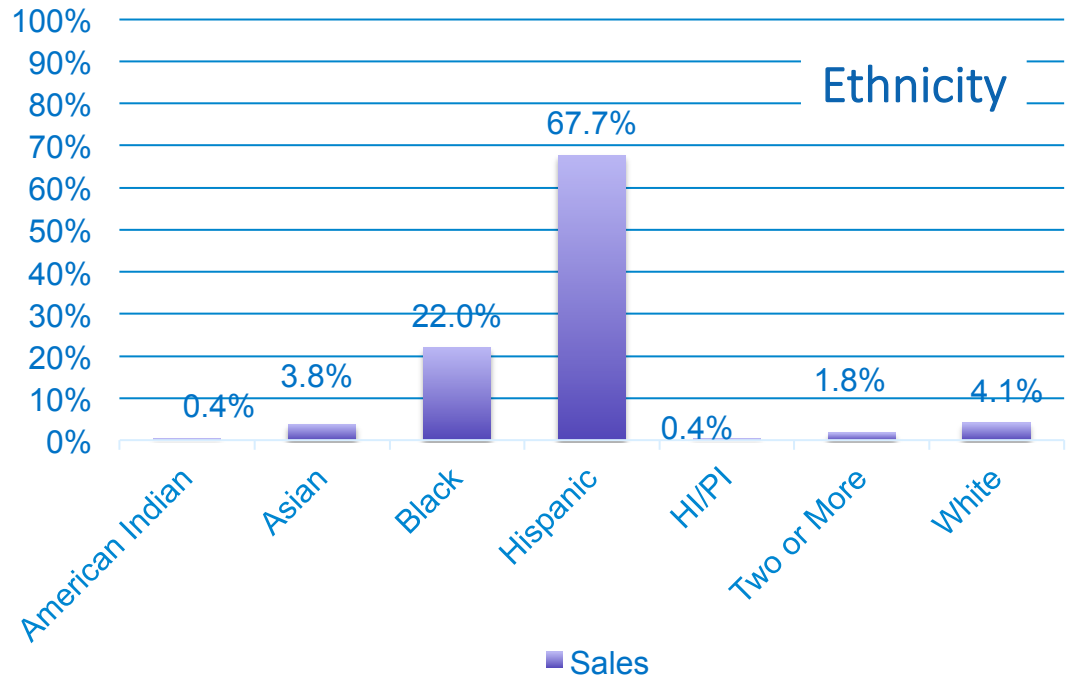
5 Priorities for Success



Bilingual Schools

Demographics 2019-20

- 13,589 Students
- 20 Schools
- 37.9% English Language Learners
- 23.1% Students with Disabilities
- 89.9% Economically Disadvantaged



Bilingual Multicultural Education (BME)

- **Mission:** The mission of the Department of Bilingual Multicultural Education is to provide equitable access to quality multilingual and multicultural programming in Milwaukee Public Schools.
- **Vision:** MPS students graduate with strong cultural and linguistic identities, leveraging these assets to navigate college, career, and life as global citizens in an inclusive society.

Fundamentals: Resolution 1415R/MPS - Update

- Bilingual expansion and programing
- Parent engagement and marketing
- DMMAC – District Multicultural Multilingual Advisory Council
- Bilingual Task Force was started
- Seal of Biliteracy
- Professional development to schools



Expansion	Ongoing	Next Steps	Timeline
Hamilton High School	Meeting with principal to decide high school programming for next year.	In the process of hiring two bilingual teachers in the core academic areas in order to meet the requirements set by the state to be recognized as a bilingual/bicultural program.	For 2019-2020: 1 bilingual math teacher. For 2020-2021: 1 bilingual language arts teacher. For 2020-2021: 1 bilingual science For 2020-2021: 1 bilingual elective - business
Riverside University High School	Meet with principal to discuss possibilities on growing the bilingual program.	Meet with principal to program and begin hiring process for an additional bilingual staff for 11 th and 12 th grade.	Met with principal on March 9, 2020. Plans to meet with staff to discuss programming and expansion were put on hold due to pandemic. Will be adding a bilingual science/chemistry section in the fall.
Morgandale School (K-8)	Explore options for adding a dual language one-way Immersion at the K4 level and growing to 8 th grade.	Meet with principal to explore best program options for expansion.	Discussions with school administrator (May 19, 2020) to determine next steps for 2020-2021. Develop survey for community and staff. Possible expansion for 2021-2022.
Kagel	Expansion has begun successfully in K4.	Addition of K5 two-way immersion dual language class. Exploring possibilities to expand to 8 th grade one-way dual language.	For the 2020-2021 year, implement the K5 dual language two-way immersion, with continued growth each year.
Riley	Expansion has already taken place at K3- 1 st grade.	Addition of 2 nd grade Montessori two-way dual language. Provide ongoing professional development in dual language Montessori.	For the 2020-2021 school year, add up to 2 nd grade in the dual language Montessori program with continued growth in 2021-2022.
Lincoln Ave.	Conversations with principal about the existing program.	Addition of a K4 bilingual classroom due to increased enrollment.	Starting in fall of 2020, addition of K4 bilingual classroom. This growth will continue in fall 2021 when those students move to K5.
Location in Northwest to be determined - ESL	Demographic data suggests need for middle and high school ESL program.	Examine data trends to determine needs and locations to place ESL services.	Starting in fall of 2021, add ESL program depending on needs and resources.

Update Item	Ongoing	Next Steps	Timeline
District Multicultural Multilingual Advisory Committee (DMMAC) parent engagement and marketing	DMMAC has met 4 times and will continue to meet in the fall. Professional development was planned, but due to COVID-19 was postponed.	DMMAC will continue to meet and provide PD and information to members of the community.	DMMAC will reconvene in the fall of 2020.
Bilingual Task Force	The Bilingual Task Force had its first meeting on January 16, 2020. This group includes parents, community members, MPS staff, and administration.	The task force will be meeting monthly to develop a strategic plan to address the Board's action on promoting bilingual workforce development.	The Task Force will meet virtually in June of 2020.
Seal of Biliteracy	Reviewing data for potential candidates to receive the Seal of Biliteracy for the upcoming year.	Coordinators and advisors will share data on the number of students that successfully met the criteria to earn the Seal of Biliteracy in 2019-2020.	In spring 2020, approximately 40 students were on track to receive the Seal of Biliteracy. To date, 21 students have met criteria. This number is expected to increase in 2021.
Professional Development to Schools	Collaboration among Bilingual Multicultural (BME) team and Houghton Mifflin Harcourt (HMH) staff in providing virtual professional development through a comprehensive Spanish literacy program.	To continue support to bilingual teachers through scheduled group follow-ups and one on one requests through virtual PD.	May 2020 through June 2020
English as a Second Language (ESL)	<p>The ESL team contacted all 86 ESL teachers in March to early April to support them with virtual learning ideas.</p> <p>The ESL team created a list of suggestions for schools that have EL students. The list contains best practices for working with EL students through virtual learning. The list can be used alongside the Week at a Glance document to guide instructional decision-making.</p>	<p>ESL teachers will continue to provide English Language Development (ELD) lessons weekly, and collaborate with classroom teachers.</p> <p>Continue support related to strategies to work with EL students district-wide.</p>	<p>Through the end of this school year and summer school 2020</p> <p>The implementation and monitoring of these strategies will be ongoing.</p>

Thank you.



Dr. Keith P. Posley, *Superintendent*

2020 Milwaukee Public Schools • 8