

POSTSECONDARY STUDENT DATA

September 13, 2018



MILWAUKEE
PUBLIC SCHOOLS

Presenters: Melanie R. Stewart, Director Research Assessment & Data

Keith P. Posley, Ed.D.
Interim Superintendent

FIVE PRIORITIES FOR SUCCESS

Improve District and School Culture

Ensure Fiscal Responsibility and Transparency



Increase Academic Achievement and Accountability

Develop Our Staff

Strengthen Communication and Collaboration



National Student Clearinghouse

- The national source of education verification and student outcomes research for the past 25 years
- National Student Clearinghouse provides data about post-secondary enrollment and graduation from 3,600 colleges and universities

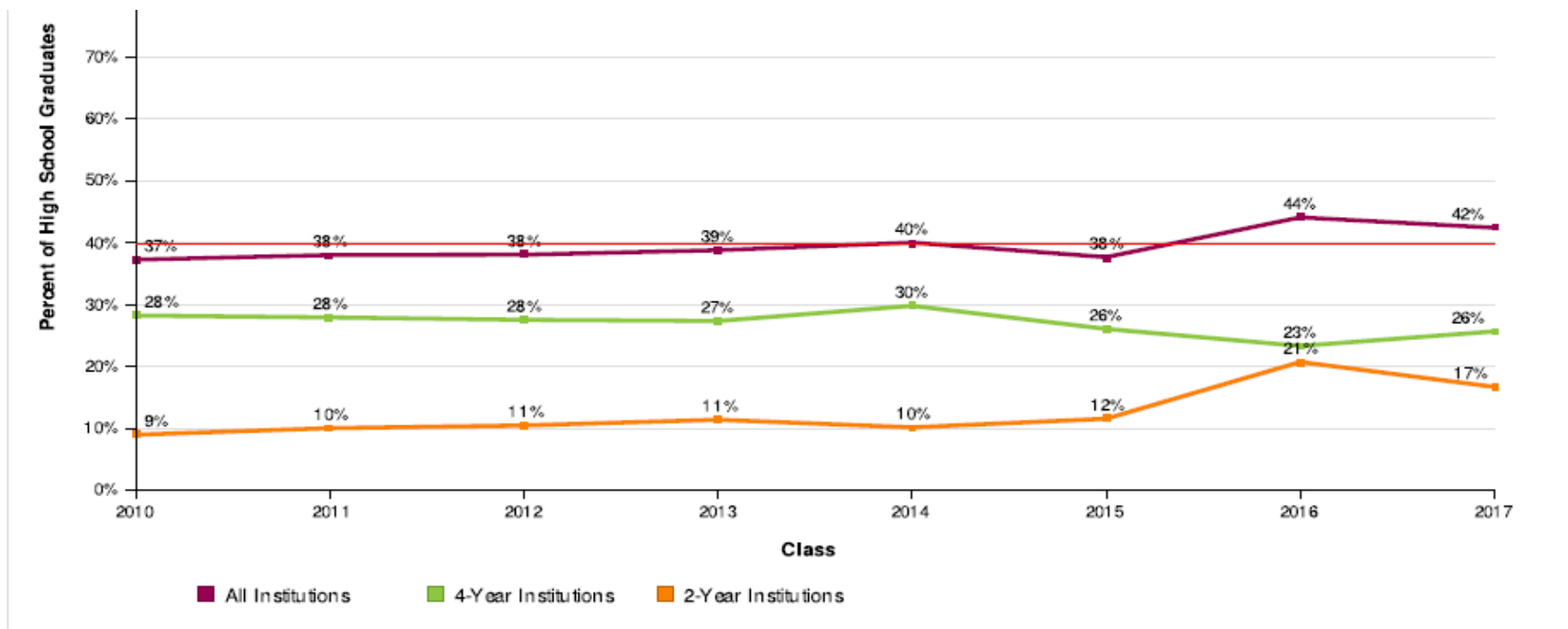


National Student Clearinghouse

The Data Resources:

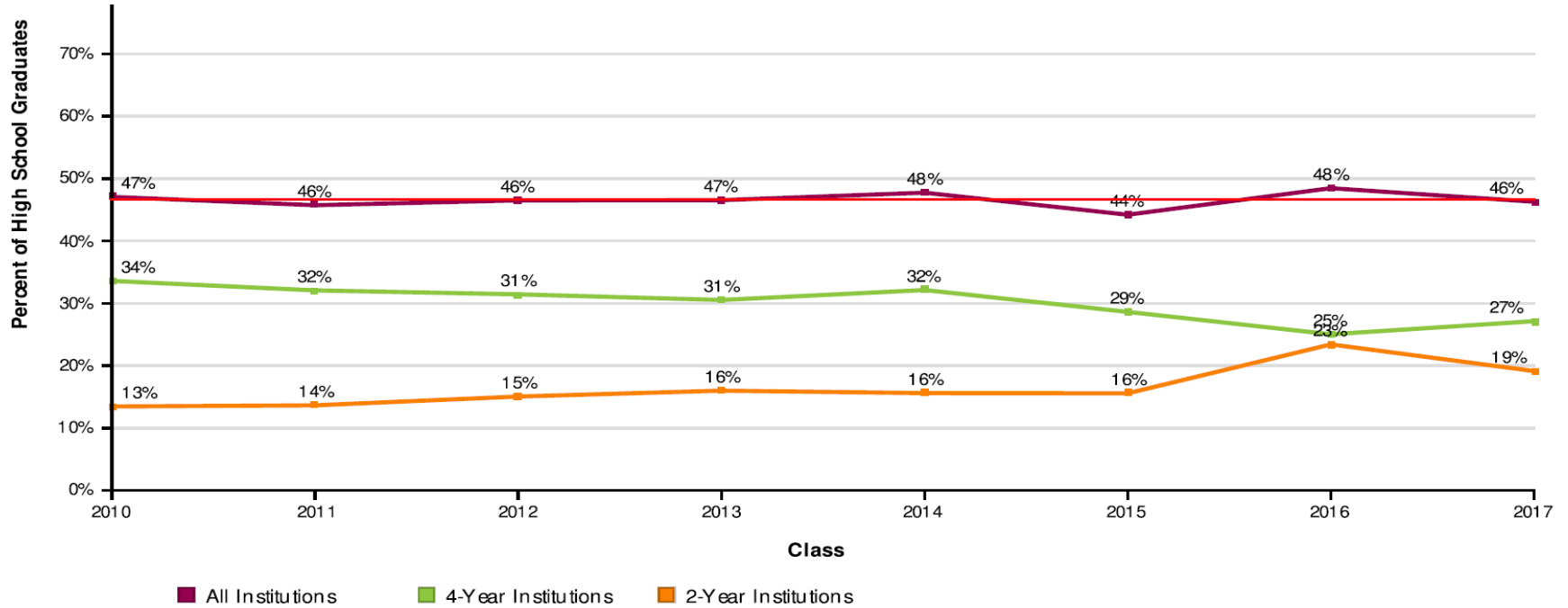
- › 97%, or 19.7 million, of currently enrolled postsecondary students (98.9% of all public and private institutions) are part of the database
- › Nearly 94% of all degrees awarded in the U.S. are tracked
- › Over 250 million historical student records have been collected

Percent of 2017 Graduates Enrolled in Fall Immediately After Graduation



AVG = 40%

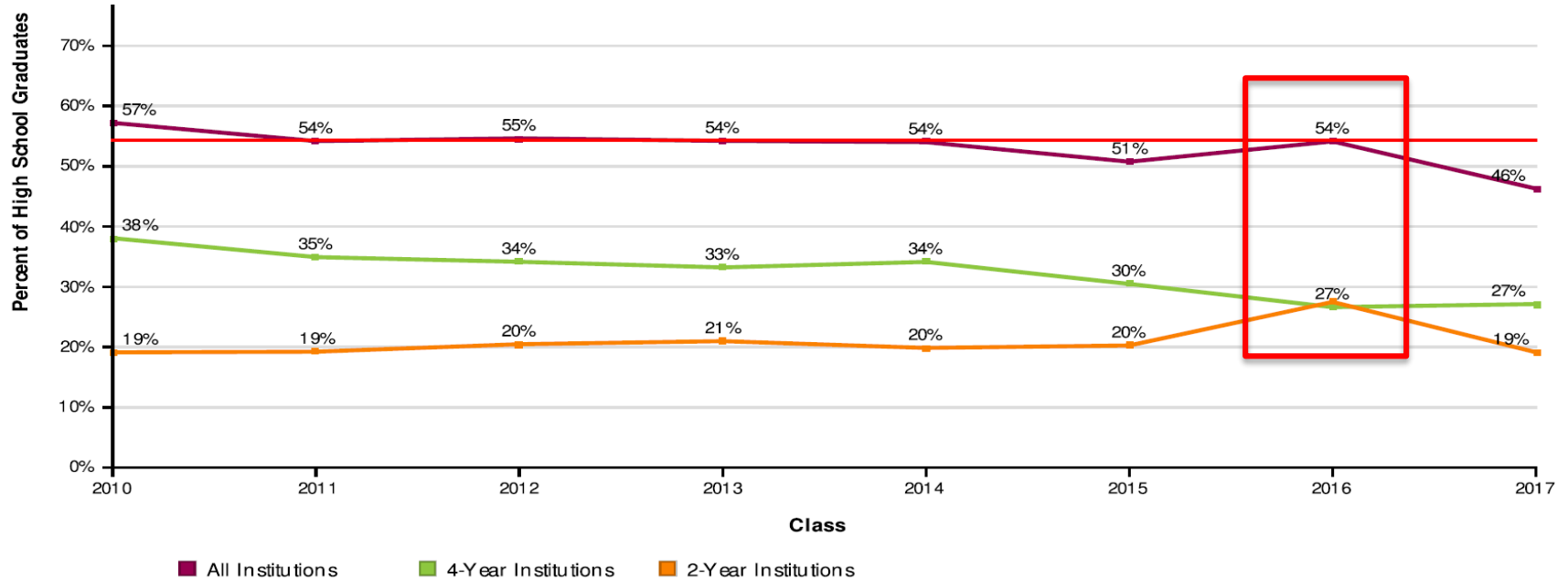
Percent of 2017 Graduates Enrolled Anytime in the First Year After Graduation



AVG = 47%



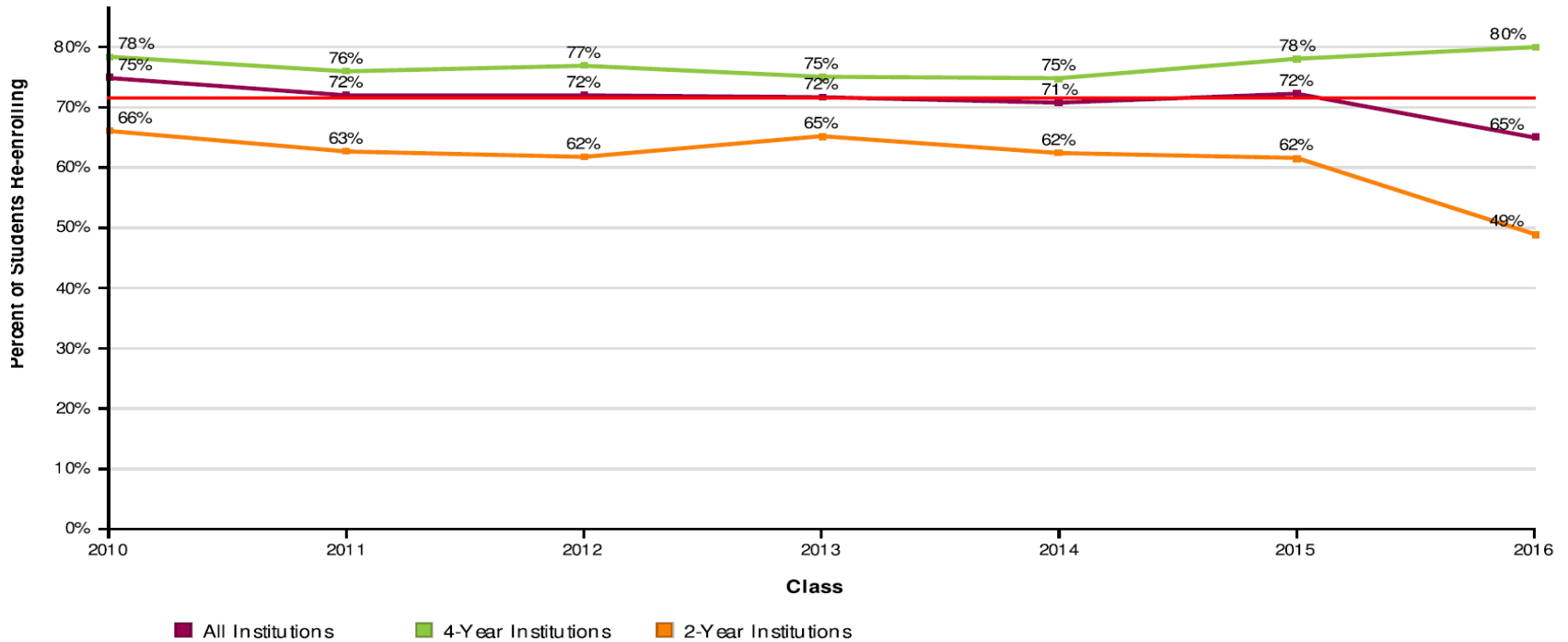
Percent of 2017 Graduates Enrolled Anytime in the Two Years After Graduation



AVG = 54%



Persistence

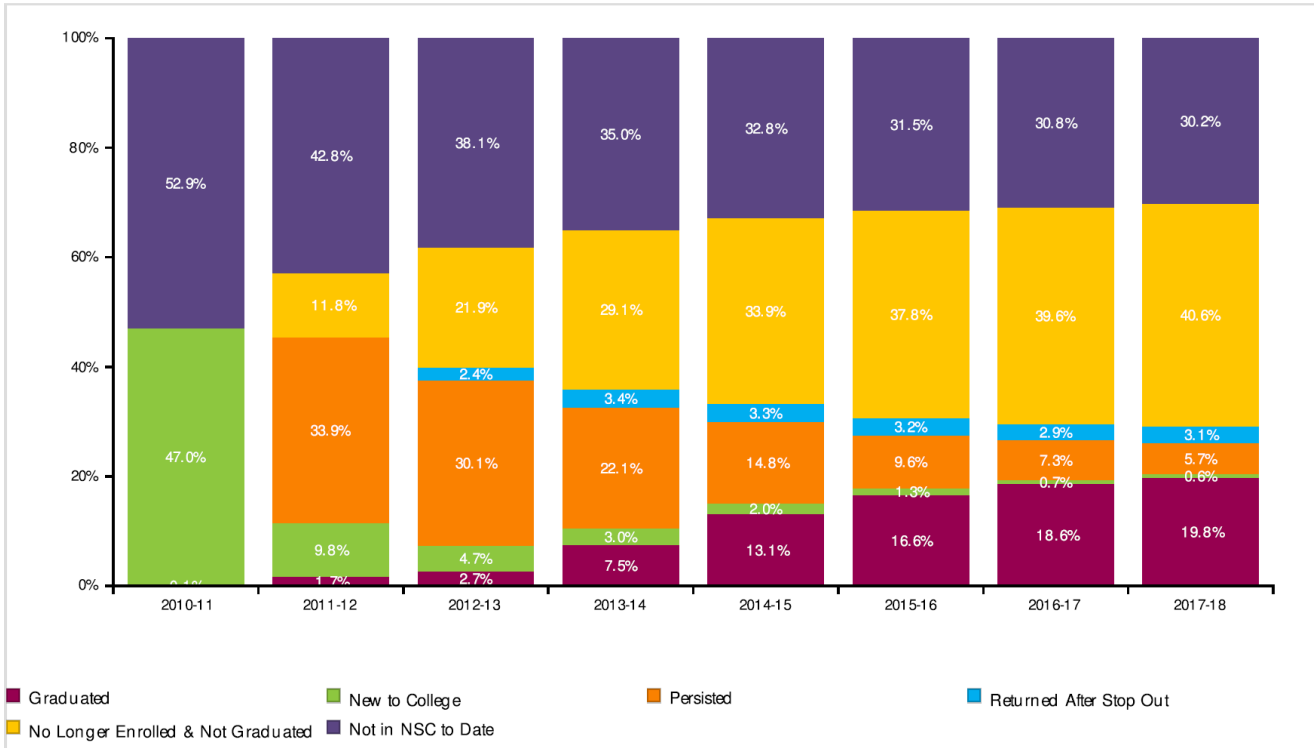


AVG = 71%



Class of 2010

Class of 2010 Postsecondary Enrollment and Progress



2017 Graduates Enrolled by School

MILWAUKEE PUBLIC HIGH SCHOOLS	Number of Students Enrolled	2017 Graduates	MILWAUKEE PUBLIC HIGH SCHOOLS	Number of Students Enrolled	2017 Graduates
Alliance High School	10	30	Milw. Community Cyber High School	16	81
Assata High School	*	21	Milw. County Youth Education Center	*	*
Audubon High School	42	86	Milw. High School of the Arts	112	193
Banner Preparatory High School	*	*	Milw. School of Languages	76	121
Barack Obama School of Career & Technical Education	19	63	Marshall High School	75	160
Bay View High School	38	109	New School For Community Service	27	74
Bradley Technology & Trade High School	55	138	North Division Charter High School	24	54
Carmen H.S. of Science & Technology (Northwest)	35	50	NOVA Middle & High School	*	19
Carmen H.S. of Science & Technology (South)	58	72	Nova Tech	*	15
Community High School	12	39	Project Stay	10	49
Grandview High School	13	56	Pulaski High School	41	144
Groppi High School	13	80	Reagan College Preparatory High School	258	346
Hamilton High School	110	276	Riverside University High School	193	336
Hmong American Peace Academy	40	54	Shalom High School	*	52
King, Rufus High School	287	356	South Division High School	77	235
Lad Lake Synergy	*	10	Transition High School	16	102
M.A.T.C. Emerging Scholars Program	*	12	Vincent High School	55	183
MacDowell Montessori School	14	28	Washington H.S. of Information Technology	39	114
Madison Academic (JMAC)	39	153	WI Conservatory/Lifelong Learning	10	23

* Less than 10 students



Most Common Institutions of Enrollment in the Fall Immediately following High School Graduation for All Classes by Number of Students

Name	Rank	State	Level	Type	Total
MILWAUKEE AREA TECH COLLEGE	1	WI	2-year	Public	2,920
UNIVERSITY OF WISCONSIN - MILWAUKEE	2	WI	4-year	Public	2,239
UNIVERSITY OF WISCONSIN - MADISON	3	WI	4-year	Public	574
UNIVERSITY OF WISCONSIN - WHITEWATER	4	WI	4-year	Public	482
BRYANT & STRATTON COLLEGE - MILWAUKEE EAST	5	WI	4-year	Private	430
ALVERNO COLLEGE	6	WI	4-year	Private	408
MARQUETTE UNIVERSITY	7	WI	4-year	Private	311
MOUNT MARY UNIVERSITY	8	WI	4-year	Private	291
UNIVERSITY OF WISCONSIN - OSHKOSH	9	WI	4-year	Public	270
UNIVERSITY OF WISCONSIN - PARKSIDE	10	WI	4-year	Public	201
BRYANT & STRATTON COLLEGE-BAYSHORE	11	WI	4-year	Private	191
UNIVERSITY OF WISCONSIN - STEVENS POINT	12	WI	4-year	Public	189
CARDINAL STRITCH UNIVERSITY	13	WI	4-year	Private	151
CONCORDIA UNIVERSITY- WISCONSIN	14	WI	4-year	Private	141
UNIVERSITY OF WISCONSIN COLLEGES - WAUKESHA	15	WI	2-year	Public	122
MILWAUKEE SCHOOL OF ENGINEERING	16	WI	4-year	Private	100
LANE COLLEGE	17	TN	4-year	Private	97
UNIVERSITY OF WISCONSIN - PLATTEVILLE	18	WI	4-year	Public	89
UNIVERSITY OF WISCONSIN - LA CROSSE	19	WI	4-year	Public	80
WAUKESHA COUNTY TECHNICAL COLLEGE	20	WI	2-year	Public	80
CARROLL UNIVERSITY	21	WI	4-year	Private	74
BRYANT & STRATTON COLLEGE - MILWAUKEE WEST	22	WI	4-year	Private	70
MARIAN UNIVERSITY	23	WI	4-year	Private	63
UNIVERSITY OF MINNESOTA-TWIN CITIES UNDERGRADUATE	24	MN	4-year	Public	61
UNIVERSITY OF WISCONSIN - GREEN BAY	25	WI	4-year	Public	55



Next Steps

- Succeed in the implementation of ambitious instruction with fidelity to increase student achievement
- Increase the number of Academic Career Planning activities for students
 - Ninth grade visits to University of Wisconsin Milwaukee
 - Tenth grade visits to Milwaukee Area Technical College
 - Job Fair for students age 16 and older
 - Career Fair for students in grades 6-8

Next Steps

- Increase opportunities for students to engage in College and Career Centers
- Continue relationships with post-secondary institutions for faculty and students (e.g., M³, Dual Enrollment, Early College Credit Program)
- Continue efforts to have students complete FAFSA and post-secondary applications
- Continue efforts to support students in scholarship acquisition

Thank you.

Presenters:

Melanie R. Stewart, Director Research Assessment & Data



Keith P. Posley, Ed.D., *Interim Superintendent*

