

Regional Showcase – Southwest Region

March 11, 2021



MILWAUKEE
PUBLIC SCHOOLS

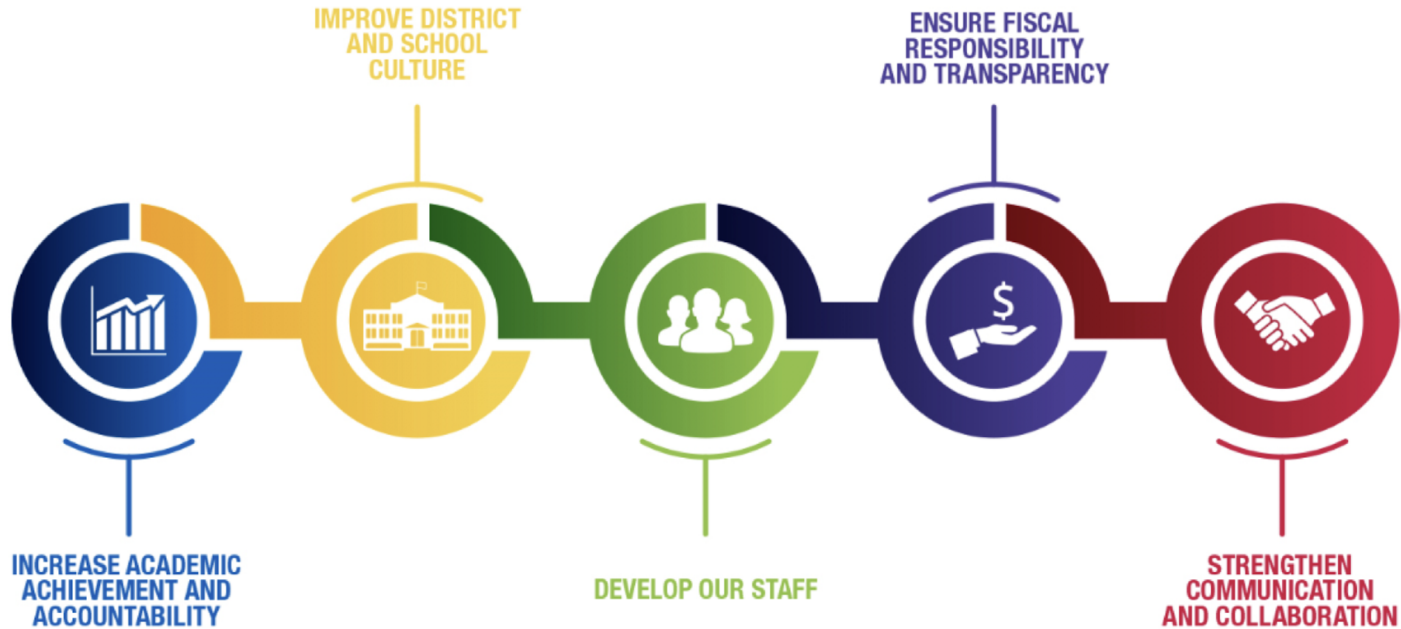
Presenters:

Eduardo Galvan, Regional Superintendent, Office of School Administration

Rosa Cerda, Principal, Longfellow School

Dr. Keith P. Posley, *Superintendent*

Five Priorities for Success

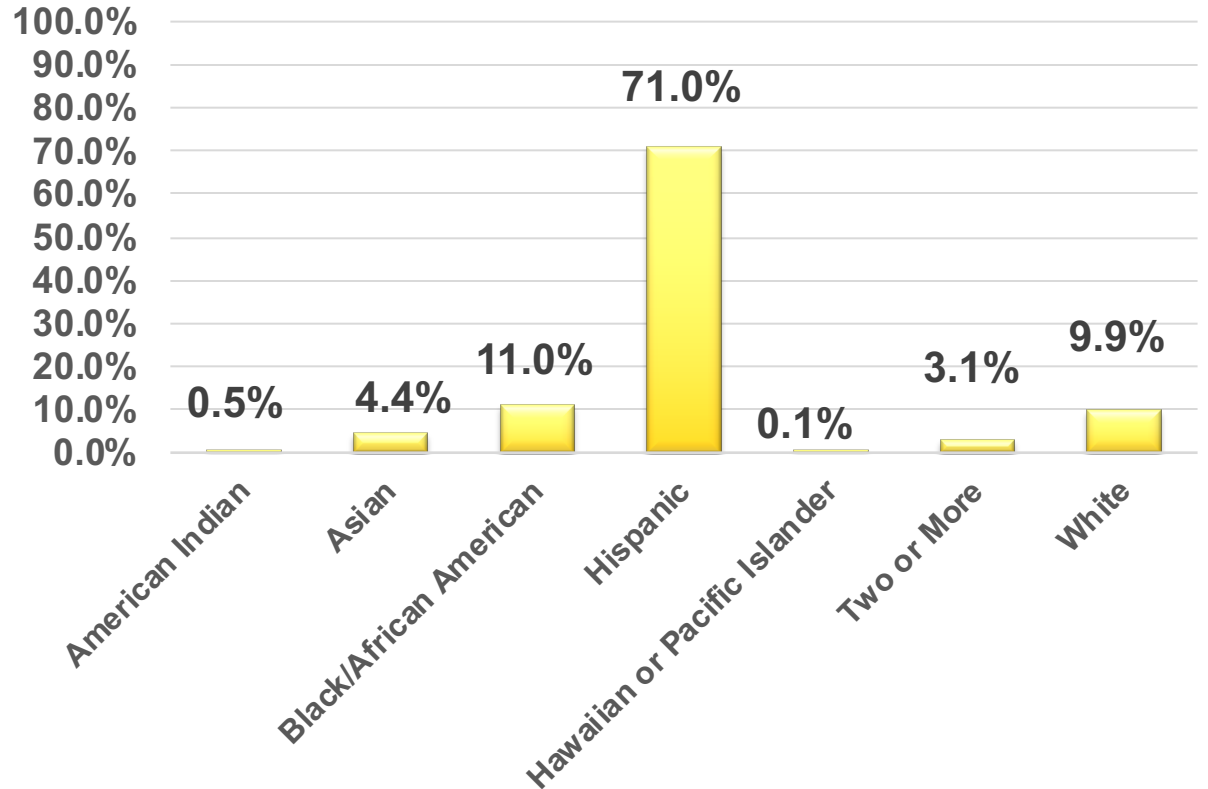


Southwest Region Schools

K-5	K-8	Bilingual	Community Schools	Academic Specialty
<ul style="list-style-type: none"> Academy of Accelerated Learning Allen-Field Forest Home Avenue Honey Creek School Lincoln Avenue School Lowell School Milwaukee Spanish Immersion School Riley Dual Language Montessori School Zablocki School 	<ul style="list-style-type: none"> Alcott School Curtin Leadership Academy Doerfler School Fairview School Grant School Greenfield School Hayes Bilingual School Longfellow School Manitoba School Mitchell School Morgandale School Rogers St. Academy Vieau School Whitman School 	<ul style="list-style-type: none"> Alba School Allen-Field School Doerfler School Forest Home Avenue School Greenfield School Hayes Bilingual School Kagel School Lincoln Avenue School Longfellow School Mitchell School Riley Dual Language Montessori School Rogers Street Academy Vieau School 	<ul style="list-style-type: none"> Longfellow School Lincoln Avenue School Zablocki School Mitchell School (readiness cohort) 	<ul style="list-style-type: none"> Academy of Accelerated Learning (IB) Lowell School (IB) Milwaukee Spanish Immersion School (MSIS) Riley Dual Language Montessori School ALBA School - Charter Honey Creek - Charter

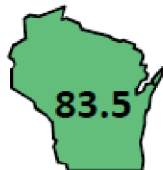
Southwest Region

- 12,575 students
- 25 schools
- 31.8% English language learners
- 22.2% students with disabilities
- 85.4% economically disadvantaged



2018-19 State Report Cards

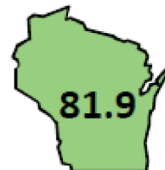
Overall Score



Significantly Exceeds Expectations

Academy of
Accelerate Learning
92.2

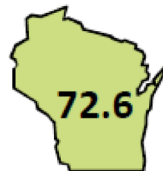
Overall Score



Exceeds Expectations

Hayes Bilingual School 81.9
Allen-Field Elementary 74.7
Kagel Elementary 73.5

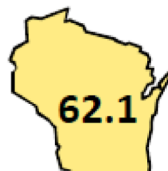
Overall Score



Meets Expectations

Whitman Elementary 72.6
Grant Elementary 71.8
Vieau Elementary 71.8
ALBA - Academia de Lenguaje y Bellas Artes 71.2
Morgandale Elementary 70.8
Rogers Street Academy 69.8
Curtin Elementary 69.6
Longfellow Elementary 67.0
Milwaukee Spanish Immersion 66.7
Greenfield Bilingual 65.3
Lincoln Avenue Elementary 65.2
Zablocki Elementary 64.7
Honey Creek Elementary 64.5
Alcott Elementary 63.1
Riley Elementary 63.0

Overall Score

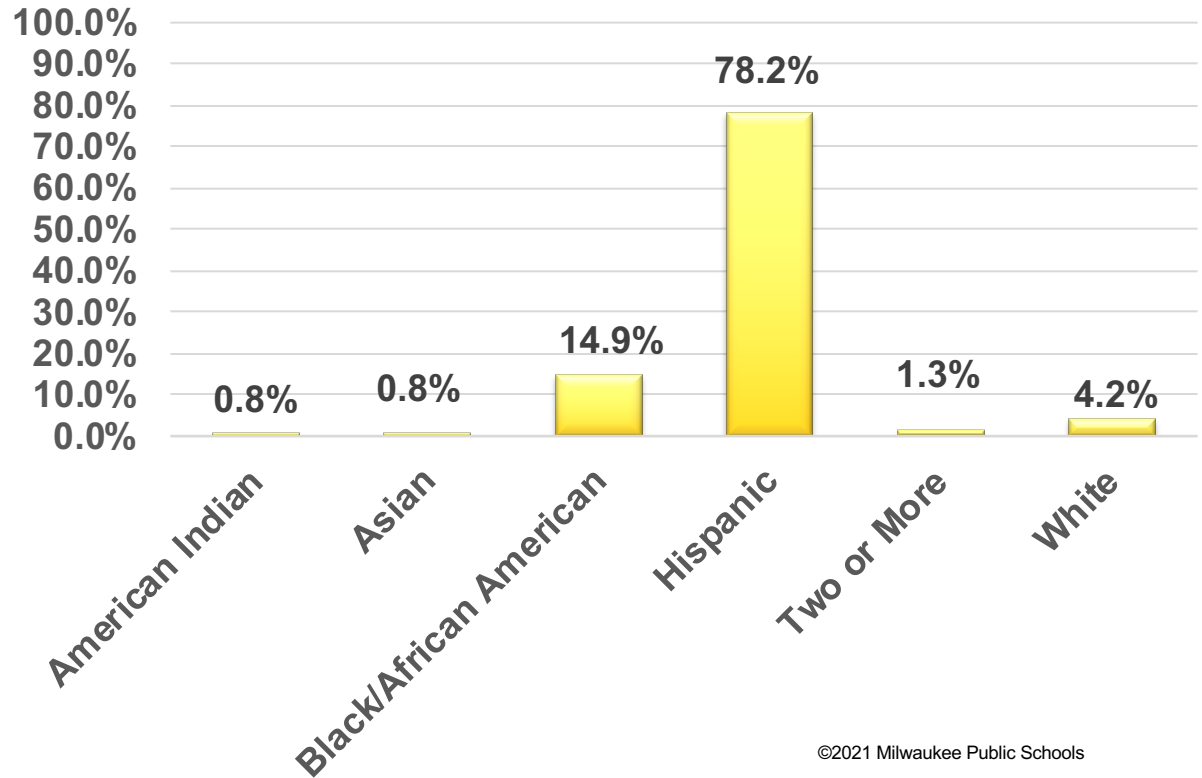


Meets Few Expectations

Forest Home Elementary 62.1
Lowell International Elementary 60.1
Manitoba Elementary 59.7
Mitchell Elementary 59.7
Doerfler Elementary 59.3

Longfellow School

- 794 students
- 32.1% English language learners
- 26.1% students with disabilities
- 89.3% economically disadvantaged



Longfellow Vision Statement

As a bilingual K-8 community school, H.W. Longfellow will collaborate with partners to provide a safe, diverse, and academically challenging environment where all students are embraced and empowered to become successful leaders.



A Proud Bilingual and Community School

Guiding Pillars for Community School:

Shared Leadership

- Staff facilitated meetings aligned to climate, academics, health/Social Emotional Learning (SEL), family, attendance

Cultural Relevance

- Intentional commitment to develop and train staff, students, and community members

Equity

- Assess, create a plan, and find the resources needed



Bilingual Education:

Bilingual Program

- Structured to develop content learning, and language development while acquiring a second language

Certified Bilingual Teachers

- Former students are now educators

Joint Planning

- Ensure Language Learners are exceeding

Parallel Teaching

- Monolingual and bilingual



Embedded Professional Development(PD)

Highlights:

Fostering a shared responsibility for the acquisition of language in all learners. (Teaching for Biliteracy Cohort)

Weekly collaborative planning time is a continuous practice for all grade level teams to discuss academic goals and plans of action. (CPT)

Exchange of teaching practices and ideas acquired from professional development are discussed and shared to meet the unique needs of our scholars. (Learning Management System -LMS)

Book study motivated by the commitment of transforming ourselves as social justice practitioners. We Want to Do More Than Survive by Bettina L. Love

Book Study: Teaching for Biliteracy by Karen Beeman & Cheryl Urow

Personalized Professional Development: Uniquely designed based on staff feedback and academic needs.

Professional Learning Community: Structures in place to make collaboration possible



Leveraging Partnerships



Academic Success



Reading Corps Data

(results for the past 3 school years)

91

Students tutored

96.2%

Avg. pct fidelity

61.0

Avg. sessions p/student

70.9

Avg. student minutes p/week

67

Students exceeding target growth

80.7%

% Students exceeding target growth

School
year/s
filtered

2018-19
2019-20
2020-21

2020-2021 School Year

- 30 students received 1:1 tutoring services virtually this year.
- Our focus is on improving the reading skills of our third graders.

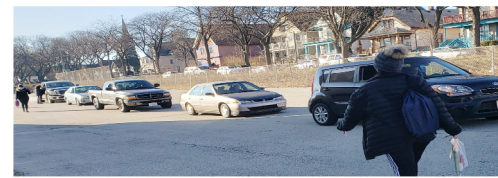


Opportunities For Academic Success

- Selected to the MPS cohort of
 - Verizon Innovative Learning Schools
 1. Always Available Access
 2. Professional Learning
 3. STEM Opportunities
 4. Research



Opportunities For Success

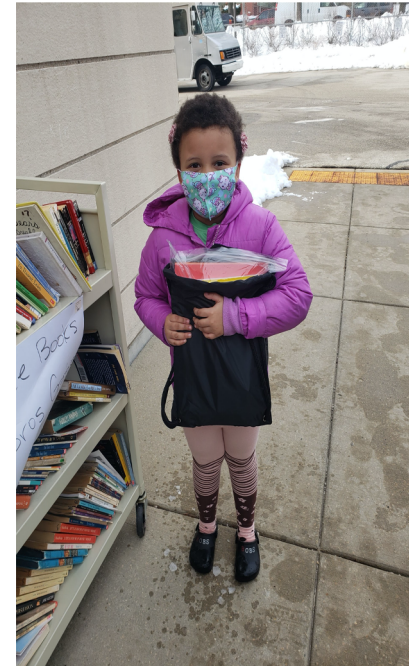


- City Year -Network for School Improvement

LONGFELLOW SCHOOL - 0256

2020-2021

Homeroom	Grade	Nbr Students	Attend Rate	Sep	Oct	Nov	Dec	Jan	Feb
Total		<u>88</u>	94.5%	95.1%	93.4%	94.7%	93.0%	95.7%	95.5%



- Ernst & Young Math Mentoring Program
- Distribution Wednesdays



Thank you.



Dr. Keith P. Posley, *Superintendent*

© 2021 Milwaukee Public Schools • 14