

M³ College Connections

September 14, 2021



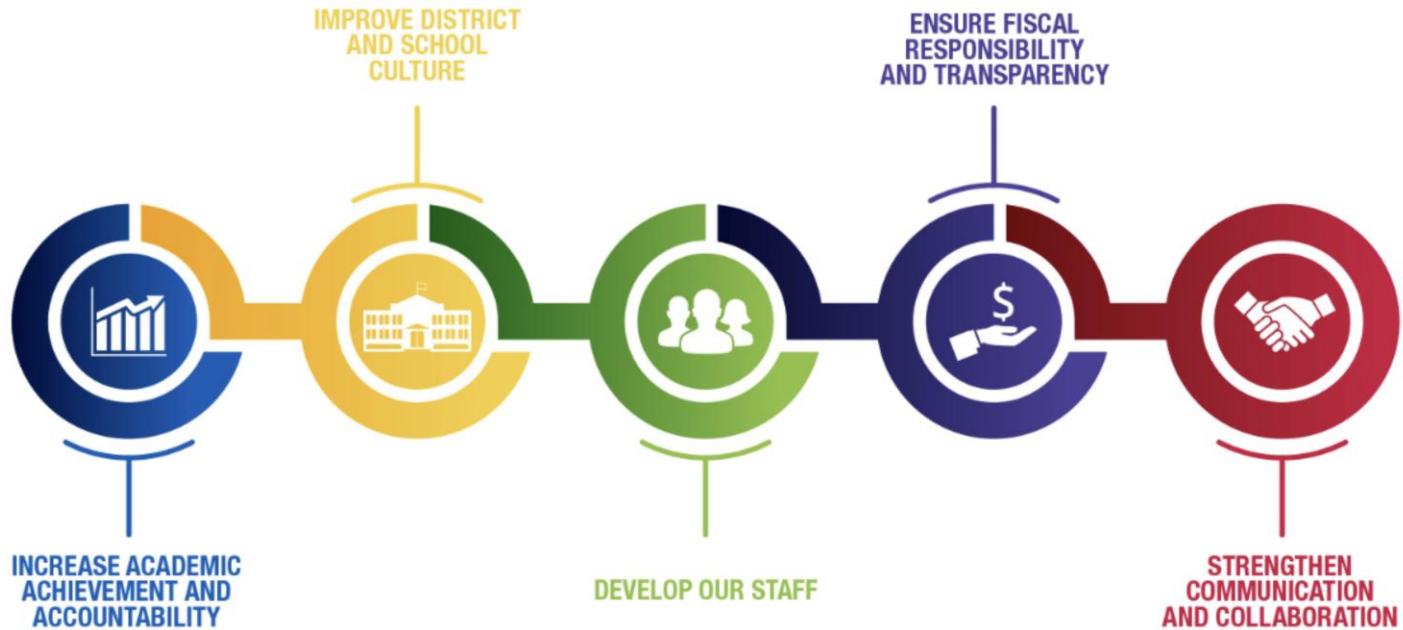
MILWAUKEE
PUBLIC SCHOOLS

Presenters:

John R. Hill, Ph.D., Director, Department of College & Career Readiness
James Sokolowski, Postsecondary Engagement Coordinator

Dr. Keith P. Posley, *Superintendent*

Five Priorities for Success



What is M³ (m-cubed)?

- M³ seeks to transform the future of Milwaukee through education.
- M³ is a collaborative partnership among the three largest public education institutions in Milwaukee:
 - Milwaukee Public Schools (MPS)
 - Milwaukee Area Technical College (MATC)
 - University of Wisconsin Milwaukee (UWM)
- MATC and UWM are the two top college destinations for MPS students.



M³



Dual Enrollment



- Dual Enrollment/Dual Credit is when high school students earn both college and high school credits at the same time through a single class.
- Wisconsin offers the Early College Credit Program and Start College Now programs.
- Funding for dual enrollment program funding varies from state by state.

Dual Enrollment in MPS

Transcripted
Credit

Early College
Credit Program/
Start College
Now

M³ College
Connections

Contracted
Courses in High
Schools

Contracted
Courses on
Campus



What is the M³ College Connections program?

- The M³ Early College program is an innovative dual enrollment program among MPS, MATC, and UWM that allows eligible students to complete their high school graduation requirements while earning college credits from both MATC and UWM at no cost to the students.
- Piloted in spring of 2019 with 32 students from 9 different high schools.
- Currently starting fourth academic year of implementation.



M³ College Connections: Design



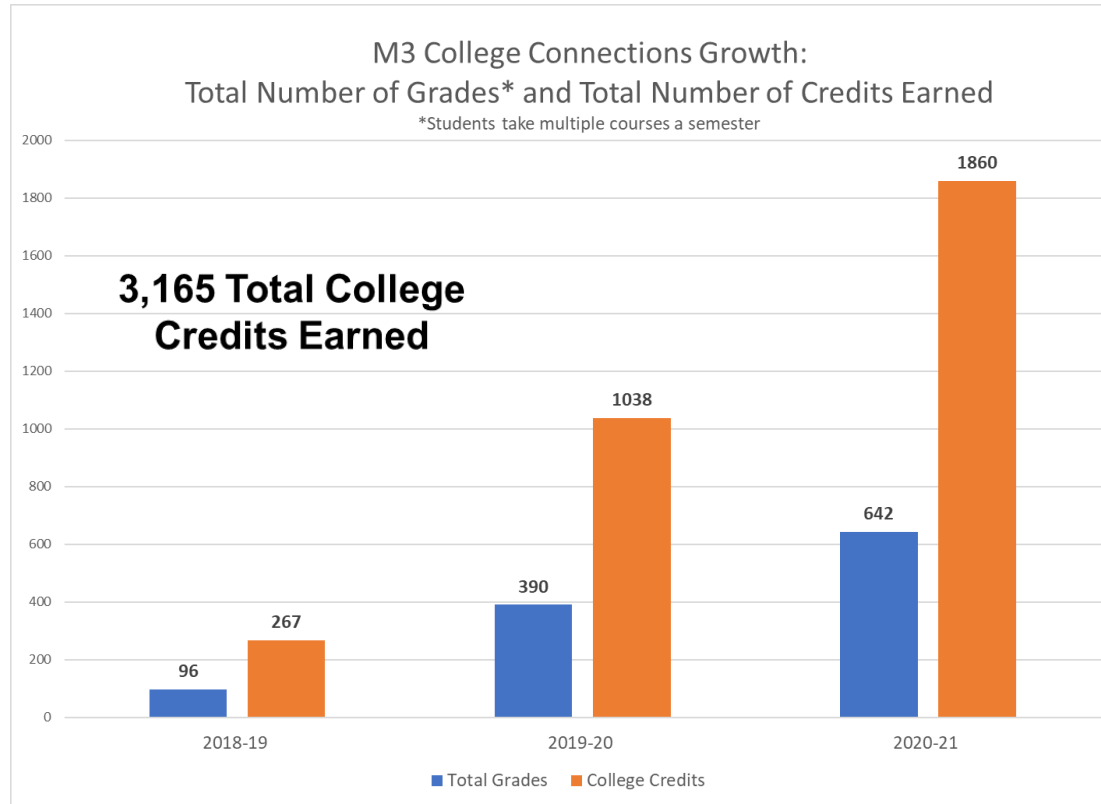
- Program, not a school
- Cohorts of students
- Corequisite model
- Contract sections
- Intentional course selection
- Multiple Pathways
- Classes on both campuses
- Students eligible for early release for good standing – on track for graduation

M³ College Connections: Recruitment

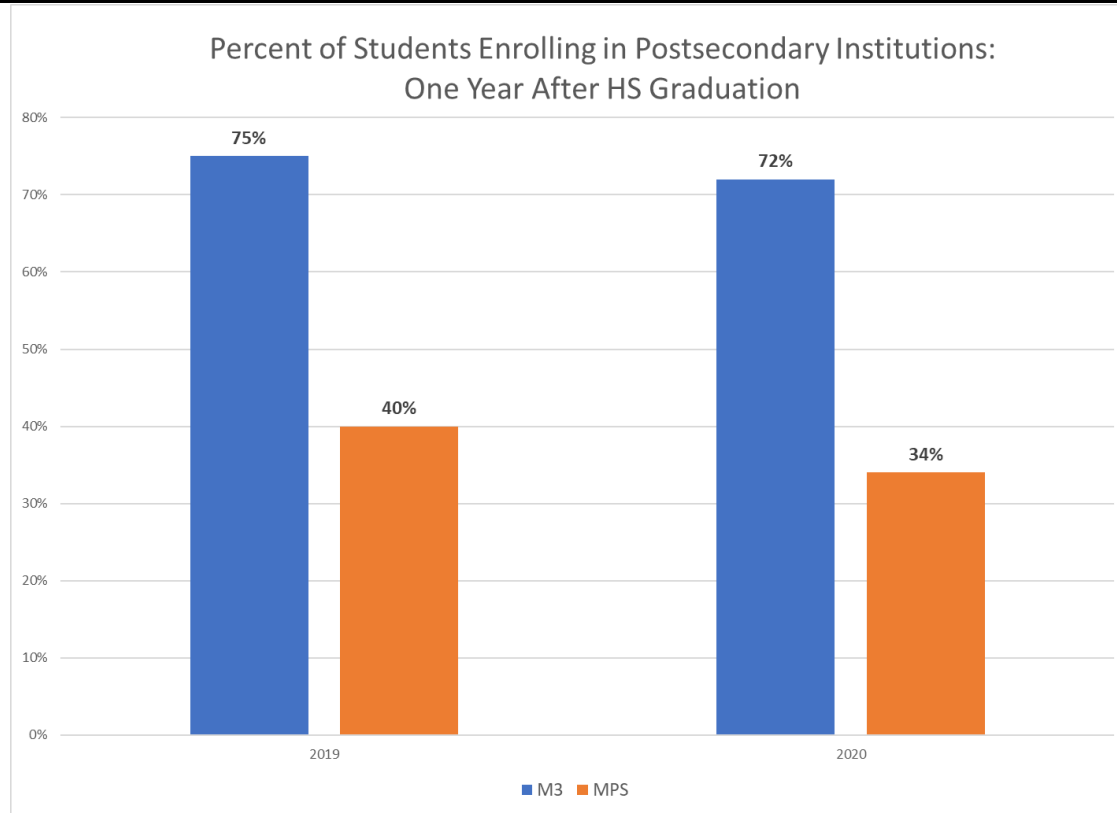
- Data pull
- Direct mailing to families
- Connect to school counselors
- Information sessions
- Application
- Holistic review of students by committee



M³ College Connections: Growth



M³ College Connections: Postsecondary Enrollment



M³ College Connections: Next Steps

- Intentional outreach to underserved populations
- Building high school teachers' capacity
- Developing multiple course options
- Adding summer coursework
- Expanding the pathways
- Increasing enrollment



Thank you.



Keith P. Posley, Ed.D., *Superintendent*