

Family & Community Engagement Report

March 12, 2019



MILWAUKEE
PUBLIC SCHOOLS

Presenters:

Kellie J. Sigh, Director of Strategic Partnerships and Customer Service
Darry Hall, Family and Community Engagement Specialist
Kevin Curley, Family & Community Engagement Associate

Dr. Keith P. Posley, Superintendent of Schools

FIVE PRIORITIES FOR SUCCESS

Improve District and School Culture

Ensure Fiscal Responsibility and Transparency



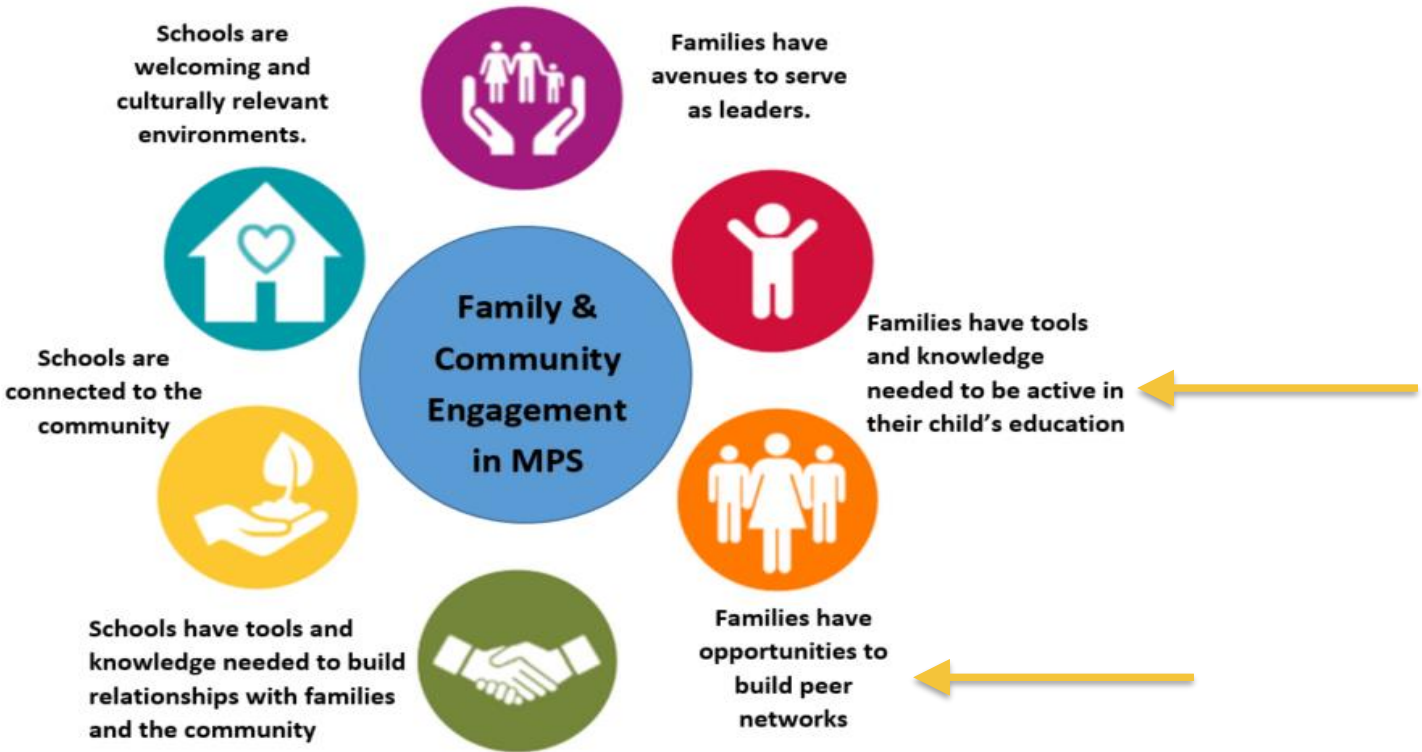
Increase Academic Achievement and Accountability

Develop Our Staff

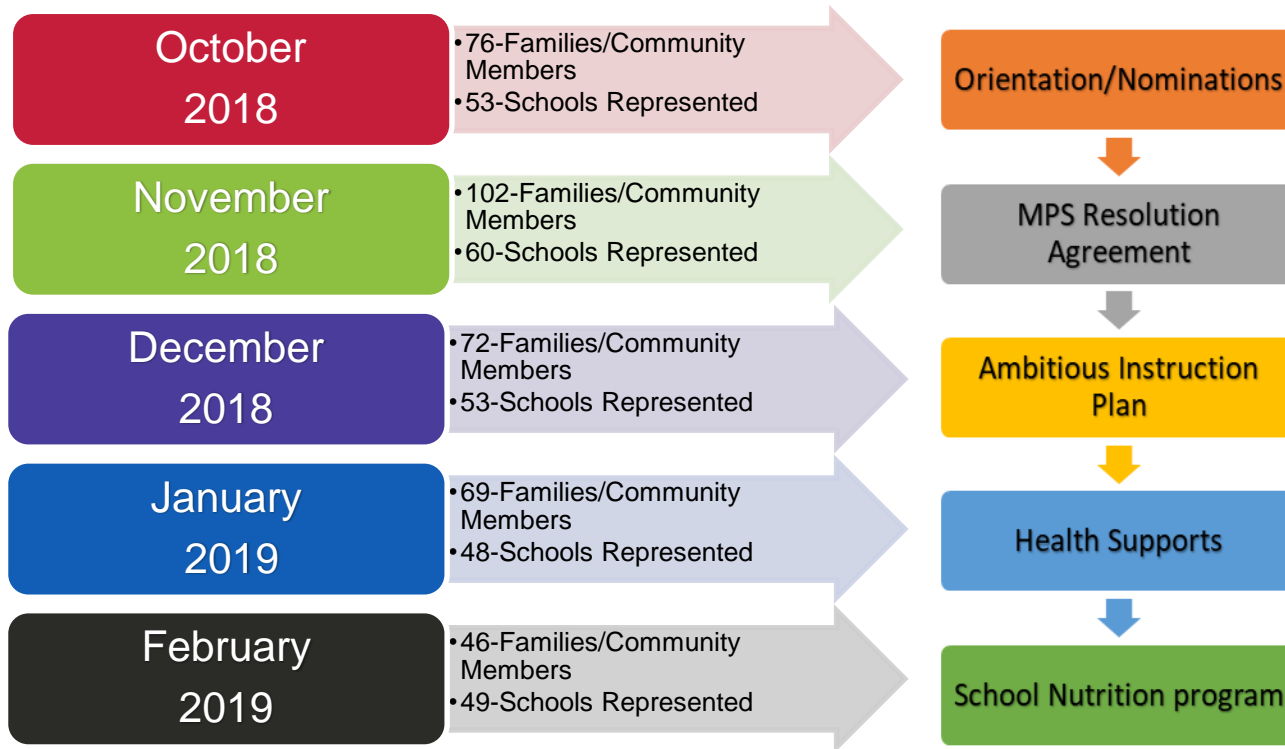
Strengthen Communication and Collaboration



MPS FAMILY & COMMUNITY ENGAGEMENT FRAMEWORK



DISTRICT ADVISORY COUNCIL NUMBERS



Nationally recognized
program

Eight Sessions

Funded through FAST
grant and WI Dept. of
Child and Families



- Auer Avenue Community School
- Brown Street Academy
- Engleburg Elementary School
- Hopkins-Lloyd Community School
- Keefe Avenue School

FAST PROGRAM GOALS

- Strengthen families and enhance positive parent-child relationships
- Support children's social and emotional well-being and success at school
- Connect parents, the school, and community to support children and families

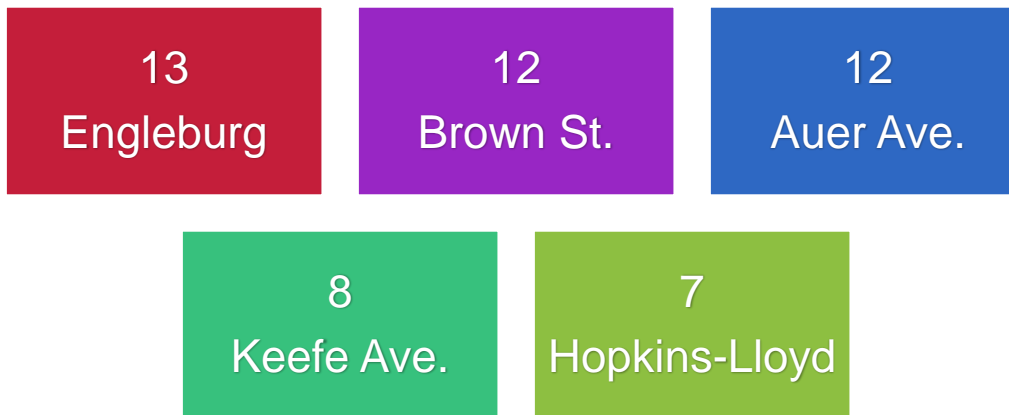


FAST PROGRAM OUTCOMES

Spring 2018: 26 families graduated

Fall 2018: 26 families graduated

Total Graduates= 52 families



Thank you.

Presenters:

Kellie Sigh, Director of Strategic Partnerships and Customer Service

Darryl Hall, Family & Community Engagement Specialist

Kevin Curley, Family & Community Engagement Associate



Dr. Keith P. Posley, Superintendent of Schools

