

# Family & Community Engagement Report

January 8, 2019



**MILWAUKEE**  
PUBLIC SCHOOLS

**Presenters:**

Kellie J. Sigh, Director of Strategic Partnerships and Customer Service  
Jorge Mayorga, Family & Community Engagement Associate

**Dr. Keith P. Posley, Superintendent of Schools**

# FIVE PRIORITIES FOR SUCCESS

**Improve District and School Culture**

**Ensure Fiscal Responsibility and Transparency**



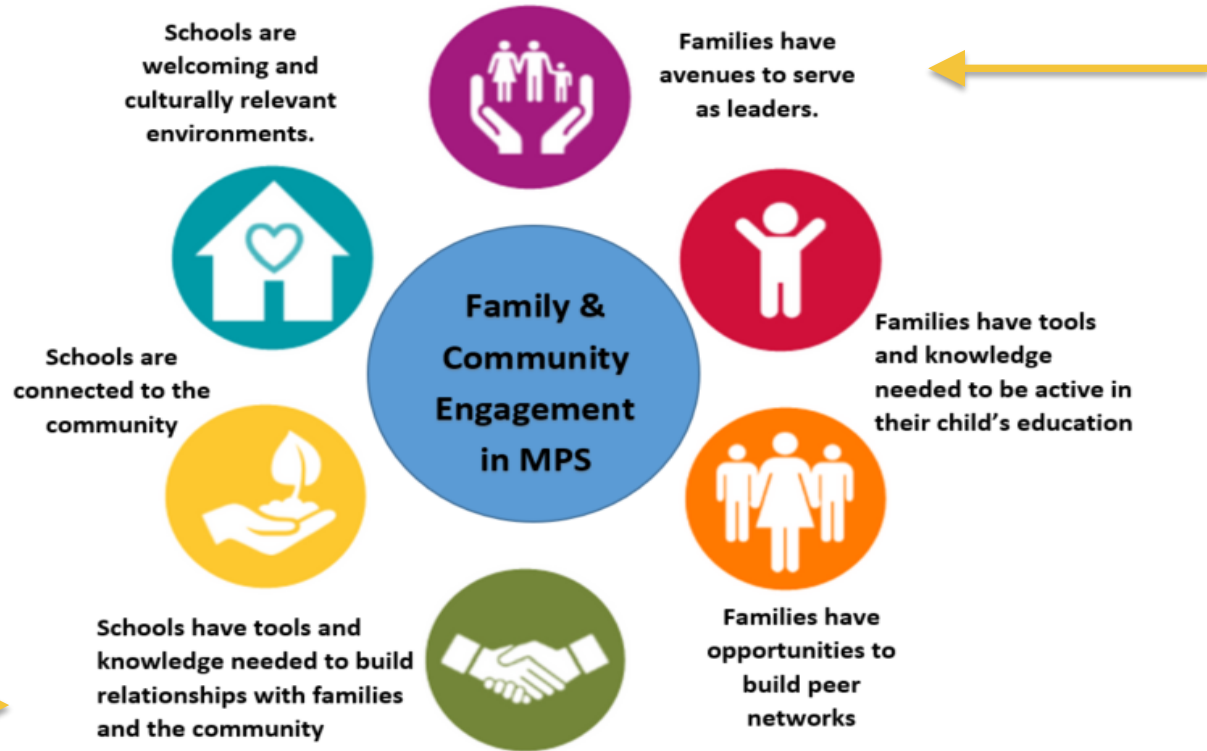
**Increase Academic Achievement and Accountability**

**Develop Our Staff**

**Strengthen Communication and Collaboration**



# MPS Family & Community Engagement Framework



# Family Interest Survey Updates

---

- 2018-19 Family Interest Survey
  - 11,126 completed (an increase of over 800 since previous year)
  - Specific school data shared with PCs and school leaders
  - Professional development held with PCs on how to use data



# School Improvement Plan (SIP)

---

- *New!* Empowered Families section:
  - Serves as the School Parent Compact (Title I requirement)
  - Convene a School Engagement Council
  - Create a Plan for Communication Between Families & Schools
  - Build Capacity of Families
  - Build Capacity of Staff



# Parent Coordinator Institute PD Topics

---

- Family literacy at home
- Planning attendance activities for families
- Using Family Interest Survey data to plan parent PD
- Mental health (Project Aware)
- Parent portal & new parent campus app
- Coordinating school volunteers (Vicnet)



# District Advisory Council (DAC) Topics

---

- MPS Resolution Agreement
- Ambitious Instruction Plan
- Mental Health Supports
- School Nutrition program



# Families and Schools Together (FAST) Grant

---

- Auer Avenue School
- Brown Street Academy
- Engleburg Elementary
- Hopkins-Lloyd Community School
- Keefe Avenue School
- Nationally recognized program
- Eight Sessions
- Funded through FAST grant and WI Dept. of Child and Families





# Thank you.

**Presenters:**

Kellie Sigh, Director of Strategic Partnerships and Customer Service  
Jorge Mayorga, Family & Community Engagement Associate



Keith P. Posley, Ed.D., *Superintendent*