

Stuart Elementary School – Regional Showcase

January 8, 2019



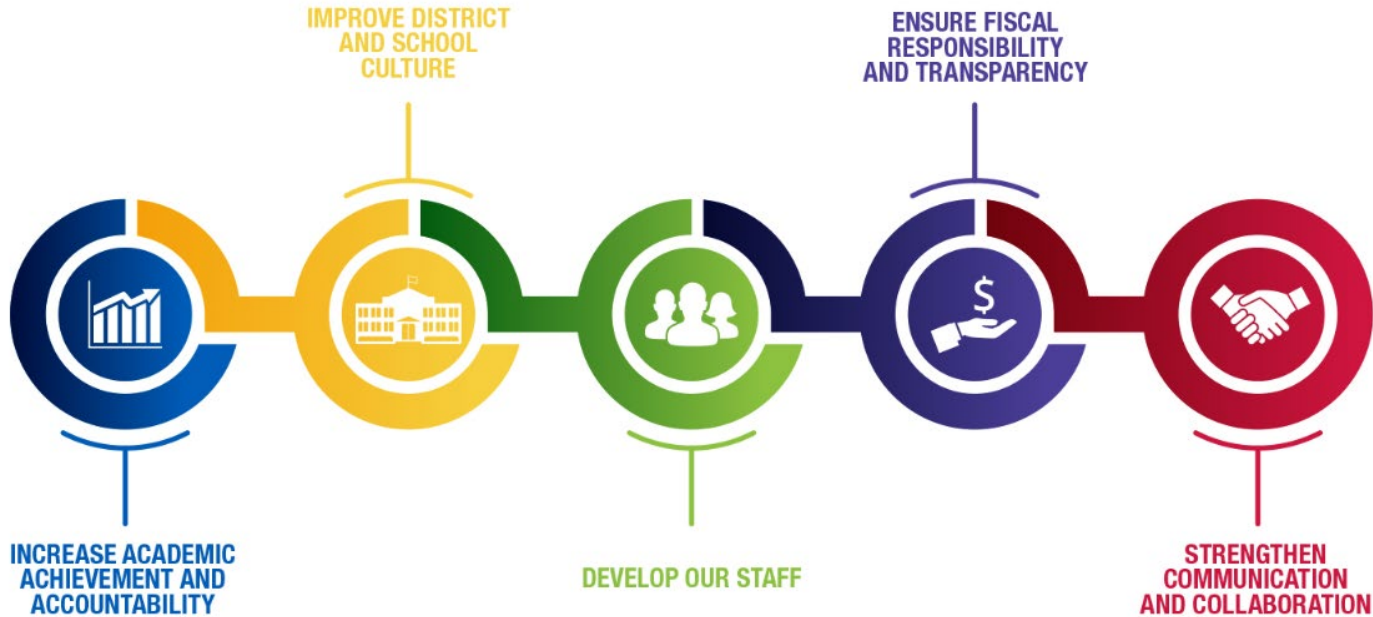
MILWAUKEE
PUBLIC SCHOOLS

Presenters:

Bridgette Hood-Leveston, Regional Superintendent
Nicole Jude, Principal, Stuart Elementary School

Dr. Keith P. Posley
Superintendent of Schools

5 Priorities for Success



Background



- Stuart is located on the far Northwest Side of Milwaukee. We identify ourselves as the **“Hidden Jewel in the Northwest.”**
- Stuart is a K-5th grade elementary school that serves a population of 325 students, 10.5% of our students are English Language Learners and 24.3% of the student population receives Special Education Services.
- Stuart is one of the three schools selected to expand the IB Program in the district.

Academic Progress



- Increase in State Report Card from 62.6% (2016-17) to 68.2% (2017-18), which moved us from **Meets Few Expectations** to **Meets Expectations (4.8% from Exceeds Expectations)**.
- The students closed the gap by 78.2% according to the State Report Card, which is higher than the state average of 69.6%.
- A pre-winter STAR snapshot indicates a decrease of students needing Tier 2 Intervention in reading and math by 16%.
- Through the SEE US Program, we have nominated 11 second and third grade students to receive Gifted & Talented support services.



School Improvement Focus

Problem of Practice: According to the STAR and Forward assessments, at least 33% of our 3rd –5th grade students scored just below the proficiency percentile (it was missed by 1-5 points). However, this same group of students made a 10% gain on the Forward assessment from the 2016-17 school year to the 2017-18 school year. As a learning team, we decided to target this group of students to provide additional support.

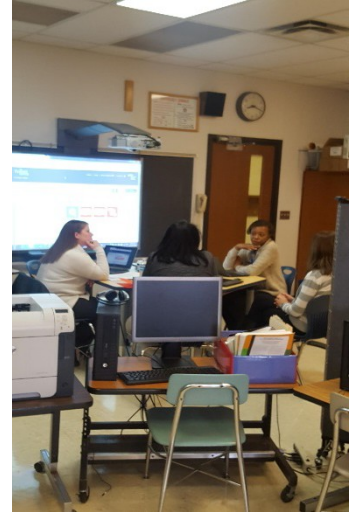
Teacher Support:

Bi-weekly collaborative grade level meetings with a focus on:

- Standards-based planning (using the Webb’s Depth of Knowledge)
- data chats
- developing authentic assessments
- instructional support

Student Support:

- Monthly data chats regarding academics and behavior with Tier 1 and Tier 2 students



School Climate Data

12/20/2018

Principal's Landing Page - Power BI

Absentee Rate

16 students chronically absent out of **272** students enrolled for over 45 days.

Attendance Rate

93.6%



Suspension Rate

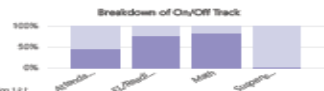
0.9%



Students On-Track

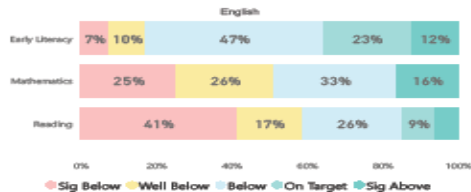


Use filters to compare the filtered students against school

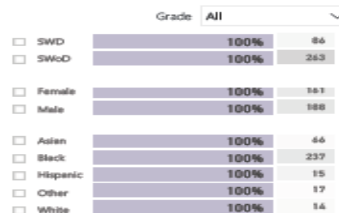


Currently Selected: STUART SCHOOL

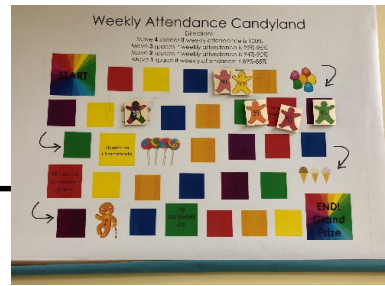
STAR



Student Demographics



Culture/Climate



To reinforce student attendance:

- Weekly and monthly classroom attendance awards
- School-wide Candyland attendance game facilitated by the PBIS committee
- Build relationships with families through regular communications including phone calls and home visits
- Individual student attendance awards during each trimester

To maintain an environment that is safe and conducive to learning:

- Bi-weekly student recognition for PBIS
- Student of the Month Recognition
 - Luncheons
 - Student of the Month Bulletin Board
 - Student Bio read during morning announcements
- PBIS Student Celebrations twice a year



Culture/Climate

Reduce Percentage of Student Suspensions:

- Restorative Justice Groups facilitated by school psychologist
- Relationship building between staff (including school administration), students and their families
- Young Hero Mentoring Program for 4th and 5th grade male students with challenging behaviors
- Extra curricular activities (basketball, African drumming, choir)

Aligning PBIS with the IB Program Philosophy:

- In preparation for the IB Program, the school community is working to incorporate the IB Learner Profile attributes into our school culture



We Are Stuart Proud

There are five key attributes of the IB Learner Profile that represents what makes us ***Stuart Proud***:

- **Thinkers** – We are teaching our students to become critical thinkers and to be creative in their approach to the learning process
- **Communicators** – We have established a culture of collaboration among staff, students, and parents to seek understanding, value each member's perspectives, analyze data, and develop new strategies to promote academic excellence
- **Caring** – We are relationship builders which is vital to building a strong school culture
- **Risk-takers** – Stepping out of our comfort zone and embarking on a new journey to embrace the IB Program Philosophy
- **Open-minded** – We are a diverse community who has developed an appreciation of various cultures and values personal histories represented in our school



Thank you!

