



Superintendent's Report – June

The Superintendent's Report is designed to provide the Milwaukee Board of School Directors and the MPS community with an update on current activities underway to support the district goals of academic achievement; student, family and community engagement; and effective and efficient operations as they are aligned to the district's eight strategic objectives:

- 

Close the GAP
- 

Re-envision Partnerships
- 

Educate the Whole Child
- 

Strengthen Communication Systems & Outreach Strategies
- 

Redefine the MPS Experience
- 

Develop Our Workforce
- 

Rethink High Schools
- 

Improve Organizational Processes

Meetings from late May through mid-June follow.

Panasonic conducted their monthly site visit. Their work included a half-day retreat with Dr. Jennifer Smith and members of her Curriculum & Instruction staff.

I was at the **ESSA Learning Community (ELLC)** meeting in New York. The objective of the meeting was to discuss what it means to lead for equity and how to leverage the use of effective partnerships in that effort; learn from what other states are doing in regard to using education leadership to support their overall ESSA planning and achievement of equity goals; and, be able to use this information in our current ESSA planning discussions.

I had my monthly meeting with my **Teacher Advisory Group (TAG)**. This was an excellent opportunity to get feedback from teachers and identify ways to better support our students. I plan to continue them next school year.

 We had our **United Way** Cabinet kick-off. Work is well underway for next year's campaign!

Chancellor Mark Mone, President Vicki Martin and I did a taping at WUWM on our **M³** partnership efforts. We also planned for the **M³** presentation to the UW Board of Regents which took place this month. They had many great questions and were truly impressed with this partnership. The three of us also met with Joann Anton from the Herb Kohl Foundation to discuss the **M³** initiatives.

 John Daniels, representatives from **Cardinal Stritch University**, members of my team, and I met to discuss a Cardinal Stritch University and MKE Fellows partnership.

I met with members of the **Milwaukee Police Department** and TABS to strategize how to best utilize these entities in our schools.

Eve Hall, new president of **Milwaukee Urban League**, and I met to discuss partnership opportunities.

I met with the **Milwaukee High School of the Arts** Boys 2 Men group. The group discussed ways to improve the lives of young Black males.

Julia Taylor, her team from **GMC**, and I met to discuss next year's TeachtownMKE program and the "Key to the City" for new educators.

Director Harris and I met with Fred Royal, President of **NAACP** to discuss ways the NAACP can support our district.

The **Aspiring Leaders Pathway** cohort held their completion program. This cohort is designed to support our schools by developing administrators who are dedicated to our students, district and city.

I attended **MPS C.A.R.E.S.**, Wellness Wednesdays at Madison High School. This is a community outreach and programming initiative with multiple components aimed at improving community conditions for our children and young adults. In addition, MPS C.A.R.E.S. held their Youth Crew March at Wick Field.



The **MTEA** has been working on school safety issues. We met with the MTEA members to discuss opportunities that they feel will enhance school safety.

I spoke with State Representative Mary Felzkowski to talk to me about the bill that was passed that puts funds into the BOSS initiative in Milwaukee. The bill was passed with the caveat that Milwaukee must do matching funds.

I met with Senator LaTonya Johnson to discuss the **Milwaukee Community Schools** partnership.

I attended the fifth annual Peace Summit at **Lloyd Barbee Montessori School**.

Wisconsin Foodie was at **Washington High School's** culinary arts classes. We taped some great footage that we will use for our culinary arts promotion. The students had a great time and learned a lot about local and fresh foods.

I met with Tim Sheehy and Paul Sweeney from **MMAC** to talk about our "Adopt-a-School" program, ONE Milwaukee, and other successful initiatives, which are business, community and public school partnerships.

Peter Feigin hosted the Heart Walk meeting. The **Heart Walk/Run** is on September 17 at Veterans Park.

We held the last regular **Principal Leadership Institute** for the year. We bid farewell to several school leaders. We also had our presentation of the 2017 Strategic Priority Awards recognizing all of our schools' accomplishments during the 2016–17 school year.

Senator Lena Taylor and I had a phone conference to discuss the MPS school nurse program as well as a pregnancy prevention program.



The **Year Of The Arts (YOTA)** kick off was held at North Division. I am super excited as I anticipate great outcomes to result from the goals, activities and events planned for YOTA. We have been awarded a \$700,000 grant from Cargill to support this work and we engaged with UWM and Cardinal Stritch to strengthen the teacher pipeline and train up the teachers we have around best practices for arts education. This is truly a great time for MPS, as we have set the bar high, but I am confident with our commitment to providing equitable arts experiences for students, along with the outstanding support we have in

the arts community we will be successful!



I attended a meeting for **Milwaukee Partnership Schools** with the Morgridges. They are extremely impressed with the great progress made over the initial two years of collaboration, as signaled by the positive momentum with the key academic and behavior indicators.

Danae Davis, Director of the **Greater Milwaukee Foundation** and I met for our standing meeting to discuss our partnership and ways to develop it even the more.

Awards/Recognition/Announcements

2016–17 STEM Report



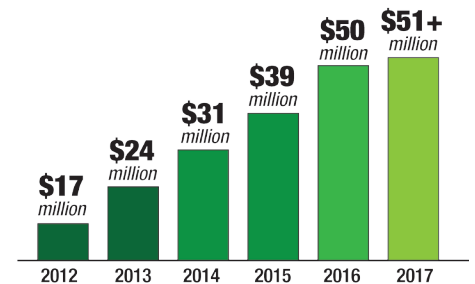
There were many things to celebrate in the area of STEM education in MPS during the 2016–17 school year. Some highlights include the following:

- ▶ **STEM Fair** – The 10th Annual MPS STEM Fair (formerly known as the MPS Science Fair) took place on April 21, 2017 at the Milwaukee County Zoo. Forty-nine schools were represented by 446 students the day of the fair, and 289 projects in science and engineering were judged and scored.
- ▶ **IFAIR** – IFAIR took place at Washington High School and Harley Davidson. The major goal of the event is to stimulate interest in and excitement about IT and Engineering career choices. Over 30 companies, and 10 colleges and universities joined us this year.
- ▶ **Engineering the Future** – Engineering the Future exposed 9–12th grade students to professionals and exciting career options from various construction trades and engineering disciplines. MPS partnered with Prism Technical, Greater Milwaukee Foundation, Milwaukee Bucks, Mortenson and MSOE.
- ▶ **STEM Events** – Boy Day and Girl Day in Engineering, during the National Engineering Week, Prism Technical and several sponsors hosted both events. The goal is to expose middle school students to dynamic engineers and exciting career options from various engineering disciplines. These interactions will show students that they can pursue career paths in science and engineering no matter their circumstance, background, gender or heritage.
- ▶ **STEM Grants** – There were a number of grants awarded to support STEM education in MPS including a \$75,000 grant from Rockwell Automation to support Project Lead the Way (PLTW) and ST Math, a game-based instructional software at Rogers Street Academy and La Escuela Vieau. Also, a significant portion of the Carl Perkins grant (\$1.75 million) goes toward advancing STEM education in MPS.



Scholarships for Class of 2017 exceed \$62 million

Milwaukee Public Schools announced another record-breaking number of scholarship dollars offered to students. The Class of 2017 received an eye-popping total of \$62,742,516* in scholarships, shattering last year's record of \$51 million. This is the fifth straight year, dating back to 2012 (\$17 million total) that scholarship offers have increased. School counselors are a critical source of support in helping students acquire scholarships. School counseling has strategically implemented new strategies to support students. This year saw the introduction of the Cash for College Campaign coordinated by school counseling, focused on connecting students with scholarships.



The Class of 2017 is the first senior class to participate in GEAR UP (Gaining Early Awareness and Readiness for Undergraduate Programs). The TEAM GEAR UP grant, a seven-year federal grant worth more than \$28 million (including match dollars), is at eight high schools: Audubon, Bay View, Bradley Tech, Hamilton, Madison, Marshall, MHSA and Vincent. An important component of the TEAM GEAR UP grant



is the opportunity for MPS to create and solidify relationships with key business and community partners as well as to establish a pipeline to Wisconsin colleges and universities. Through TEAM GEAR UP, MPS has built strong partnerships with Alverno College, Cardinal Stritch University, Marquette University, Milwaukee Area Technical College, University of Wisconsin-Madison, University of Wisconsin-Milwaukee, and the University of Wisconsin-Oshkosh.

*Number will continue to rise as schools continue to report.

Record Number of MPS Schools Awarded for Behavior and Academic Excellence

Milwaukee Public Schools has set another record for the number of schools awarded by an independent, statewide organization for promoting positive behaviors: 107 schools, up from 100 last year and 79 the year before, received recognition. MPS also broke records for the number of schools recognized in academics: 90 schools were awarded for reading, up from 62 last year and 39 the year before; and 65 schools were awarded in math, up from 52 last year and 22 the year before.

Schools throughout the state of Wisconsin were recognized at Bronze, Silver or Gold levels through Wisconsin RtI Center's rubric for recognition. Out of the 13 Wisconsin schools that received a Gold designation, eight are MPS schools.



The honors come from the Wisconsin RtI Center, a statewide organization that helps schools implement a research-based multi-tiered system of support. These frameworks include Response to Intervention (RtI) behavior - Positive Behavioral Interventions and Supports (PBIS) which focus on building strong school environments and providing supports to children.

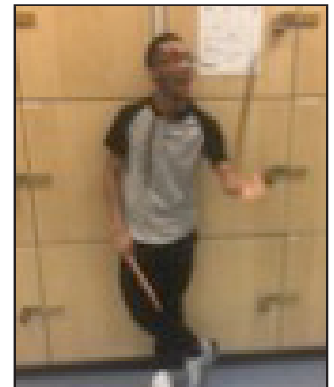
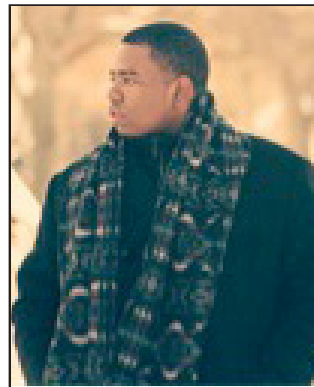
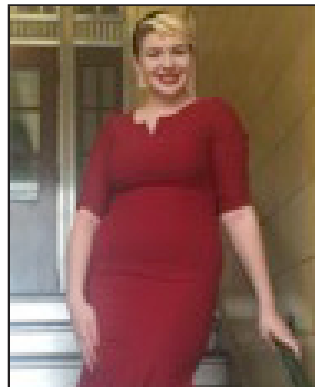
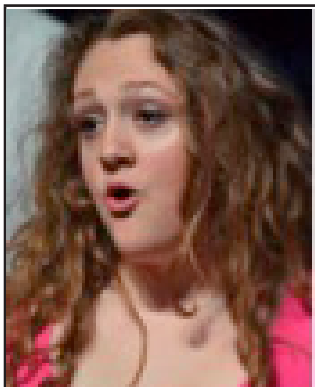
Over 100 MPS schools were recognized at Bronze, Silver or Gold levels. A complete list of school awards is below.

School	Award for Behavior/PBIS	Award for Reading	Award for Mathematics
Elm Creative Arts Elementary	Bronze Level: Behavior	Bronze Level: Reading	Bronze Level: Mathematics
Hartford Avenue Elementary	Bronze Level: Behavior	Bronze Level: Reading	Bronze Level: Mathematics
Keefe Avenue Elementary	Bronze Level: Behavior	Bronze Level: Reading	Bronze Level: Mathematics
King Junior Elementary	Bronze Level: Behavior	Bronze Level: Reading	Bronze Level: Mathematics
Manitoba Elementary	Bronze Level: Behavior	Bronze Level: Reading	Bronze Level: Mathematics
Meir School	Bronze Level: Behavior	Bronze Level: Reading	Bronze Level: Mathematics
Milw Spanish Immersion	Bronze Level: Behavior	Bronze Level: Reading	Bronze Level: Mathematics
Neeskara Elementary	Bronze Level: Behavior	Bronze Level: Reading	Bronze Level: Mathematics
Sherman Elementary	Bronze Level: Behavior	Bronze Level: Reading	Bronze Level: Mathematics
Victory Elementary	Bronze Level: Behavior	Bronze Level: Reading	Bronze Level: Mathematics
Westside Academy	Bronze Level: Behavior	Bronze Level: Reading	Bronze Level: Mathematics
Hamilton High	Bronze Level: Behavior	Bronze Level: Reading	Silver Level: Mathematics
Maple Tree Elementary	Bronze Level: Behavior	Bronze Level: Reading	
Riley Elementary	Bronze Level: Behavior	Bronze Level: Reading	
Starms Early Childhood	Bronze Level: Behavior	Bronze Level: Reading	
Lincoln Avenue Elementary	Bronze Level: Behavior	Gold Level: Reading	Gold Level: Mathematics
Barbee Elementary	Bronze Level: Behavior	Silver Level: Reading	Bronze Level: Mathematics
Cass Street Elementary	Bronze Level: Behavior	Silver Level: Reading	Bronze Level: Mathematics
Hampton Elementary	Bronze Level: Behavior	Silver Level: Reading	Bronze Level: Mathematics
Hawthorne Elementary	Bronze Level: Behavior	Silver Level: Reading	Bronze Level: Mathematics
Hopkins Lloyd Community School	Bronze Level: Behavior	Silver Level: Reading	Bronze Level: Mathematics
Howard Avenue Montessori School	Bronze Level: Behavior	Silver Level: Reading	Bronze Level: Mathematics
Roosevelt Middle	Bronze Level: Behavior	Silver Level: Reading	Bronze Level: Mathematics
Stuart Elementary	Bronze Level: Behavior	Silver Level: Reading	Bronze Level: Mathematics
Kluge Elementary	Bronze Level: Behavior	Silver Level: Reading	Silver Level: Mathematics
Bethune Academy	Bronze Level: Behavior		Bronze Level: Mathematics
River Trail Elementary	Bronze Level: Behavior		Bronze Level: Mathematics

School	Award for Behavior/PBIS	Award for Reading	Award for Mathematics
Starms Discovery	Bronze Level: Behavior		Bronze Level: Mathematics
Alliance School of Milwaukee	Bronze Level: Behavior		
Clemens Elementary	Bronze Level: Behavior		
Gaenslen Elementary	Bronze Level: Behavior		
Grantosa Drive Elementary	Bronze Level: Behavior		
Hayes Bilingual School	Bronze Level: Behavior		
King IB Mid (Rufus King Middle Years)	Bronze Level: Behavior		
Lancaster Elementary	Bronze Level: Behavior		
Madison Academic Campus	Bronze Level: Behavior		
Marshall High	Bronze Level: Behavior		
Milwaukee Environmental Science Academy	Bronze Level: Behavior		
Milwaukee School of Languages	Bronze Level: Behavior		
Mitchell Elementary	Bronze Level: Behavior		
Morgandale Elementary	Bronze Level: Behavior		
Morse Middle	Bronze Level: Behavior		
Riverside High	Bronze Level: Behavior		
St. Charles Youth & Family Services	Bronze Level: Behavior		
Washington High	Bronze Level: Behavior		
Zablocki Elementary	Bronze Level: Behavior		
Garland Elementary	Gold Level: Behavior	Gold Level: Reading	Bronze Level: Mathematics
Greenfield Bilingual School	Gold Level: Behavior	Gold Level: Reading	Bronze Level: Mathematics
Holmes Elementary	Gold Level: Behavior	Gold Level: Reading	Bronze Level: Mathematics
Maryland Ave. Montessori	Gold Level: Behavior	Gold Level: Reading	Bronze Level: Mathematics
Whittier Elementary	Gold Level: Behavior	Gold Level: Reading	Bronze Level: Mathematics
Academy of Accelerated Learning	Gold Level: Behavior	Gold Level: Reading	Gold Level: Mathematics
Forest Home Elementary	Gold Level: Behavior	Gold Level: Reading	Gold Level: Mathematics
ALBA School	Silver Level: Behavior	Bronze Level: Reading	Bronze Level: Mathematics
Allen-Field Elementary	Silver Level: Behavior	Bronze Level: Reading	Bronze Level: Mathematics
ASSATA	Silver Level: Behavior	Bronze Level: Reading	Bronze Level: Mathematics
Audubon High	Silver Level: Behavior	Bronze Level: Reading	Bronze Level: Mathematics
Brown Street Academy	Silver Level: Behavior	Bronze Level: Reading	Bronze Level: Mathematics
Bruce Elementary	Silver Level: Behavior	Bronze Level: Reading	Bronze Level: Mathematics
Clarke Street Elementary	Silver Level: Behavior	Bronze Level: Reading	Bronze Level: Mathematics
Curtin Elementary	Silver Level: Behavior	Bronze Level: Reading	Bronze Level: Mathematics
Engleburg Elementary	Silver Level: Behavior	Bronze Level: Reading	Bronze Level: Mathematics
Hi-Mount Elementary	Silver Level: Behavior	Bronze Level: Reading	Bronze Level: Mathematics
IDEAL School	Silver Level: Behavior	Bronze Level: Reading	Bronze Level: Mathematics
Jackson Elementary	Silver Level: Behavior	Bronze Level: Reading	Bronze Level: Mathematics
Kagel Elementary	Silver Level: Behavior	Bronze Level: Reading	Bronze Level: Mathematics

School	Award for Behavior/PBIS	Award for Reading	Award for Mathematics
Kilbourn Elementary	Silver Level: Behavior	Bronze Level: Reading	Bronze Level: Mathematics
Milwaukee French Immersion	Silver Level: Behavior	Bronze Level: Reading	Bronze Level: Mathematics
Thoreau Elementary	Silver Level: Behavior	Bronze Level: Reading	Bronze Level: Mathematics
Carson Academy	Silver Level: Behavior	Bronze Level: Reading	Silver Level: Mathematics
Congress Elementary	Silver Level: Behavior	Bronze Level: Reading	
Reagan High	Silver Level: Behavior	Bronze Level: Reading	
Bryant Elementary	Silver Level: Behavior	Silver Level: Reading	Bronze Level: Mathematics
Burbank Elementary	Silver Level: Behavior	Silver Level: Reading	Bronze Level: Mathematics
Burdick Elementary	Silver Level: Behavior	Silver Level: Reading	Bronze Level: Mathematics
Clement Avenue Elementary	Silver Level: Behavior	Silver Level: Reading	Bronze Level: Mathematics
Cooper Elementary	Silver Level: Behavior	Silver Level: Reading	Bronze Level: Mathematics
Fairview Elementary	Silver Level: Behavior	Silver Level: Reading	Bronze Level: Mathematics
Fernwood Montessori	Silver Level: Behavior	Silver Level: Reading	Bronze Level: Mathematics
Goodrich Elementary	Silver Level: Behavior	Silver Level: Reading	Bronze Level: Mathematics
Grant Elementary	Silver Level: Behavior	Silver Level: Reading	Bronze Level: Mathematics
Humboldt Park Elementary	Silver Level: Behavior	Silver Level: Reading	Bronze Level: Mathematics
Lincoln Middle	Silver Level: Behavior	Silver Level: Reading	Bronze Level: Mathematics
Longfellow Elementary	Silver Level: Behavior	Silver Level: Reading	Bronze Level: Mathematics
Lowell Elementary	Silver Level: Behavior	Silver Level: Reading	Bronze Level: Mathematics
MacDowell Montessori School	Silver Level: Behavior	Silver Level: Reading	Bronze Level: Mathematics
Milwaukee Parkside School	Silver Level: Behavior	Silver Level: Reading	Bronze Level: Mathematics
Ninety-Fifth Street Elementary	Silver Level: Behavior	Silver Level: Reading	Bronze Level: Mathematics
Pratt Elementary	Silver Level: Behavior	Silver Level: Reading	Bronze Level: Mathematics
Rogers Street Academy	Silver Level: Behavior	Silver Level: Reading	Bronze Level: Mathematics
Siefert Elementary	Silver Level: Behavior	Silver Level: Reading	Bronze Level: Mathematics
Thurston Woods Elementary	Silver Level: Behavior	Silver Level: Reading	Bronze Level: Mathematics
Townsend Street Elementary	Silver Level: Behavior	Silver Level: Reading	Bronze Level: Mathematics
Trowbridge Street Elementary	Silver Level: Behavior	Silver Level: Reading	Bronze Level: Mathematics
Vieau Elementary	Silver Level: Behavior	Silver Level: Reading	Bronze Level: Mathematics
Whitman Elementary	Silver Level: Behavior	Silver Level: Reading	Bronze Level: Mathematics
Hawley Environmental School	Silver Level: Behavior	Silver Level: Reading	
Wedgewood Park	Silver Level: Behavior	Silver Level: Reading	
Emerson Elementary	Silver Level: Behavior		Bronze Level: Mathematics
Parkview Elementary	Silver Level: Behavior		Bronze Level: Mathematics
Transition High	Silver Level: Behavior		Bronze Level: Mathematics
Auer Avenue Elementary	Silver Level: Behavior		
La Causa Charter School	Silver Level: Behavior		
North Division High	Silver Level: Behavior		
NOVA Middle-High	Silver Level: Behavior		
Pierce Elementary	Silver Level: Behavior		

School	Award for Behavior/PBIS	Award for Reading	Award for Mathematics
Project STAY	Silver Level: Behavior		
Bay View High		Bronze Level: Reading	Bronze Level: Mathematics
BEAM		Bronze Level: Reading	Bronze Level: Mathematics
Craig Montessori School		Bronze Level: Reading	Bronze Level: Mathematics
King International (Rufus King High)		Bronze Level: Reading	Bronze Level: Mathematics
LaFollette Elementary		Bronze Level: Reading	Bronze Level: Mathematics
Milwaukee German Immersion		Bronze Level: Reading	Bronze Level: Mathematics
New School for Community Service		Bronze Level: Reading	Bronze Level: Mathematics
NOVA Tech		Bronze Level: Reading	Bronze Level: Mathematics
Franklin Elementary		Bronze Level: Reading	Silver Level: Mathematics
Eighty-First Street Elementary		Bronze Level: Reading	
Doerfler Elementary		Silver Level: Reading	Bronze Level: Mathematics
Milwaukee High School of the Arts		Silver Level: Reading	Bronze Level: Mathematics
Honey Creek Elementary		Silver Level: Reading	Silver Level: Mathematics
Alcott Elementary			Bronze Level: Mathematics
Milwaukee Academy of Chinese Language			Bronze Level: Mathematics
Southeastern Middle			Bronze Level: Mathematics



Four MPS student musicians earn top honors at State Solo & Ensemble competition

Competing in Solo & Ensemble music festivals is the highlight of the school year for many music students. Competitors who give an exceptional performance at the district level advance to the state competition, where they push themselves to excel in the hope of earning first-place recognitions. This year, four MPS student musicians earned not only first-place awards, but were selected as Exemplary Soloists, an honor given to only 383 students this year.

Receiving this high level of recognition were **Maura Horgan** of Riverside University High School for her Broadway Vocal Solo; **Robert Martin** of Milwaukee High School of the Arts for his Baritone Vocal Solo; **Andrew Nash** of Rufus King International High School for his Parade Drum Solo; and **Natalija Walker** from Reagan High School for a Soprano Vocal Solo.

Solo & Ensemble competitions are sponsored by the Wisconsin School Music Association and draw approximately 100,000 entries each year. Approximately 1,000 entries from MPS schools performed at the district level this year. A total of 8,129 entries performed at the state competition.

Events/Programs

MPS offers arts, theater and music for students through Summer Academy along with Arts @ Large who will bring art activities to six schools: **Gaenslen, Kluge, Longfellow, Sherman, King Jr.,** and **Lancaster**. By creating art, students will engage in science and math activities that will strengthen literacy and other classroom skills.



The Milwaukee Repertory Theater will blend theater and stage skills with classroom subjects to build confidence, literacy, and creativity that can directly impact success in school. Programs will be hosted in eight MPS schools.

Seven schools will offer music programs through the Wisconsin Conservatory of Music. A variety of age levels will explore vocal and instrumental music forms and discover new styles and techniques.

