

53206 Promise Partnership Schools

June 9, 2022



MILWAUKEE
PUBLIC SCHOOLS

Presenters:

Maurice E. Turner, Instructional Leadership Director, High School Region

Dr. Carletta Noland, Regional Superintendent, Central Region

Janel Hawkins, Senior Director, City-Wide Region

Dr. Keith P. Posley, *Superintendent*

5 Priorities for Success



53206 Highlights

- Network parent coordinators have worked with family community engagement specialists to develop a standard of care for 53206 schools
- Each School has a College and Career focus branding (Flags/Banners-HS/College graduation years identified for each classroom)
- Collaboration with Human Resources Recruitment and Retention Plan for Promise Partnership Schools
- 53206 Promise Partnership School Coordinator
- Expansion of active community/business partnerships
- Showcased 53206 schools “Our Lights are On” Open House and Recruitment



Our Lights are On!



53206 Progress Monitoring System



Continuous School Improvement Progress Monitoring

Principals meet with Executive Leadership Team to review the progress of their school improvement efforts related to the 53206 Promise Partnership.

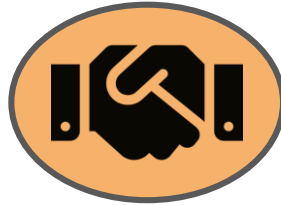
Three times per year



Continuous School Improvement Progress Monitoring

Executive Team meets with Principal Leadership Team for planning, revisions, additions and progress checks of 53206 Promise Partnership.

Monthly



53206 Advisory Council Progress Checks

Executive Team meets with Advisory Council to share progress and to seek input and support to carry out actions of 53206 Promise Partnership.

Quarterly



Superintendent and Cabinet 53206 Promise Partnership Review

Executive Team meets with Superintendent and Cabinet to share progress of goals related to the 53206 Promise Partnership.

Quarterly



Board of School Directors 53206 Promise Partnership Review

Executive Team reports to Student Achievement and School Innovation Committee to share progress of the 53206 Promise Partnership.

Three times per year

2022-23 Promise Partnership Scorecard

Performance Measures

Increase the number of students who score proficient in English Arts on Wisconsin Forward

Increase the number of students who score proficient in English Arts on Wisconsin Forward

Increase the number of students who score on target or above on STAR Reading

Increase the number of students who score on target or above on STAR Early Literacy

Increase the number of students on target or above on STAR Mathematics

Increase the number of students who score proficient on ACT

Increase the daily attendance rate

Increase proportionality in the percentage of suspensions and behavior referrals for Black male students with an IEP.

Decrease the number of incident referrals

Decrease the number of out of school suspensions



2022-23 Promise Partnership Scorecard

Performance Measures
Increase the % of certified vacancies filled by the first day of school
Increase the % of teachers retained after two (2) years of employment
Increase the number of schools with active District Advisory Council representatives
Increase the number of “active” community business partners
Improve overall student, staff and family perception data in 53206 schools (ESCC Survey)
Increase the number of schools with college partnerships
Increase the number of 5th, 8th & 12th grade students who select a middle, high school, and/or college by National Signing Day
Increase the number of students in grades 3, 5 and 7 who complete a career plan
Increase the number of graduating seniors that complete an exit survey
Increase the use of Xello school-wide.



School Spotlight: MPS Success Center

Our Guiding Values:

- We value the knowledge and wisdom of families and communities.
- We provide our students and schools with a high level of support.
- We hold all participants, including ourselves, accountable for our relationships with one another.
- We encourage perseverance through conflicts to achieve the social and emotional growth that is a natural outcome of any struggle.



Success Center students are forever part of our family!



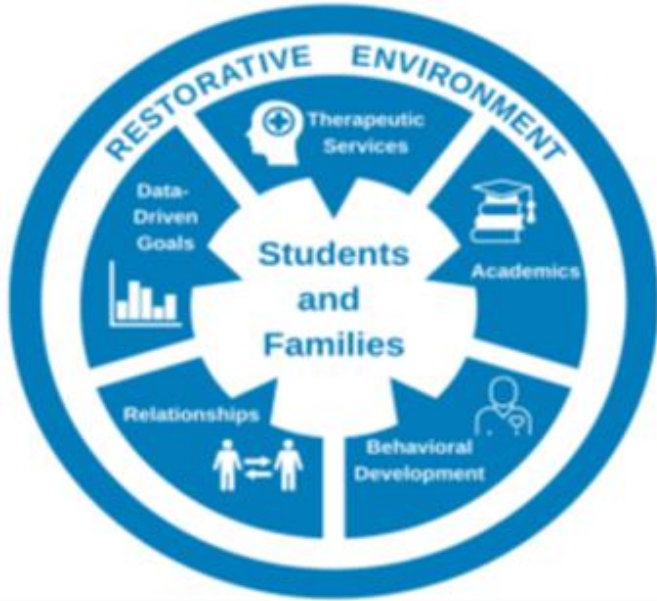
About the Success Center

Success Center serves students in grades 4 through 12 and partners with families and schools to prioritize the social and emotional health of students and equip them to better navigate school in collaboration with teachers and families.

Success Center is built upon the belief in restorative philosophy and strives to cultivate, maintain, and repair trusting relationships as a prerequisite for social and emotional growth.



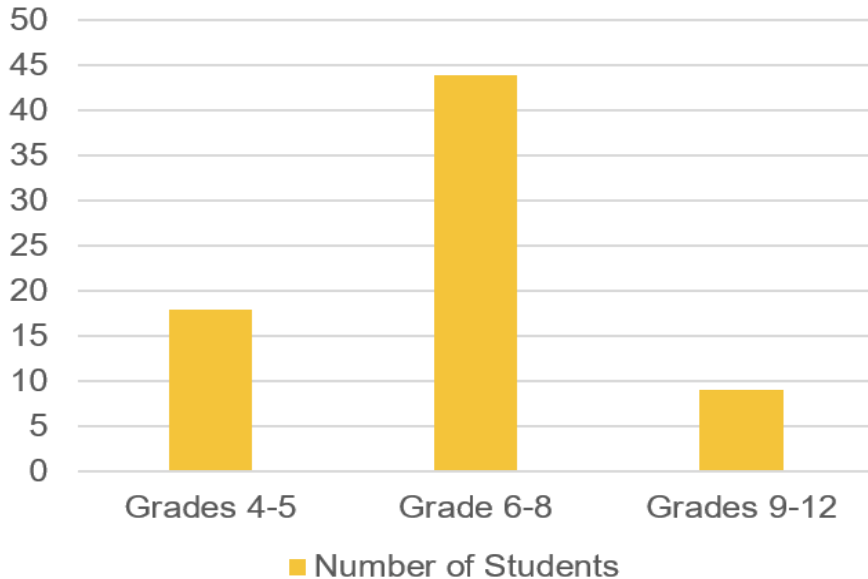
Success Center Support



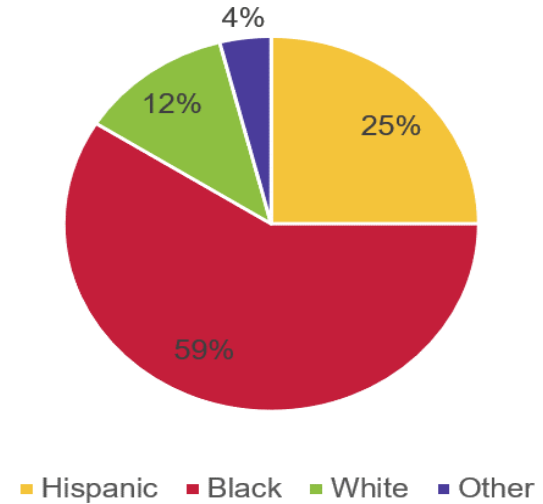
- Referral Process
- Programming
- Transition Supports

Success Center: Students Served

Grade Levels Served

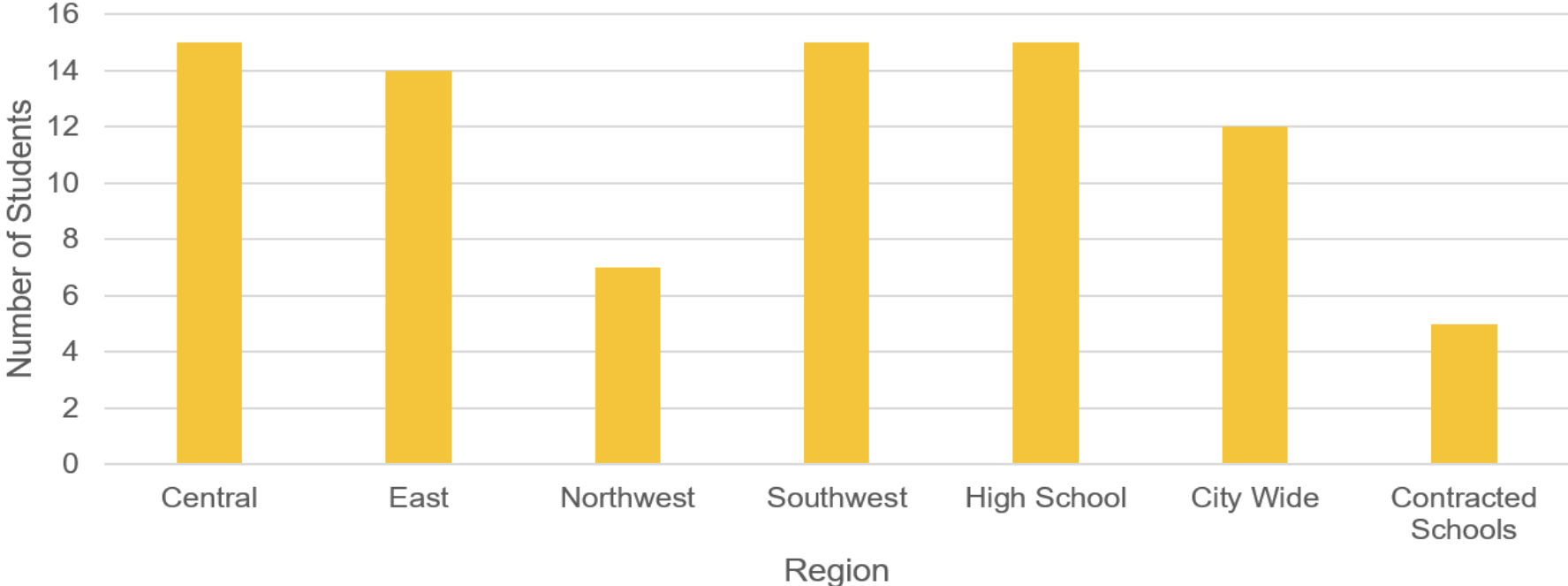


Demographics



Students Served at Success Center

Continued



Thank you.

Presenters:

Maurice E. Turner, Instructional Leadership Director

Dr. Carletta Noland, Regional Superintendent Central Region

Janel Hawkins, Senior Director, City-Wide Region



Dr. Keith P. Posley, *Superintendent*

