

Family & Community Engagement Report

August 16, 2018



Presenters:

Danielle Costello, Family & Community Engagement Specialist

LaNelle Ramey, Director of Black & Latino Male Achievement

Dustine Walker, Teacher, Mitchell Elementary

Keith P. Posley, Ed.D., *Interim Superintendent*

MILWAUKEE
PUBLIC SCHOOLS

FIVE PRIORITIES FOR SUCCESS

Improve District and School Culture

Ensure Fiscal Responsibility and Transparency



Increase Academic Achievement and Accountability

Develop Our Staff

Strengthen Communication and Collaboration



Flamboyant Foundation



Who : Flamboyant Foundation is a private, family foundation focused on improving educational outcomes for children in Pre-K-12 public schools across the country with offices and a focus in Washington, D.C. and Puerto Rico.

Flamboyan's Approach

**Employ a
Learning Stance**



**Influence
Innovation**



**Co-Construct
Solutions**





The strongest, most consistent predictor of family engagement are the specific school and teacher practices that encourage and guide a family's engagement.

Dr. Joyce Epstein
*Johns Hopkins
University*



What is the Fellowship

National Family Engagement Fellowship!

the
Atlanta
team

the
Dallas
team

the
Memphis
team

the
Milwaukee
team

the
Utah
team



- Fellowship Outcomes:
 - Write 1-3 year strategic plan for family engagement
 - Build or identify a vehicle for housing family engagement work
 - Cultivate a nation-wide network of practitioners

What is the Fellowship



Fellowship Content Strands



Effective
Family
Engage-
ment



Strategic
Planning

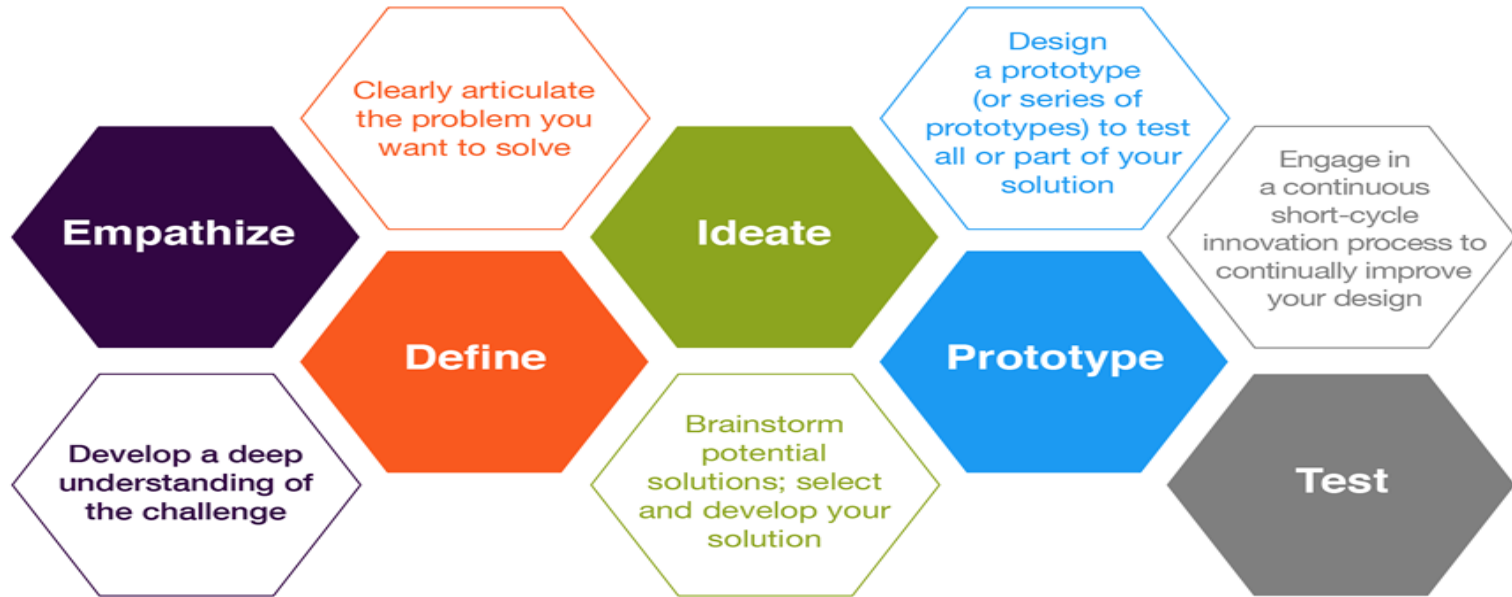


Race &
Equity



Building
Effective
Teams

Design Thinking Process



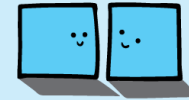
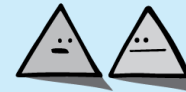
Why Landscape Assessment?

WE DO NOT SEE
THINGS THE WAY
THEY ARE, WE SEE
THEM AS WE ARE.

ANAIS NIN

Confirmation Bias

Have you ever noticed... that squares are always blue?



Oh, I know!
It's so weird!



Beatrice the Biologist

Landscape Assessment: Key Elements

Purpose: to deeply understand your context from all angles to inform the design of your intervention.

1. Local History & Current Context
2. Political Assessment
3. Empathy Interviews
4. Observations
5. Focus Groups
6. Asset Map

Milwaukee: Results

Key Insights:

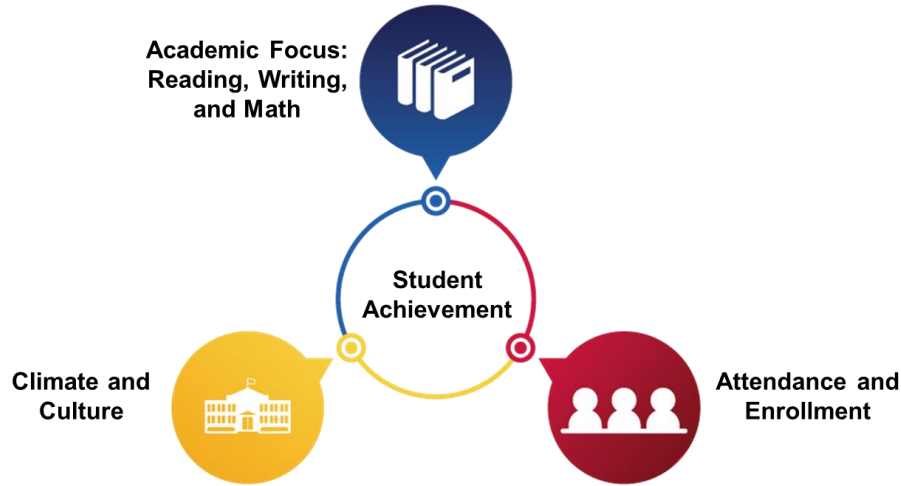
- Lack of Connection
- In-Group and Out-Group
- No Vision for Staff
- Missing Student Outcomes
- Involvement vs. Engagement

Needs Statement:

Schools need a way to building trusting partnerships with **ALL** families.



Next Steps: Pilot Phase



- Build on existing strategies
- Focus on areas of:
 - Role clarity
 - Bias & mindset
 - Family voice
- Look at whole school support

Thank you.

Milwaukee's Flamboyant Fellowship Team:

Danielle Costello, Family & Community Engagement Specialist,

Department of Strategic Partnerships & Customer Service

LaNelle Ramey, Director, Black and Latino Male Achievement

Dustine Walker, Teacher, Alexander Mitchell Elementary School

Leon Groce, Principal, Audubon Middle and High School

Shannon Reed, Director of Innovative Strategies for Boys & Men of Color, United Way



Keith P. Posley, Ed.D., *Interim Superintendent*

