



**MILWAUKEE  
PUBLIC SCHOOLS**

# East Region Showcase

**May 23, 2024**

**Dr. Keith P. Posley**  
*Superintendent*



**MILWAUKEE**  
PUBLIC SCHOOLS

**Cass Street**  
**&**  
**O.W. Holmes**

*Presenters*

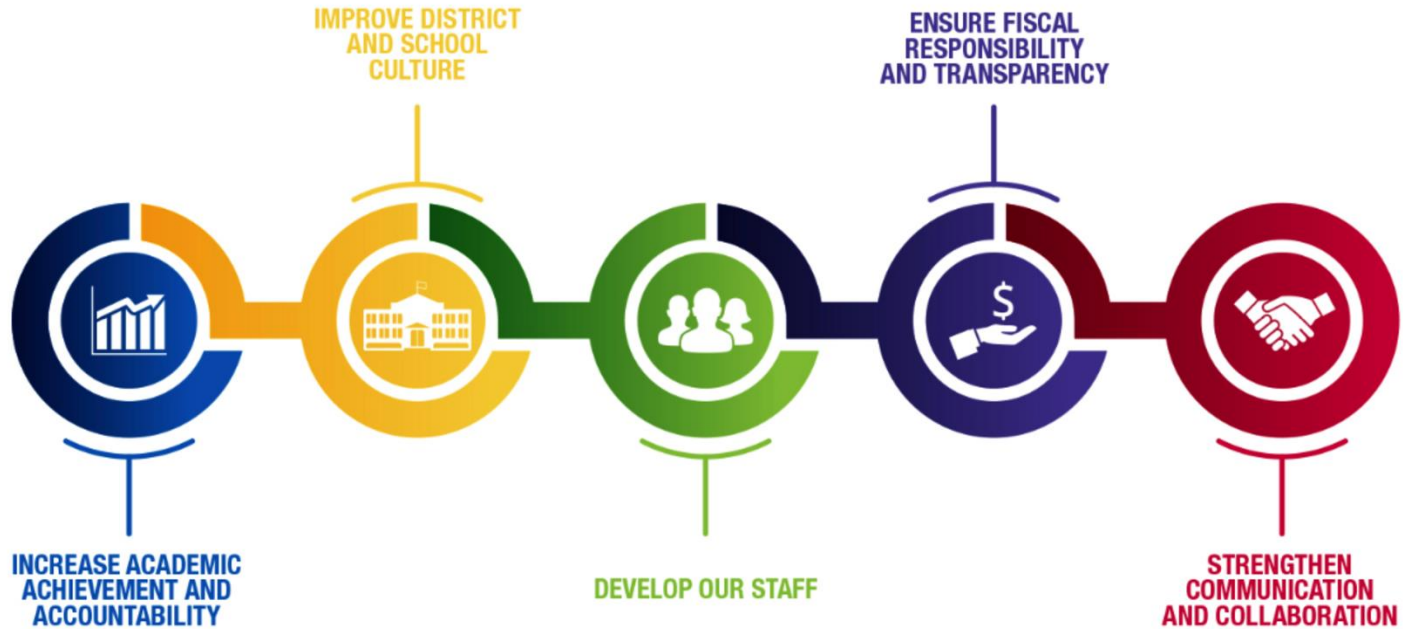
Miguel Sanchez,  
Regional Superintendent

Felice Beal,  
Instructional Leadership Director

Tyrone Nichols,  
Principal of Cass Street School

Tayotis Caldwell,  
Principal of O.W. Holmes School

# *Five Priorities for Success*

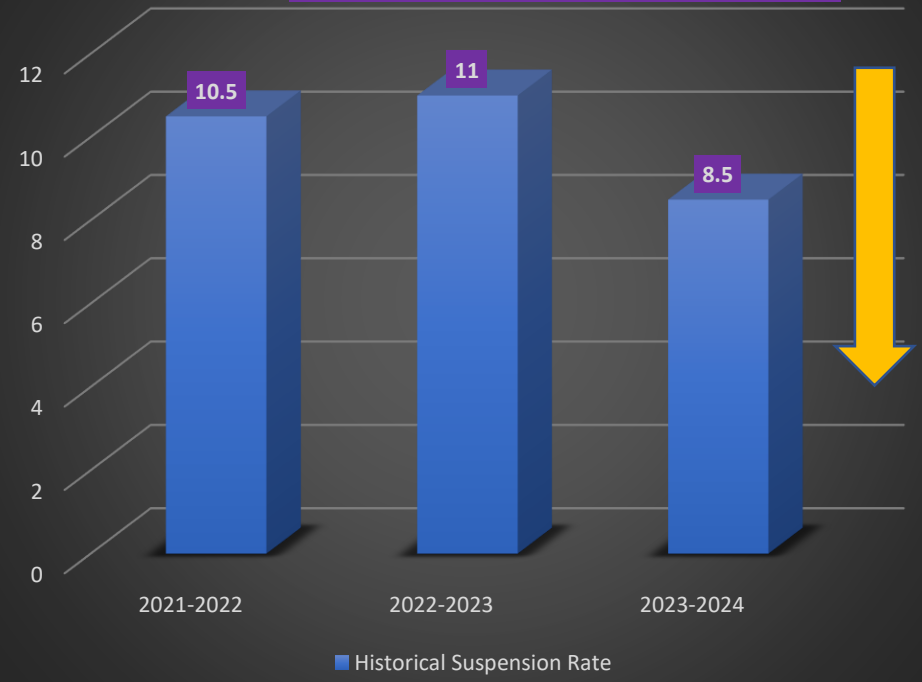


# East Region Growth and Opportunity

Historical Attendance

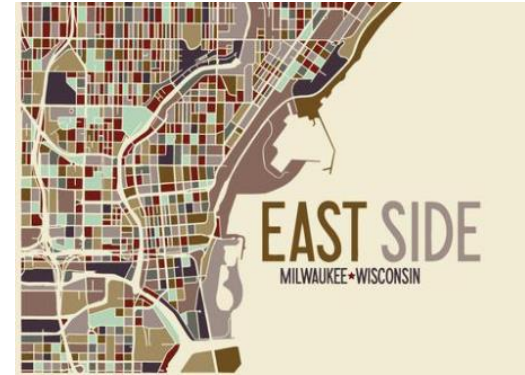


Historical Suspension Rate



# East Region Specialty Schools

SCHOOL SPECIALTY	EAST REGION SCHOOLS	
Montessori	Bay View Fernwood Maryland	
Dual Language/Immersion/Bilingual	Fratney Dr. King Jr. Lincoln Center of the Arts Middle Parkside Victory	
International Baccalaureate	King Middle	
Arts Integration	Elm Dr. King Jr. Lincoln Center of the Arts Middle Parkside Roosevelt Middle	
Community Schools	O.W. Holmes Dr. King Jr.	
Traditional Schools	Burdick Carver Clement Humboldt I.D.E.A.L Trowbridge	Gaenslen Garland Hartford M.A.C.L Riverwest



- 11,029 students Year To Date (YTD):
  - ✓ Increase of 304 students from 3<sup>rd</sup> Friday
  - ✓ 2, 293 Special Education
  - ✓ 7,423 Economically Disadvantaged
  - ✓ 1,388 English Language Learner

# Cass Street School

## Demographics

- K4 – 8<sup>th</sup> Grade Neighborhood School
- Enrollment: 303 with 344 served
- Enrollment increased by 23 students since 3<sup>rd</sup> Friday
- 17.5% SwD and 88.4% Economically Disadvantaged
- Race Breakdown:
  - 85.1% Black or African American
  - 7.3% Hispanic
  - 4.0% Multiple
  - 2.3% White
  - 1.3% Asian

## Data Spotlight

- 84.8% YTD Attendance Rate
- 9% Suspension Rate
- 6.9% Significantly Below in Early Literacy



# Cass Street School Points of Pride

- Dedicated Team of Educators
- Tutoring and Volunteers
- Increased Community Partnerships
- Increased Financial Donations
- Remodeled STEM and Project Lead the Way Labs
- Awarded the Schoolyard Redevelopment Grant
- Extensive List of Extracurricular Activities
- **MEETS EXPECTATIONS on State Report Card**



# O.W. Holmes School

## Demographics



- Enrollment: 323
  - 88.7% African American
  - 6.4% Hispanic
  - 1.5% White
  - 2.3% Two/More Races
  - 1.1% American Indian
- 28.2% SWD
- 95.9% Economically Disadvantaged

## Data Spotlight

We have been successful in reducing the number of students **significantly below** grade level on the STAR tests.

	Fall 2023	Winter 2024	Change
Reading	68.1%	53.7%	-14.4%
Math	60.6%	41.6%	-19%
Early Literacy	62.5%	20%	-42.5%



# O.W. Holmes Points of Pride

## Academic Focus Areas:

- Explicit Instruction
- Differentiation
- Small Group instruction

## Culture & Climate

- PBIS & Attendance Celebrations
- Paw Store
- FAST & other family engagement events

## Community School Partnerships

- United Way/Milwaukee Public Museum
- Milwaukee Urban League
- Growing Minds
- Humane Society
- Urban Ecology Center

## Verizon Innovative Learning School

- 1:1 Chromebooks with focus on integrating technology
- STEM lab with 3D Printing & VR

## Library Makerspace

- \$25,000 raised over past two years

## Head Start

- 17 students with para and teacher

## Extra Curriculars

- African Dance
- Basketball
- Cheerleading
- Flag football
- Soccer



**MILWAUKEE  
PUBLIC SCHOOLS**

**Thank  
You!**