

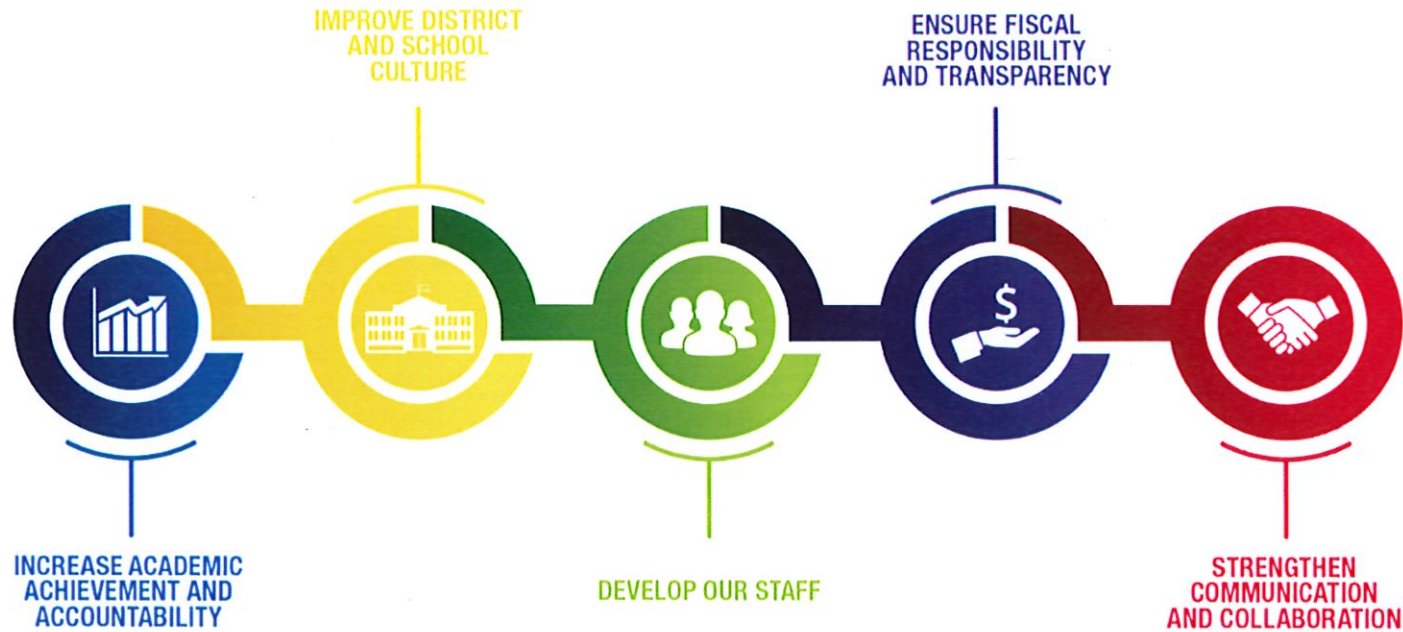
Roadmap to Readiness Update 2021-22



Dr. Keith P. Posley, *Superintendent*

MILWAUKEE
PUBLIC SCHOOLS

Five Priorities for Success



Transition to Full In-Person Learning

Overview

- Background Information
- Points of Pride
- Lessons Learned
- 2021-2022 School Year (SY)
- Transition to full in-person learning
- Workgroups
 - Moving our instructional agenda
 - What you can expect



Phase I and Phase II: Overview

Virtual/In-Person Learning

Monday



Tuesday



Wednesday



Thursday



Friday



Monday



Tuesday



Wednesday



Thursday



Friday



Points of Pride

During Phase I and Phase II by the numbers

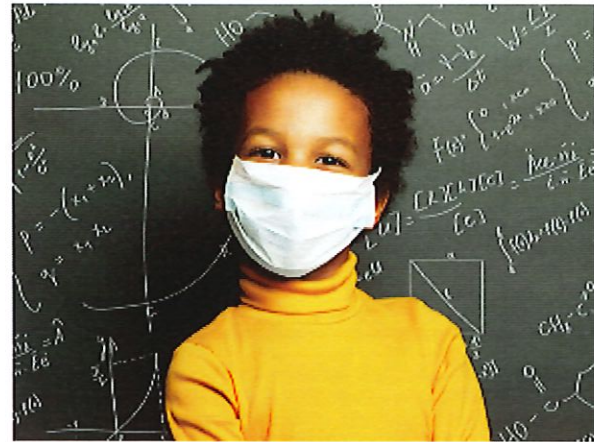
- **Every student** had a working school-issued Chromebook to engage in remote learning throughout the year
- **14,000** active Google Classrooms each week
- **13,000** WiFi Hotspots provided to students to bridge virtual learning
- **1,677** applications collected for kindergarten enrollment parents; **756** registered guests to the two events
- **119** safe operations of Community Learning Centers (CLC's), Safe Places, and Childcare Camps that supported **4,666** students of working families
- **1,773,964** meals provided to children and community members at 50 Stop, Grab and Go Sites from July 2020 - April 2021
- **7,091** HEPA filtration units delivered for every classroom and shared space in the district in addition to over **80,000** individual plexi barriers
- **250,000+** N95 masks, **20,000+** face shields and **9,000+** gowns delivered



Points of Pride

During Phase I and Phase II

- Three sites opened to ensure IEP and 504 safeguards were in place for students
- Virtual parent conferences and IEP meetings had an increased number of participants
- Organized and implemented two Student Leadership Summits
- Students in need benefited from various tutoring opportunities
- Successful continuation of the expansion for the visual art and music programs
- Held graduation and completion ceremonies in person



Points of Pride

During Phase I and Phase II

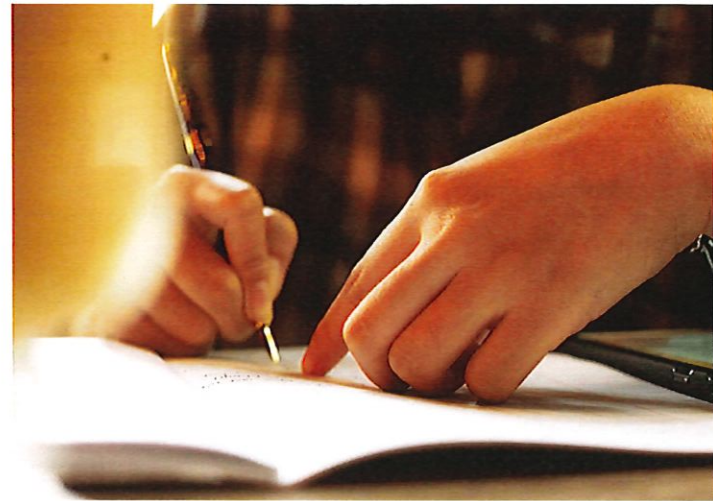
- Created district COVID-19 dashboard for stakeholders
- MPS sites were used for students, staff, and the community as vaccination clinics and COVID-19 testing sites
- Developed a hotline to ensure health and safety practices were routine
- Contact Tracing System created for students and staff



Lessons Learned

During Phase I and Phase II

- Constituents were concerned about the constraints of 3 cases closing a school
- Concerns with surveillance testing from parents and staff
- Constituents looked for district guidelines that followed public health guidance
- Building positive school communities were critical for success
- Concerns with concurrent teaching



2021-2022 School Year

Full in-person learning begins:

- **Early Start**

August 16

Teacher Start Day: Aug. 9

- **Traditional Start**






September 2

Teacher Start Day: Aug. 26



Full In-Person Learning

Five days of face-to-face, in-person teaching and learning

Monday	Tuesday	Wednesday	Thursday	Friday
				



Virtual Option

MPS Virtual School

- A standalone K-12 virtual program planned for Fall 2021
 - Limited-enrollment opportunity
 - Student remains enrolled in current school while participating in the virtual program
- A K-12 virtual school is being explored for the future
 - Ability to enroll new students currently attending other districts
 - Opportunity to provide expanded course offerings for students not enrolled at the virtual school through secondary enrollment



Health and Safety

Recommendations for 21-22 SY

Continue to follow current CDC guidance and make changes as updated

Masks required by staff and students indoors except while eating or drinking

Masks required on buses

Masks not required outdoors



**CENTERS FOR DISEASE
CONTROL AND PREVENTION**

Health and Safety

Recommendations for 21-22 SY

Isolation rooms maintained at each school

Physical distancing of at least 3 feet in classrooms to the greatest extent possible



**CENTERS FOR DISEASE
CONTROL AND PREVENTION**

©2021 Milwaukee Public Schools • 13



Health and Safety

Mitigation Strategies for 21-22 School Year

- Requirements to quarantine will be based on current CDC/Milwaukee Health Department (MHD) guidance depending on vaccination status
- Explore COVID-19 testing options
- Close contacts in a classroom would be only those that were within 6 feet of the positive case for more than 15 minutes
- Current MHD guidance is that three percent or more of a school's population with positive COVID-19 cases would result in the use of flexible scheduling



Health and Safety

Air Quality Controls

- MPS HVAC units will continue to supply the maximum amount of outside air the unit can safely provide and the systems are running two hours before and two hours after buildings are occupied
- Mechanical consultants hired to perform design assessments on existing ventilation systems
- Contractors hired to confirm if existing ventilation systems are operating to their full capability
- Create a remediation plan when necessary for any corrective measures needed to systems and determine best course of action



Health and Safety

Air Quality Timeline

Addressing the existing ventilation systems:

- DFMS continues to work on deferred maintenance repairs to stay ahead of consultants creating design packages with Engineering Data Sheets (EDS)
- Consultants are being hired for EDS through **December 31, 2021**
- As EDS gets completed, testing and balancing (TAB) contractors will perform services that equate to a ventilation audit for the **next two years**
- TAB reports of ventilation systems may require remediation efforts which result in capital projects to be completed in the **next three years**

Integrated Project Delivery (IPD) contractor(s) to assist DFMS

- Including the tasks identified above, IPD contractor will develop overall timeline, project planning and implementation of construction projects within ESSER funding guidelines over the **next three years**
- RFP for IPD contractor should be bid out in **June and presented at July Board meeting**



What you can expect:

Health and Safety

- Continued consistent messaging around health and safety information for families
- Documentation and monitoring of COVID-19 cases with the use of established Smartsheet data gathering and dashboard reporting tools
- Plexiglass barriers returned and cleaned, and additional plexiglass barriers purchased as needed
- Continued use of HEPA filters in all classrooms and common spaces
- Each building will maintain additional cleaning staff
- Rest rooms will be inspected and supplies will be replenished as needed
- Additional cleaning of each school will occur during the summer



What you can expect:

Academic Expectations

- In-person teaching and learning will replace concurrent teaching and learning
- Ambitious Instruction: clear focus on acceleration
- Summer planning with school teams focused on School Improvement Plans
- Instructional best practices that encourage physical distancing
- Curricular work to align standards and prioritize learning
- Google Classroom and digital platforms used to promote digital literacy
- Vertical grade level articulation



Curriculum Planning Professional Development

Adopted Reading and Science Textbooks

Reading:

- July 13-15, 22, 23 from 10:00 am-12:00 pm and from 1:00 pm-3:00 pm
- August 11 for Early Start; August 31 for Traditional

Science:

- July 16-23 from 10:00 am-12:00 pm or 2:00 pm-4:00 pm for Houghton Mifflin Harcourt (HMH) K-8 Science
- July 13-15 from 10:00 am-12:00 pm or 2:00 pm -4:00 pm for Biology/Chemistry
- July 20 from 1:00 pm -3:00 pm for Earth Science
- July 23 from 1:00 pm-4:00 pm for Anatomy and Physiology
- July 26 from 1:00 pm-4:00 pm for AP Biology
- July 27 from 1:00 pm-4:00 pm for Botany



Professional Development

Early Start Calendar

	<u>August 9</u> Monday	<u>August 10</u> Tuesday	<u>August 11</u> Wednesday	<u>August 12</u> Thursday	<u>August 13</u> Friday
3 Hours	Organization Day	Academic Overview	Academic Overview	Academic Overview	Instructional Technology
	Health and Safety	Classroom and School-wide Supports	School Operations	School-based Options	School-based Options
3 Hours	Classroom Set-up/Planning	Classroom Set-up/Planning	Classroom Set-up/Planning	Classroom Set-up/Planning	Classroom Set-up/Planning



Professional Development

Traditional Calendar

	<u>August 26</u> Thursday	<u>August 27</u> Friday	<u>August 30</u> Monday	<u>August 31</u> Tuesday	<u>September 1</u> Wednesday
3 Hours	Organization Day	Academic Overview	Academic Overview	Academic Overview	Instructional Technology
	Health and Safety	Classroom and School-wide Supports	School Operations	School-based Options	School-based Options
3 Hours	Classroom Set-up/Planning	Classroom Set-up/Planning	Classroom Set-up/Planning	Classroom Set-up/Planning	Classroom Set-up/Planning



What you can expect:

Professional Development

- Input by internal and external workgroup members in the development of districtwide professional development
- Collaboration with school teams to create the Essential 8
- Formative assessments
- Menu of options to support standards-aligned instructional systems
- Virtual and in-person options for professional learning



What you can expect:

Parent Support

- Communication with families for 21-22 school year logistics will begin in June
- Parent(s) may attend specific events virtually, including parent conferences and IEP meetings
- Parent resource information will continue to be housed on the MPS reopening website and offered in multiple languages



Classroom and School-Wide Supports

Welcome Week

	Training/Professional Development	Start date
New Staff & Student Induction	<u>Introductions/Informational meetings</u> <ul style="list-style-type: none"> • School tour and school specific guidelines • Policies and procedures • SEL supports 	Early - August 16 - September 20 Traditional - September 2 - October 8
Staff Training	<ul style="list-style-type: none"> • School support introductions, roles and responsibilities • Expectations • Procedures 	Early - August 10 - August 13 Traditional - August 27 - August 31
Core Instruction	SEL Welcoming Students <ul style="list-style-type: none"> • Establishing Community • Processing emotions 	Early - One day during the week of August 2 - August 6 Traditional - during the week of August 16 - August 20
Summer SEL Support	Resources provided to staff and families in preparation for returning in the fall	July 9, July 23, August 6, August 20 ©2021 Milwaukee Public Schools • 24

What you can expect:

Classroom Supports

- Continued school support staff interaction, lessons and guidance for students, staff and families
- SEL supports and services will be part of Tier I instruction
- First six weeks of SEL lessons will be provided to engage students in establishing routines and building community
- Professional development will be provided to support staff to ensure information is shared and expectations to support students are understood
- Academic support for struggling learners



School Operations

Transportation

- Bus Safety: Safety protocols established between MPS and bus companies
 - Masks on buses
 - Bus capacity based on CDC and MHD guidance
- Driver attraction and retention efforts underway for next few months
- Collaboration with bus companies to identify drop-off and pick-up areas to allow for physical distancing
- Bus information will be sent to all families
- Schools will establish safe entry and departure procedures



School Operations

- All 21st Century CLC Programs will begin on the first day at school locations
- Select Safe Place and Childcare Camp locations will also open on the first day of school with additional programs opening as part-time staff are hired



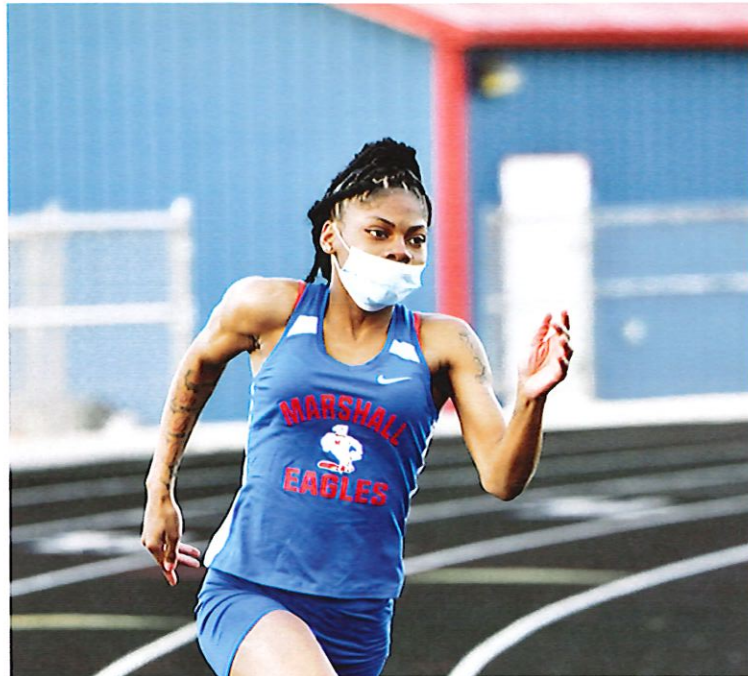
Programs: 2021-2022	Summer Locations	Fall Locations
Twilight Centers	6	8
Community Centers	6	13
Midnight League	3 (2 basketball/1 soccer)	3 (2 basketball/1 soccer)



School Operations

Athletics

- Online registration for 2021-2022 Fall Sports
- Five summer contact days for student athletes allowed
- Athletic equipment cleaned and ready to go
- Live streaming athletic events



Summer Academy

Program Highlights

June Term Middle and High School students: June 7 through July 2

Elementary Enrichment Summer School and ESY: June 22 through July 29

Summer School Enrichment and Credit Recovery: July 6 through July 29

- Following the reopening health and safety protocols
- In-person and virtual learning
- Large sites identified for appropriate distancing of staff
- Breakfast and lunch provided
- New career exploration program for middle and high school students
- Coordination with Camps, Community Learning Centers and Safe Places for full day programming



Summer Meal Options

Pilot meal delivery service in 53205,
53206 and 53233

Meals pre-ordered in advance

Grab & Go for summer is planned
(breakfast & lunch)

Meal services for the following
programs:

- 14 summer schools
- 34 CLC's
- 22 Camps
- 5 Twilight Centers



Staffing

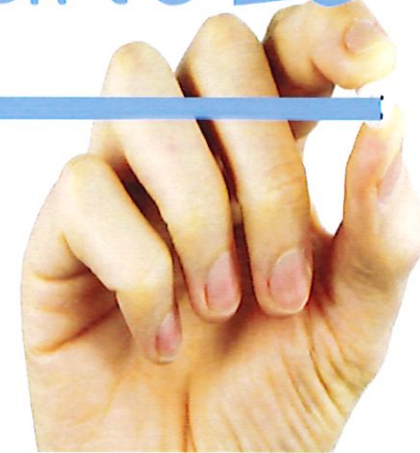
All staff will report to work in person at the start of the 2021-2022 school year

- All current approved remote work plans will sunset at the end of this school year
- Remote work accommodations based on the pandemic will not be offered moving forward

Human Resources is aggressively recruiting for the upcoming school year

- June 23 and 26 : MPS Job Fair (recruiting all positions – certificated and classified)
- Other job fairs/hiring events are being planned throughout the summer

HUMAN
RESOURCES



Summer Enrollment Outreach

- Each school will create a Summer Enrollment Plan and host a Summer Open House
- Canvassing by Student Services
- Canvassing in collaboration with stakeholders



Communications

Messaging and Timeline

June and July 2021 – Message to all district stakeholders about Fall school plans

- Develop and distribute a press release and engage press for media coverage about the school return for Fall 2021
- Use all district outreach tools (email, letters, social media, etc.) and advertisements (T.V., radio, bus, billboards) to help carry back-to-school and school enrollment messages to the public
- Ensure communication materials are translated into families' language preference
- Gain feedback from students, families, and staff to create communications and materials needed for Fall 2021 back-to-school



Communications

Messaging and Timeline

August and September 2021 - Welcome and celebrate the start of the 2021-22 school year

- Continue to give students, families, and staff up-to-date information about the district's fall back-to-school plan
- Ensure that students, families, and staff can access key information to begin school
- Promotion of Welcome Week for students
- Celebrate the first day of school for Early Start Schools – August 16, 2021
- Celebrate the first day of school for Traditional Start Schools – September 2, 2021



Reopening Workgroups

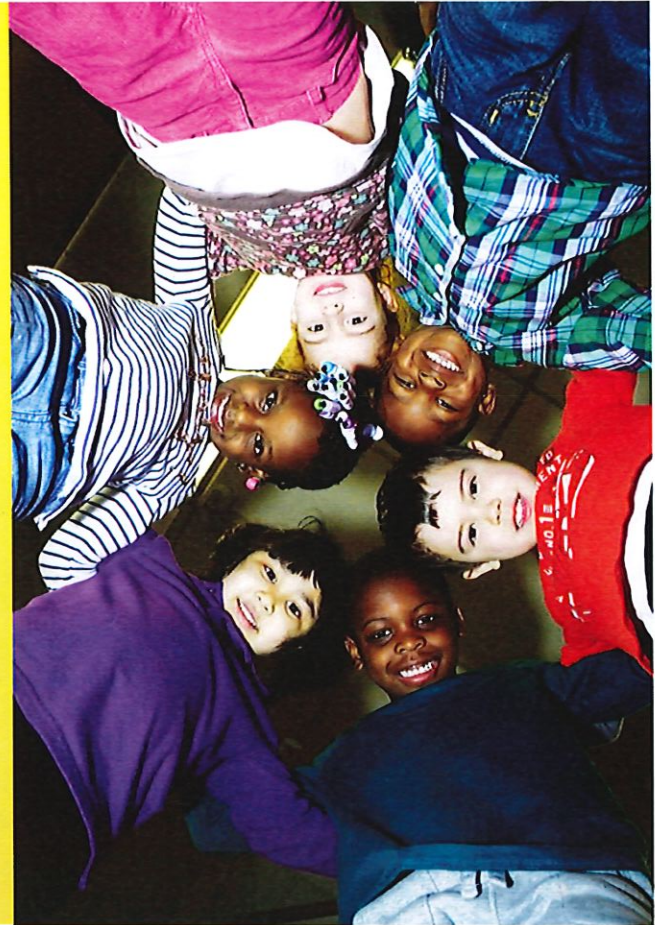
- Health and Safety
- Quality Instruction
- Student and Staff Support
- Efficient and Safe Operations
- Effective Communication



Note: Each workgroup team is comprised of principals, teachers, support staff, nurses and parents. Meetings were held weekly to discuss what is needed for a safe return to full in-person learning. Workgroup co-chairs have a list of all attendees and topics of discussion for each workgroup.



Thank you.



Dr. Keith P. Posley, *Superintendent*

©2021 Milwaukee Public Schools • 36

