

Family & Community Engagement Report

June 11, 2019



Presenters:

MILWAUKEE
PUBLIC SCHOOLS

Kellie J. Sigh, Director of Strategic Partnerships and Customer Service

Dr. Keith P. Posley, Superintendent of Schools

FIVE PRIORITIES FOR SUCCESS

Improve District and School Culture

Ensure Fiscal Responsibility and Transparency



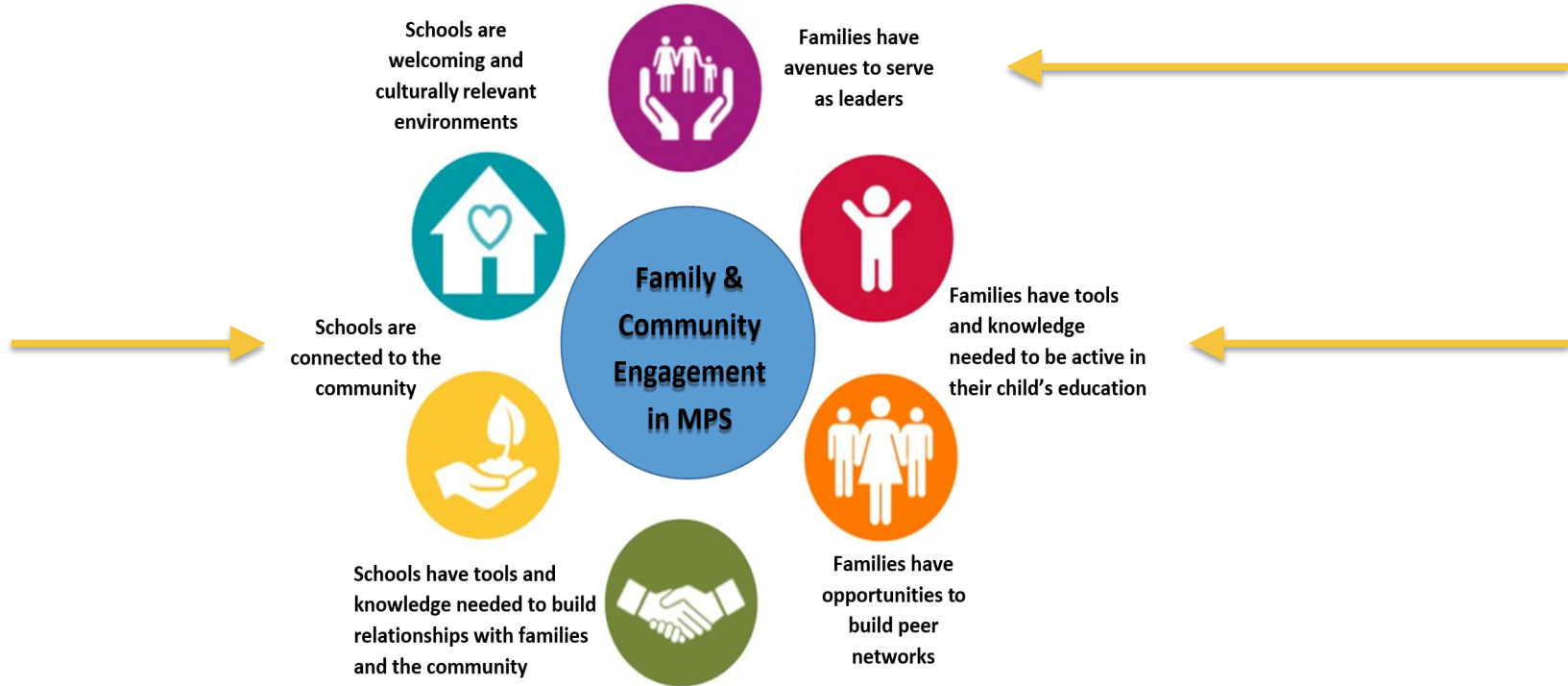
Increase Academic Achievement and Accountability

Develop Our Staff

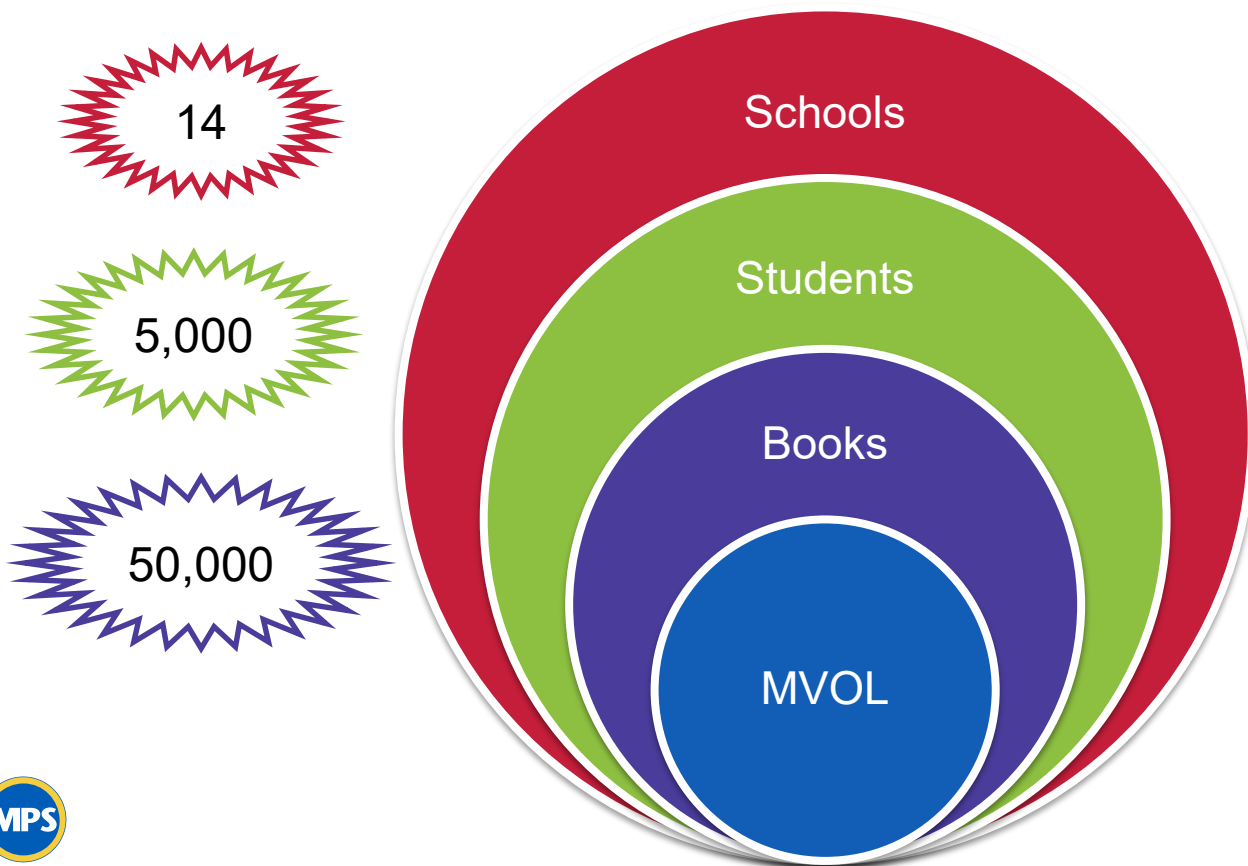
Strengthen Communication and Collaboration



MPS FAMILY & COMMUNITY ENGAGEMENT FRAMEWORK



MY VERY OWN LIBRARY 2018-2019



Auer Avenue Elementary

Brown St Academy

**Gwen T. Jackson Elementary
Hopkins-Lloyd Community
School**

Kagel Elementary

Kluge Elementary

Lancaster Elementary

Riley Elementary

Townsend Street Elementary

Zablocki Elementary

Doerfler Elementary

Longfellow School

Milwaukee Prep Lloyd St

Milwaukee Prep Lola Rowe



FAMILIES AS LEADERS

(Special Education Liaison for Families)



SPECIAL EDUCATION LIAISON FOR FAMILIES (SELF)

19 Parent Liaisons

- Parents/guardians who have a child with an IEP

School Support

- Browning
- Kilbourn
- Kluge
- ALBA
- Manitoba
- MHSA
- Audubon MS & HS
- Hamilton
- Highland Community
- Madison

Monthly Training

- 4-Fall
- 4-Spring

SPECIAL EDUCATION LEADERSHIP INSTITUTE FOR FAMILIES (SELIF)

College & Career Ready-IEP

Knowing Your Rights & Responsibilities

RtI & PBIS

Behavior & Discipline

Transition Planning

How Can I Get Involved!



DEVELOP OUR STAFF

Parent Coordinators



```
graph TD; A[Parent Coordinators] --> B[PC Institutes]; B --> C[Attendance Campaign, Youth Mental Health, MPS Resolution Agreement, Ambitious Instruction Plan, Summer Reading, Pregnant and Parenting Youth Program];
```

PC Institutes

Attendance Campaign, Youth Mental Health, MPS Resolution Agreement, Ambitious Instruction Plan, Summer Reading, Pregnant and Parenting Youth Program

Thank you.

Presenters:

Kellie Sigh, Director of Strategic Partnerships and Customer Service



Dr. Keith P. Posley, Superintendent of Schools

