



**MILWAUKEE  
PUBLIC SCHOOLS**

# Northwest Region Showcase

January 16, 2025

**Eduardo Galván  
Interim Superintendent**



**MILWAUKEE**  
PUBLIC SCHOOLS

# Northwest Region Showcase

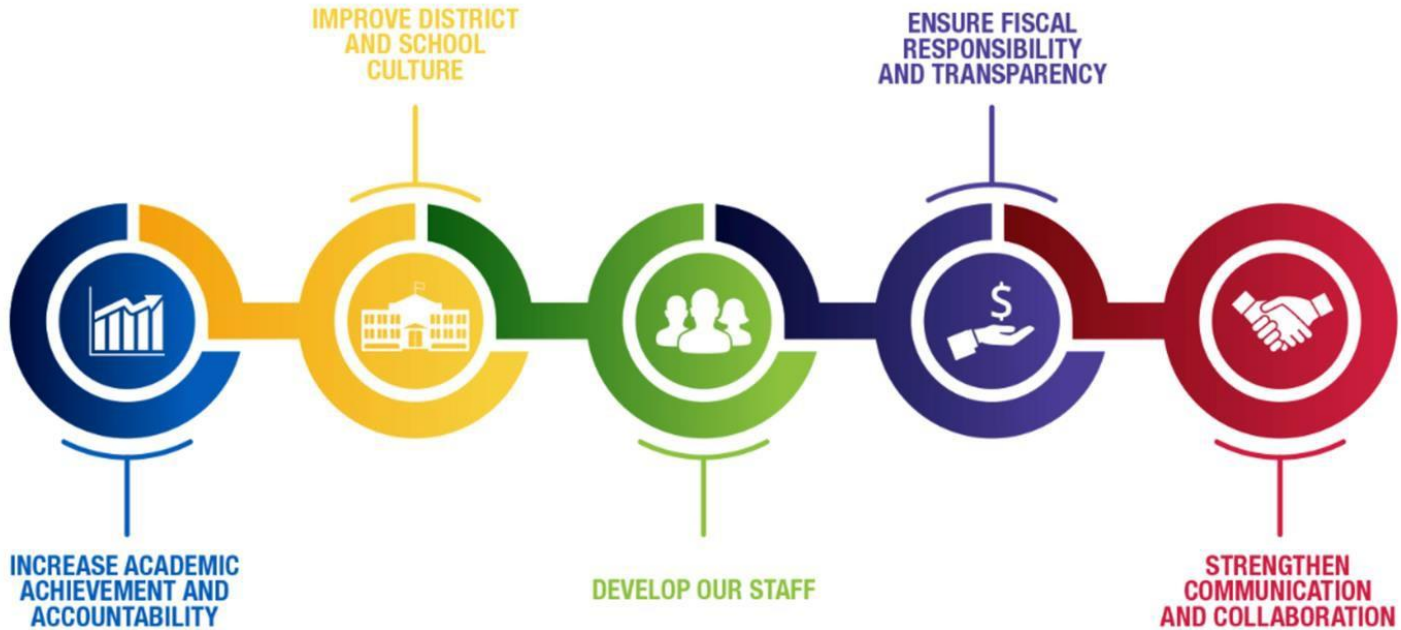
## *Presenters*

Dr. Toni Dinkins  
*Regional Superintendent*

Maurice Turner  
*Instructional Leadership  
Director*

Jason Galien  
*Principal*  
Byron Kilbourn School

# *Five Priorities for Success*



# *Strategic Plan Driving Our Mission*



## **Strategic Plan Driving Our Mission:**

MPS is a diverse district that welcomes all students and prepares them for success in higher education, post-education opportunities, work, and citizenship.

# Northwest Region Schools

## K-5 Schools

- Barton
- Bruce
- Bryant
- Eighty-First St.
- Emerson
- Engleburg
- Goodrich
- Hampton
- Hawthorne
- Kilbourn
- Kluge
- Maple Tree
- Ninety-Fifth
- Parkview

## K-8 Schools

- Carson Academy
- Congress
- Lancaster
- Thoreau
- Townsend

## Academic Specialty Schools

- MKE German Immersion
- MKE Sign Language
- Stuart Elementary (IB)
- Morse Middle School (IB)
- River Trail School for Agricultural Sciences

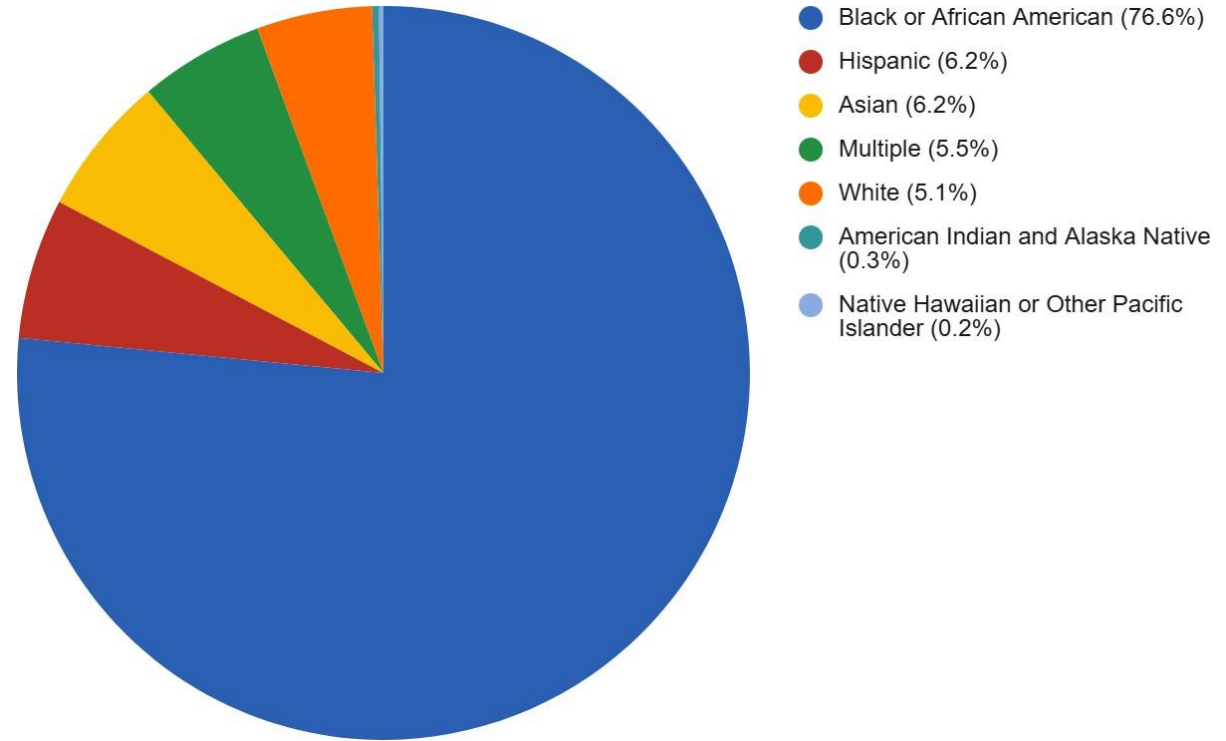
## Community Schools

- Browning
- Grantosa Drive

# Northwest Region Demographics

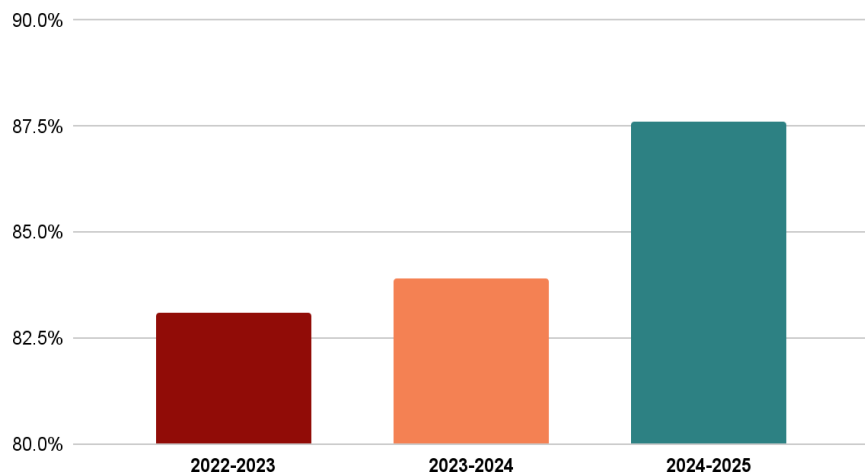
- 8,959 students
- 26 schools
- 2.4% English Learners
- 24.3% Students with Disabilities
- 82.7% Economically Disadvantaged

% of Students Enrolled by Racial Group

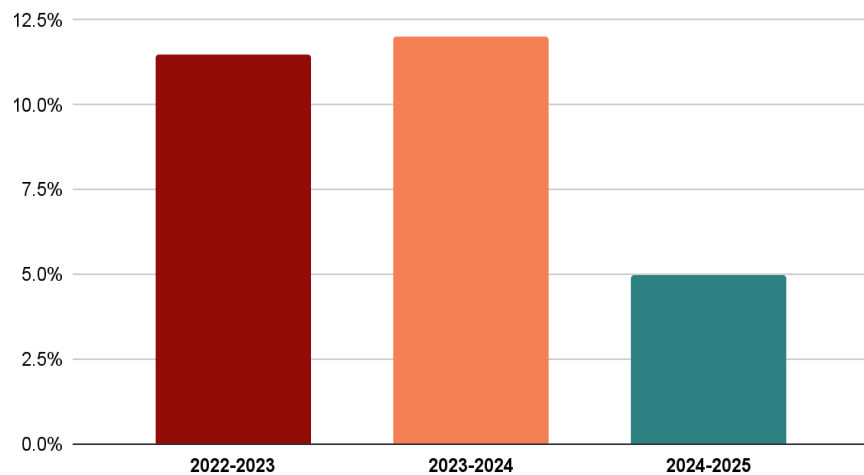


# Northwest Region Climate Data

## Attendance LYTD vs. YTD



## Suspension Rate LYTD vs. YTD



# Northwest Region Instruction Improvement Plan

## Phase 1

- Created regional goals to center discussions around data
- Focused on the use of district-approved curriculum and resources
- Organized professional development for international teachers

## Phase 2

- Initiated a framework for Professional Learning Communities (PLCs) in all Northwest Region schools
- Intentionally aligned Comprehensive School Improvement Plans (CSIP) with regional goals and walkthrough protocol
- Wrote a proposal for coaching and learning around PLCs

## Phase 3

- Integrate unpacking the standards commonly missed on the WI Forward Exam into PLC discussions
- Curriculum mapping to identify points in the district-approved curriculum where these standards are taught

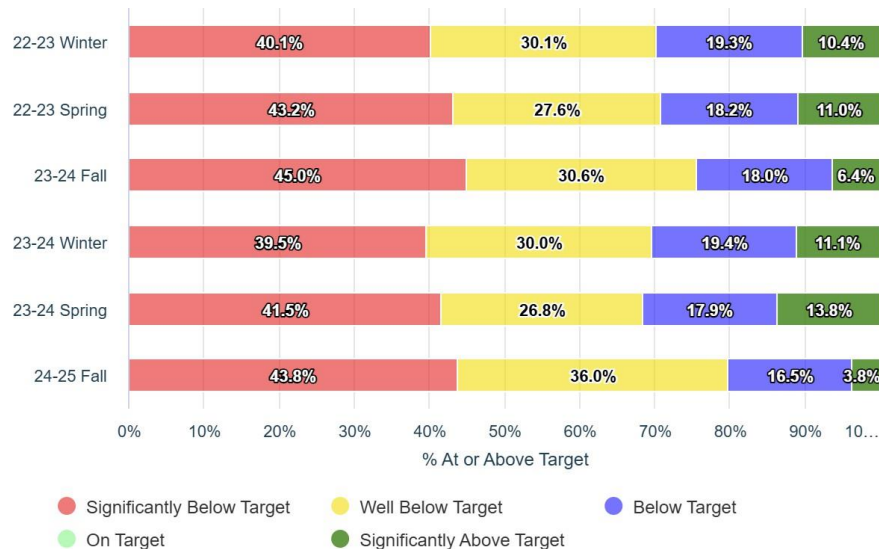


# Northwest Region STAR Overview

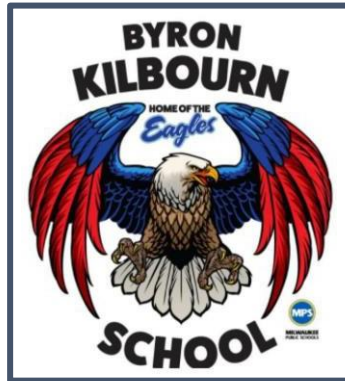
## Reading



## Mathematics



# Byron Kilbourn School



**Principal: Jason Galien**

**Student Enrollment: 230 students**

**Students w/Disabilities: 32.2%**

**Economically Disadvantaged: 89.1%**

**Racial Demographics:**

Black or African American: 86.5%

Hispanic: 7.4%

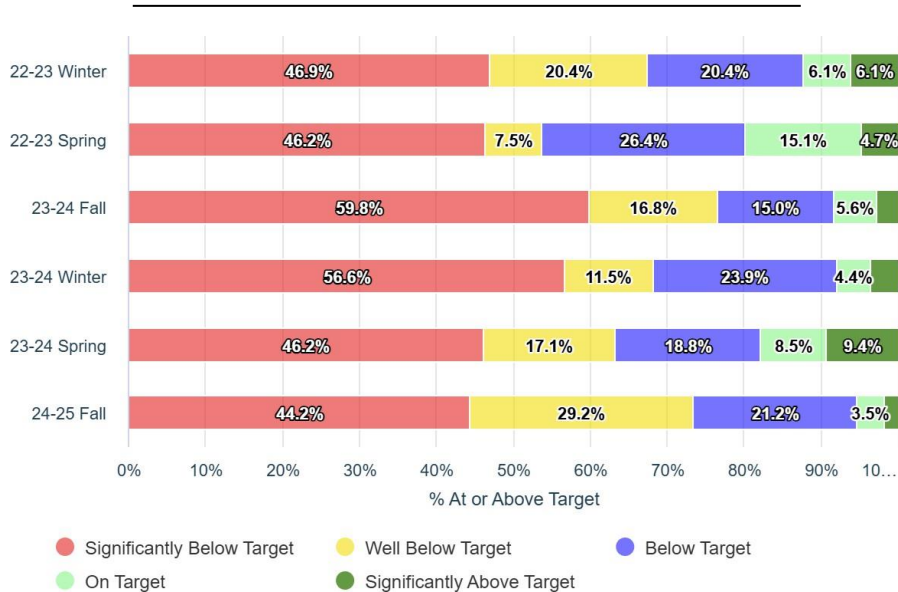
Multiple: 3.0%

Asian: 2.2%

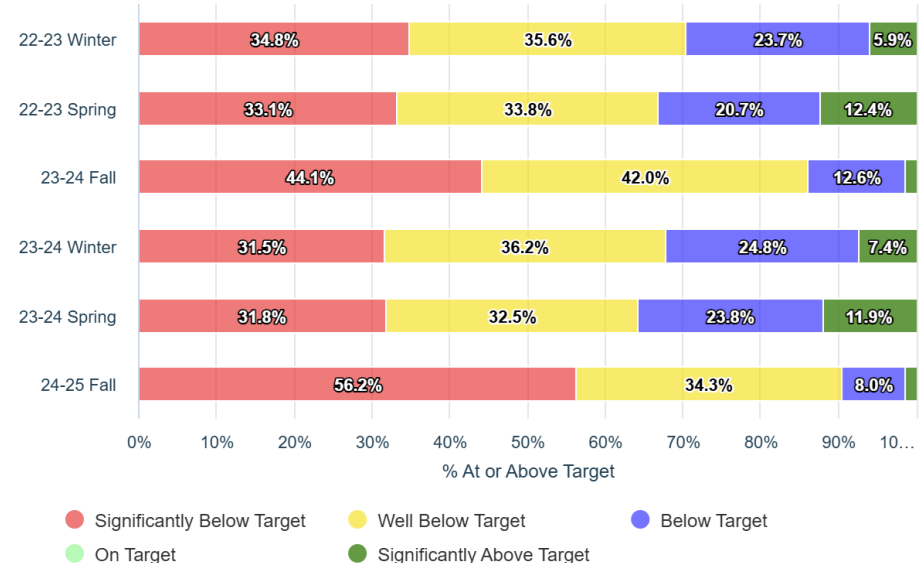
White: 0.9%

# Bryon Kilbourn STAR Overview

## Reading



## Mathematics



# Kilbourn School Improvement Plan Focus

## Instruction

### **EBIS:**

Professional Learning Communities



### **Instructional Lever:**

Explicit Instruction & Student  
Engagement



### **Instructional Practice:**

Use of district-adopted/approved  
curriculum

## Culture and Climate

### **EBIS:**

Positive Behavior Intervention Supports



### **Culture and Climate Pathway:**

Positive Behavior Intervention  
Supports



### **Culture and Climate Component:**

Accountability Systems

# Report Card Data Growth



# Kilbourn Points of Pride

- **Attendance Rate**
  - 87.2% up from 80.7% YTD
- **Suspension Rate**
  - 5.4% down from 9.0% YTD
- **STAR Participation Rates**
  - Reading: 98%
  - Math: 98%
  - Early Literacy: 92%
- **iReady - Reading**
  - 83% of students are passing their lessons at a rate of 70% or higher
- **ST Math**
  - During Semester 1 students in K-5<sup>th</sup> grades met their required usage time



# Kilbourn Student-Centered Focus

- Increased student enrollment for the third consecutive year
- Maintained zero staff vacancies this year
- Recognized for scoring over 80% on the Tiered Fidelity Inventory in Tier 1, Tier 2 and Tier 3 in 2023-24
- Completed our outdoor classroom
- Upgraded our multipurpose room with a new floor, paint, and new basketball backboards & rims



# Looking Ahead at Kilbourn



- Recruit passionate staff to join the Kilbourn Team
- Prioritize attendance improvement strategies
- Partner with district coaches to support content instruction
- Build and maintain community partnerships





MILWAUKEE  
PUBLIC SCHOOLS

A word cloud centered around the words "Thank" and "You" in large yellow font. Other words include: Vinaka, Maake, Asante, Shukria, Dhanyavadagalu, Manana, Dankon, Kam Sah Hammida, ار كيش, Kiitos, Maanana, Dankscheen, Спасибо, 감사합니다, Dank Je, Mauruuru, Biyan, Chokrane, Djolch i Chi, Terima Kasih, Matondo, Blagodaram, Dziekuję, Arigato, Taiku, Tack, Ngiyabonga, Juspaxar, Grazias, Gracias, Mochchakkeram, Bedankt, Dhanyavada, cảm ơn bạn, Khap, Tingki, Ua Tsaug Rau Koj, Dakujem, Gratias Tibi, Dëkuji, Niringgrazzjak, Hvala, Kia Ora, Kop Khun, Paldies, Obrigado, Suksama, Rahmat, Matur Nuwun, 谢谢, Xвала, Welalin, Di Ou Mèsi, Merci, Go Raibh Maith Agat, ありがとう, Misaotra, Matur Nuwun, 谢谢, Xвала, Danke, Merci, Salamat, Raibh Maith Agat, Djiere Dieuf, Eskerrik Asko, Najis Tuke, and ขอบคุณคุณคุณ.