



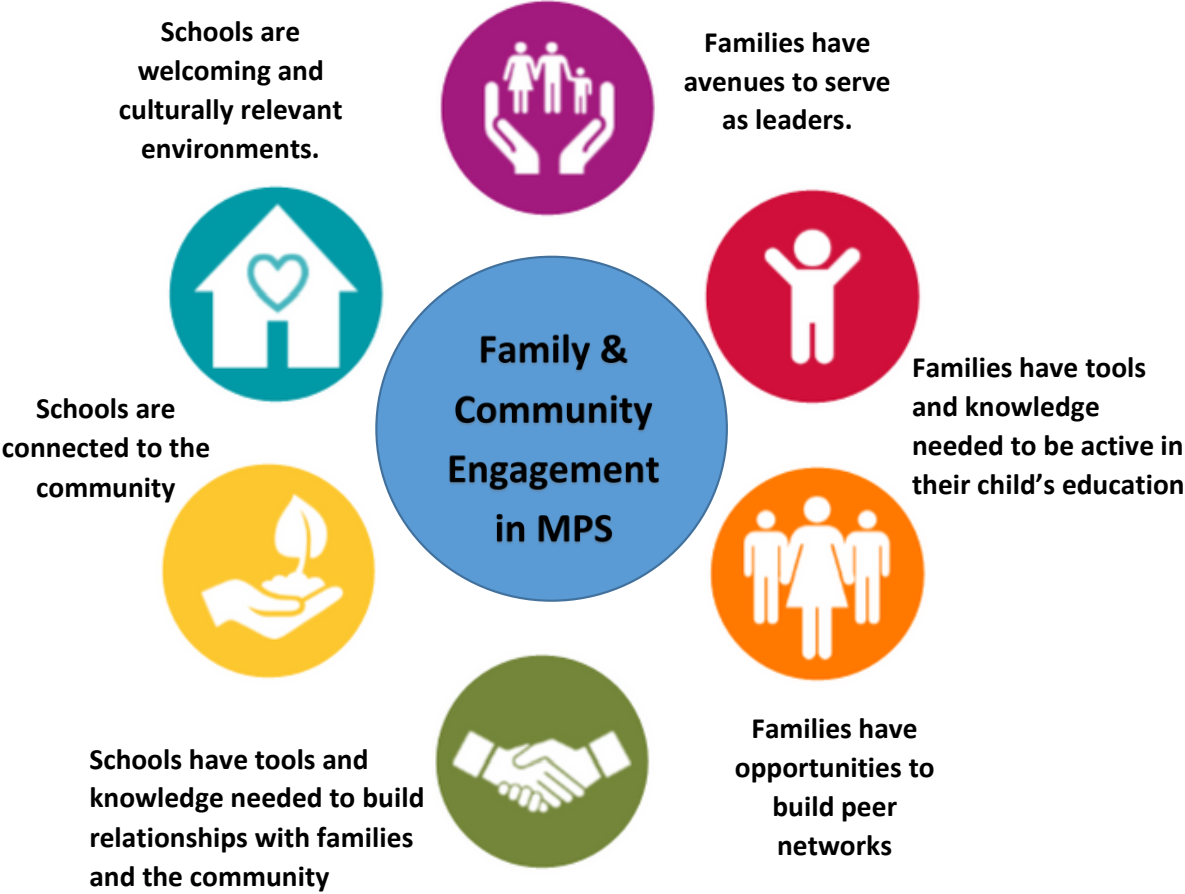
Family & Community Engagement Framework

Empowering Families

Families play a vital role in the education of their children. Milwaukee Public Schools provides tools for engagement between families and staff to be equal partners in supporting student achievement and school improvement. When families and schools work together, students are more successful and the entire community benefits.

What does this look like in schools?

All schools are working to meet the Six Standards of Family & Community Engagement:



Why are we doing this?

The Milwaukee Board of School Directors has set forth a goal of Student, Family and Community Engagement within MPS. This goal translates into the district strategic plan through 8 Big Ideas, one of which is to Re-envision Partnerships. Empowering families is a part of how we work to build mutually beneficial partnerships and collective impact efforts to maximize resources that promote greater student outcomes and the Six Standards help us get there.