

Report with Possible Action on Post-Secondary Enrollment Data

November 12, 2020

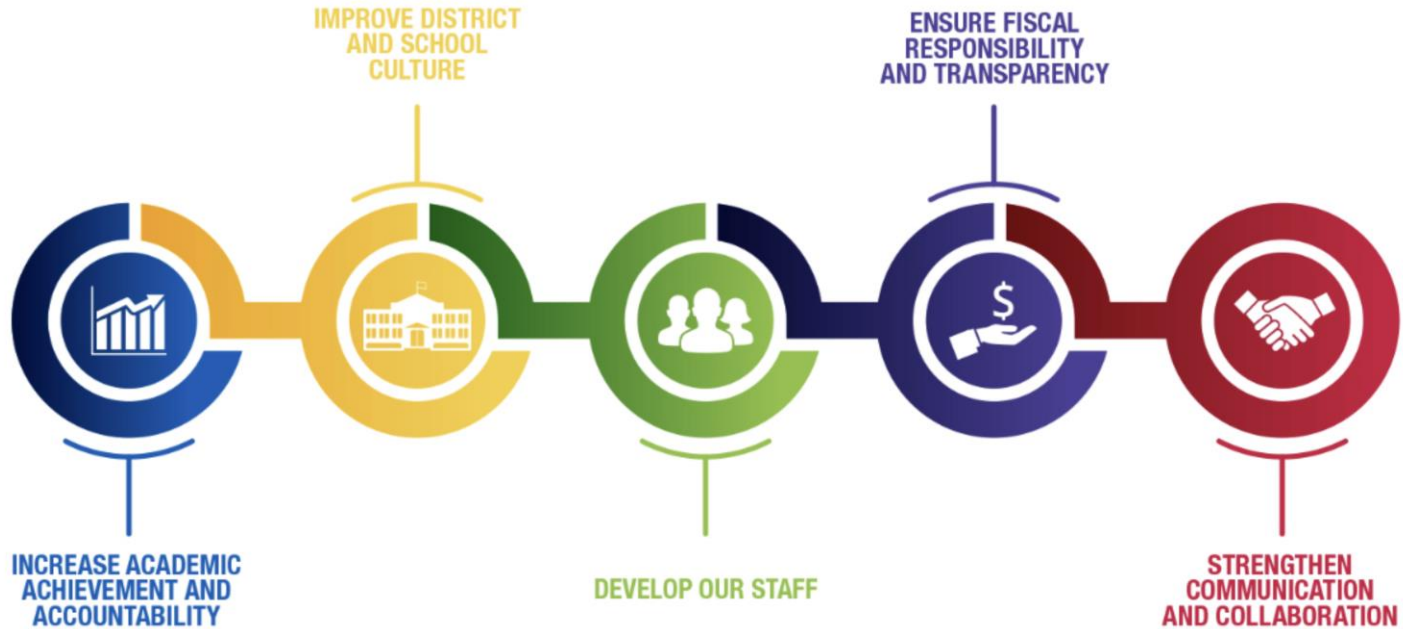


MILWAUKEE
PUBLIC SCHOOLS

Presenters: Melanie R. Stewart, Ph.D.
Director Research, Assessment and Data

Dr. Keith P. Posley,
Superintendent

Five Priorities for Success



National Student Clearinghouse

- Provides the national source of education verification and student outcomes.
- National Student Clearinghouse provides data about post-secondary enrollment and graduation from 3,600 colleges and universities.



National Student Clearinghouse

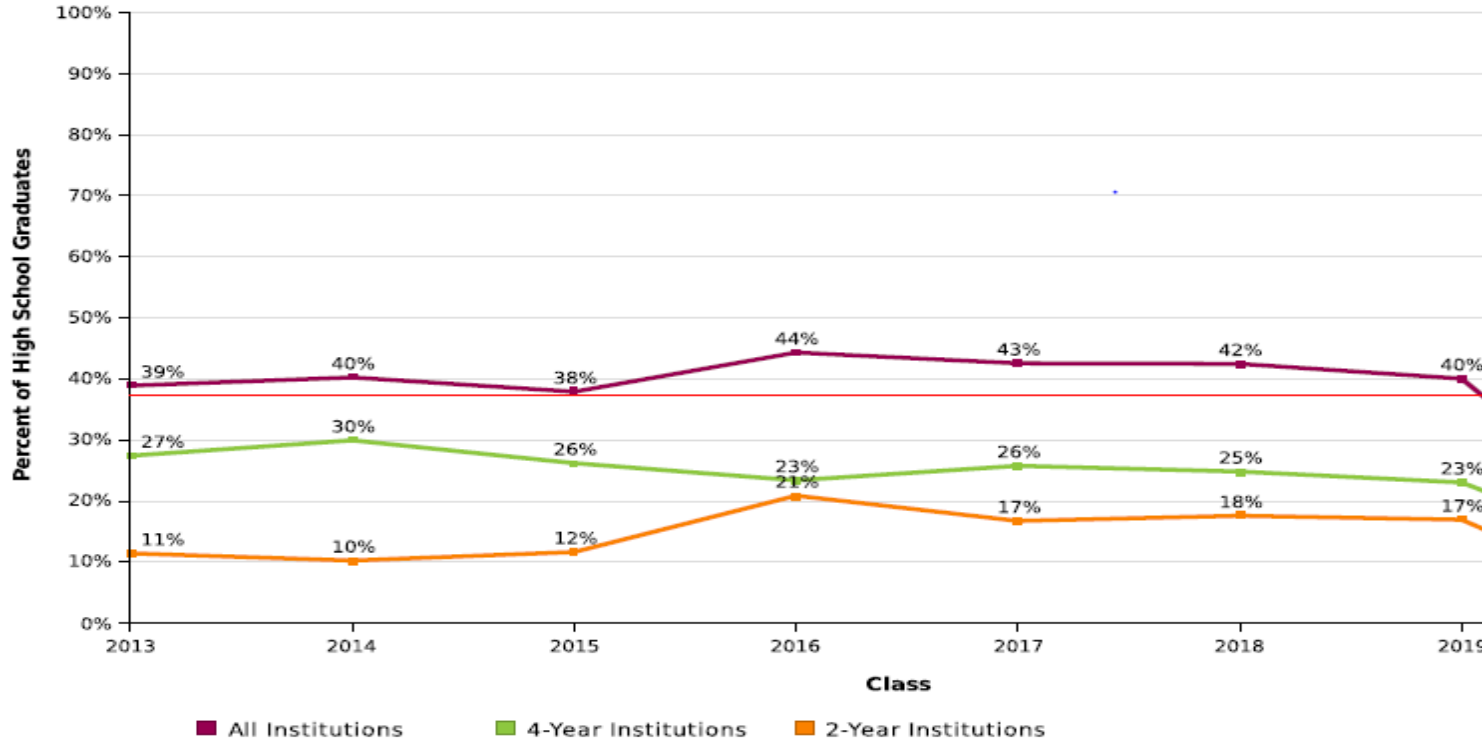
The Data Resources:

- NSC works with over 11,000 high schools representing nearly 60% of high school students.
- 97%, or 18.3 million, of currently enrolled postsecondary students (99% of all public and private institutions) are part of the database.
- Over 94% of all degrees awarded in the U.S. are tracked.



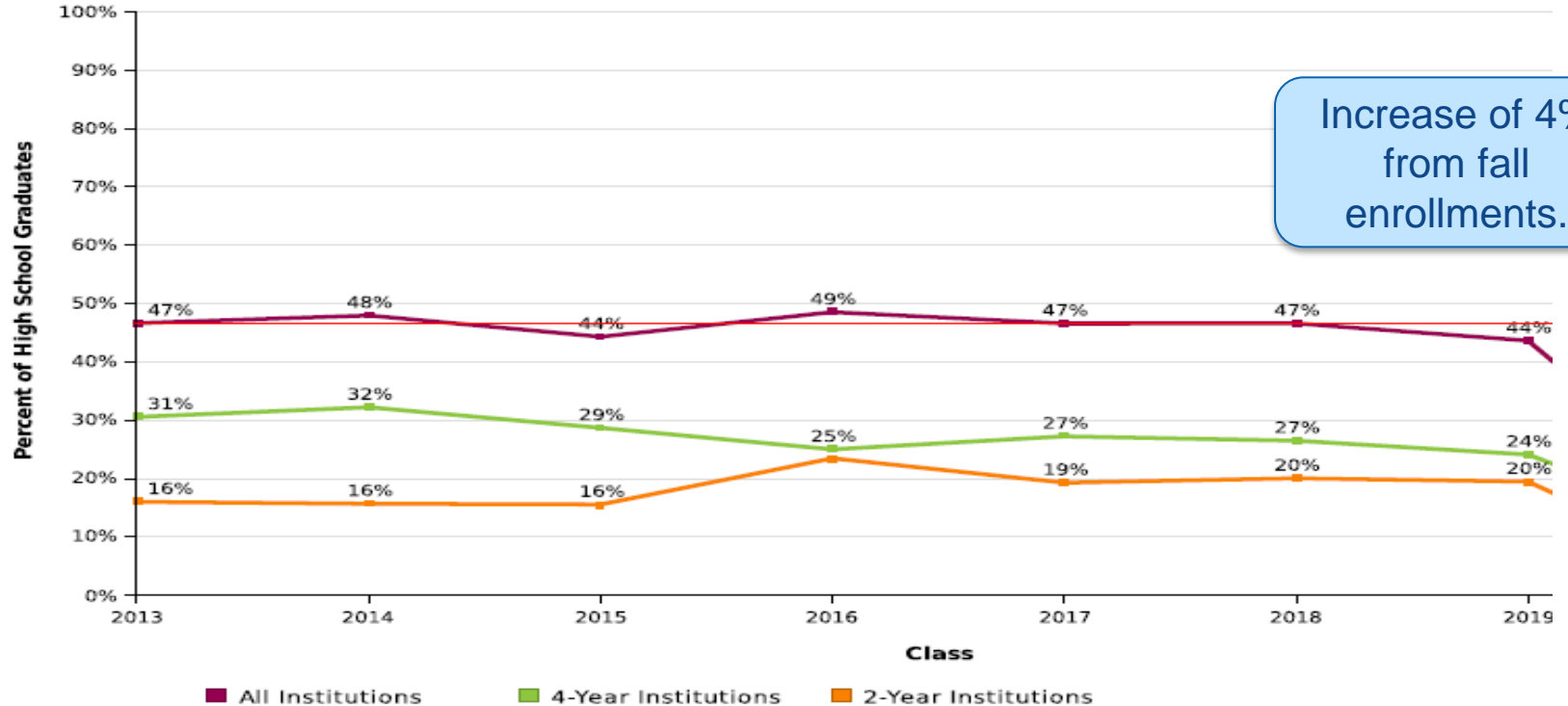
Percent of 2019 Graduates Enrolled in Fall Immediately After Graduation

Effective Date = September 18, 2020



Percent of 2019 Graduates Enrolled Anytime in the First Year After Graduation

Effective Date = September 18, 2020

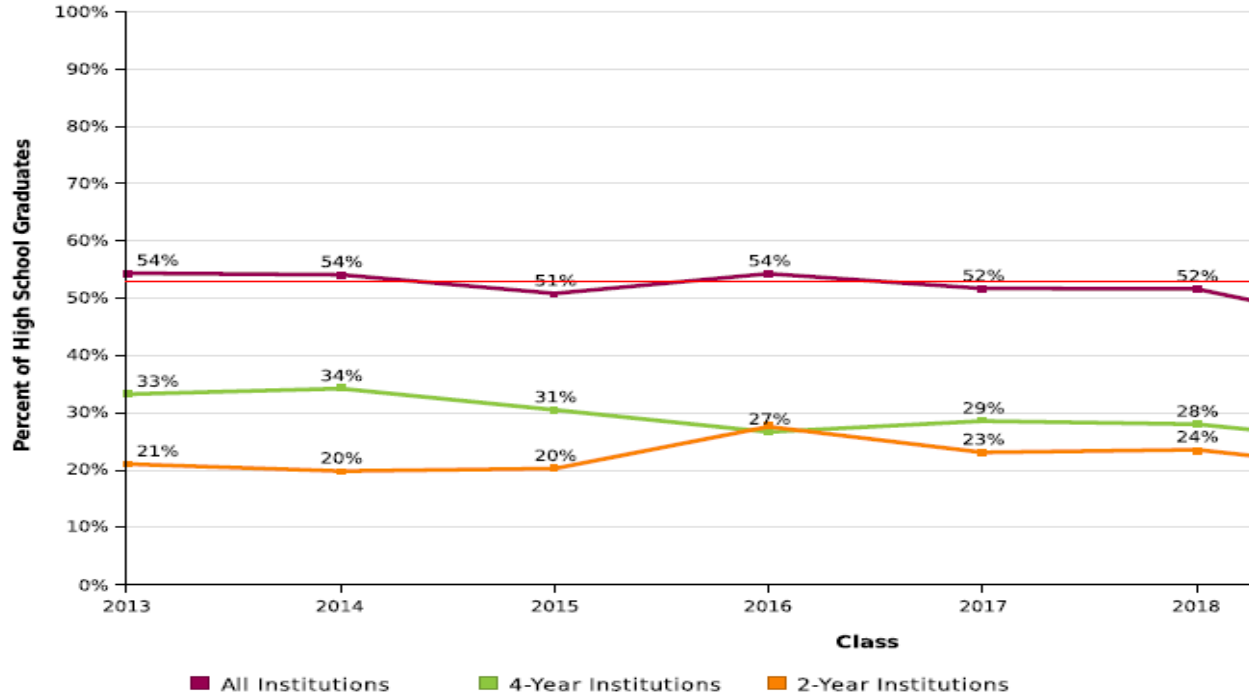


Increase of 4%
from fall
enrollments.



Percent of 2018 Graduates Enrolled Anytime in the Two Years After Graduation

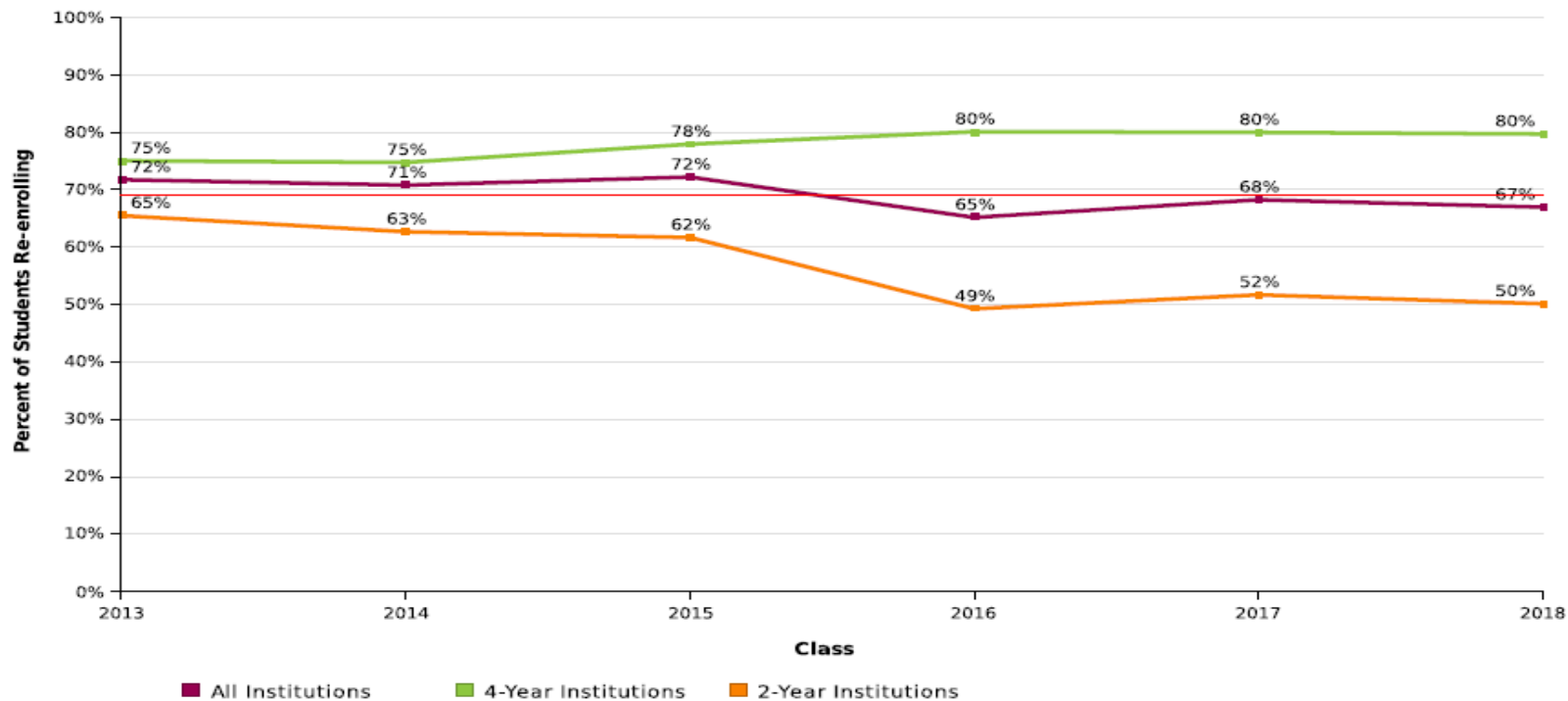
Effective Date = September 18, 2020



Increase of 10%
from fall
immediately after
graduation.

Persistence

Effective Date = September 18, 2020



Preparing Students for Post-Secondary

- 682 Students took 1,281 dual enrollment semester courses during the 2019-2020 school year.

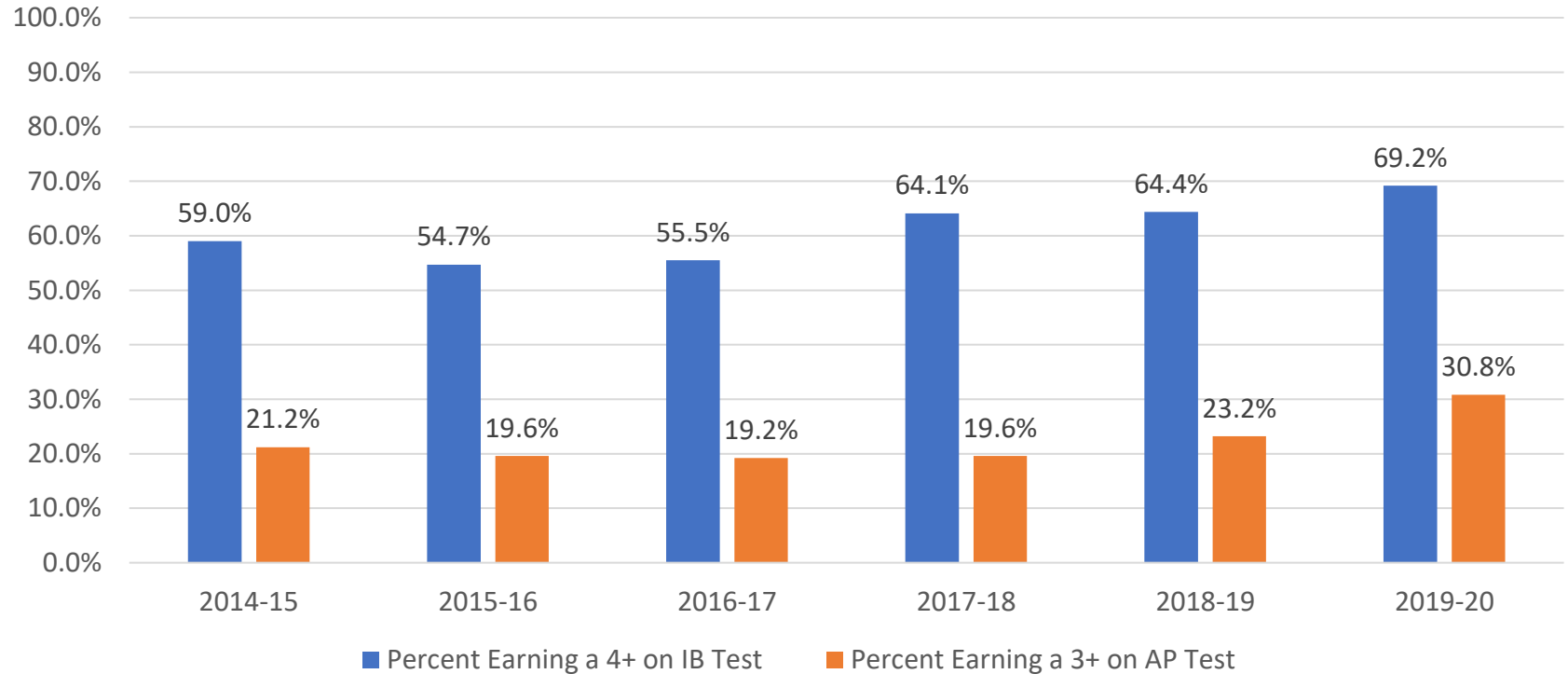
M3 Program 2019-20 Semester 1 (476 Credits)

100% at least 3 credits
95% at least 6 credits
76% 10 credits

M3 Program 2019-20 Semester 2 (421 Credits)

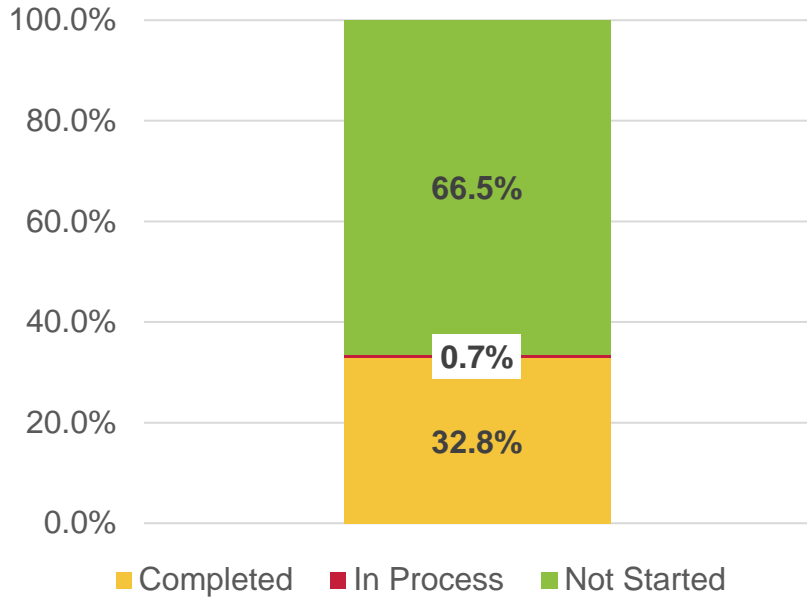
98% at least 3 credits
86% at least 6 credits
75% 9 or 10 credits

Percent of Passing Scores

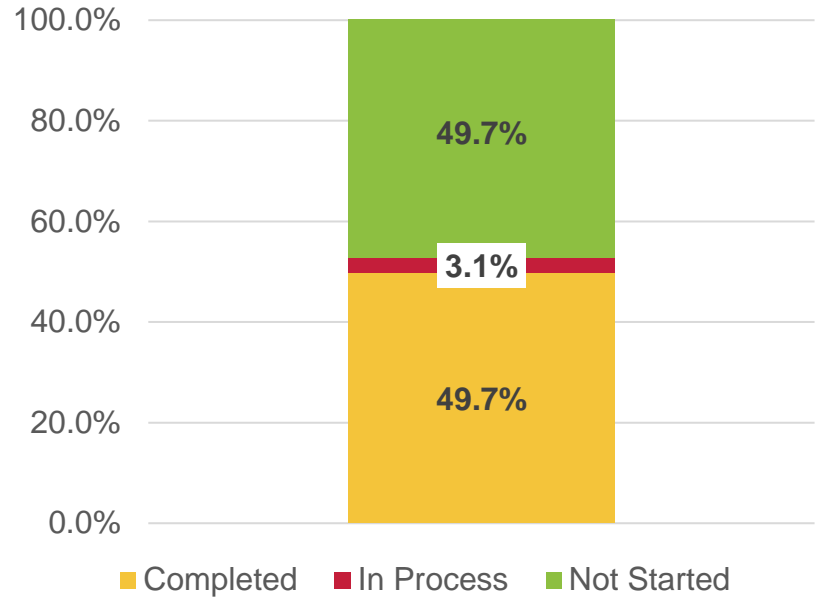


FAFSA Completion Status for Financial Aid Year 2020-21

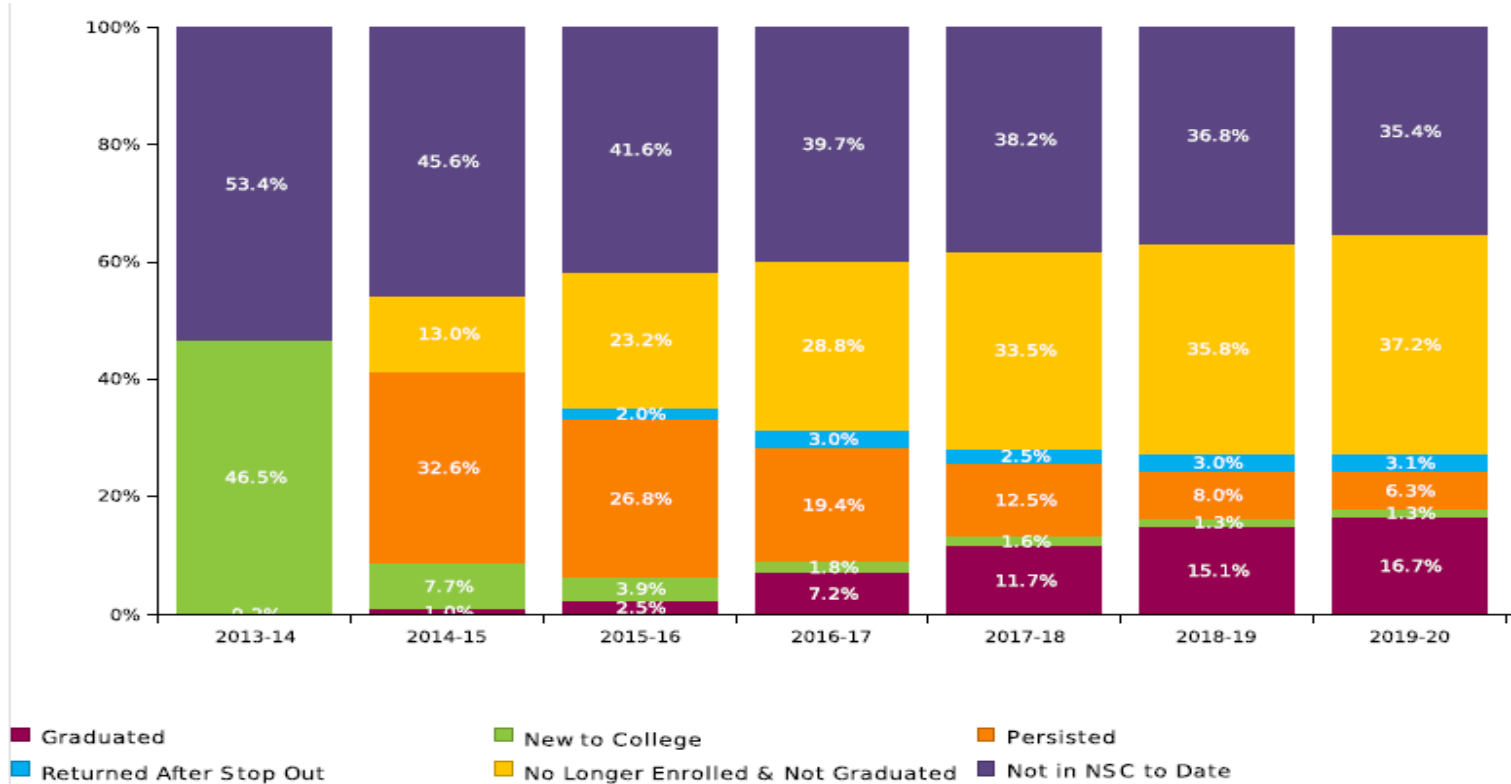
State



Milwaukee Public Schools



Graduating Class of 2013



Graduates Enrolled by School

Most Common Institutions of Enrollment in the Fall Immediately following High School Graduation for All Classes by Number of Students

Name	Rank	State	Level	Type	Total
MILWAUKEE AREA TECH COLLEGE	1	WI	2-year	Public	3,250
UNIVERSITY OF WISCONSIN - MILWAUKEE	2	WI	4-year	Public	1,739
UNIVERSITY OF WISCONSIN - MADISON	3	WI	4-year	Public	602
UNIVERSITY OF WISCONSIN - WHITEWATER	4	WI	4-year	Public	359
MARQUETTE UNIVERSITY	5	WI	4-year	Private	350
MOUNT MARY UNIVERSITY	6	WI	4-year	Private	349
ALVERNO COLLEGE	7	WI	4-year	Private	327

Next Steps

- Expect and support all students toward the goal of post-secondary readiness throughout their K-12 education.
- Continue relationships with post-secondary institutions and programs that support out students' preparation for beyond high school. Some include:
 - M³ College Connection,
 - Early College Credit Program/Start College Now,
 - College Possible,
 - People Program,
 - Boys and Girls Club, and
 - Schuler Scholars
- Improve access and expect students to take rigorous course work during high school.



Thank you.



Dr. Keith P. Posley, *Superintendent*

