

Rogers Street Academy – Regional Showcase

October 8, 2019

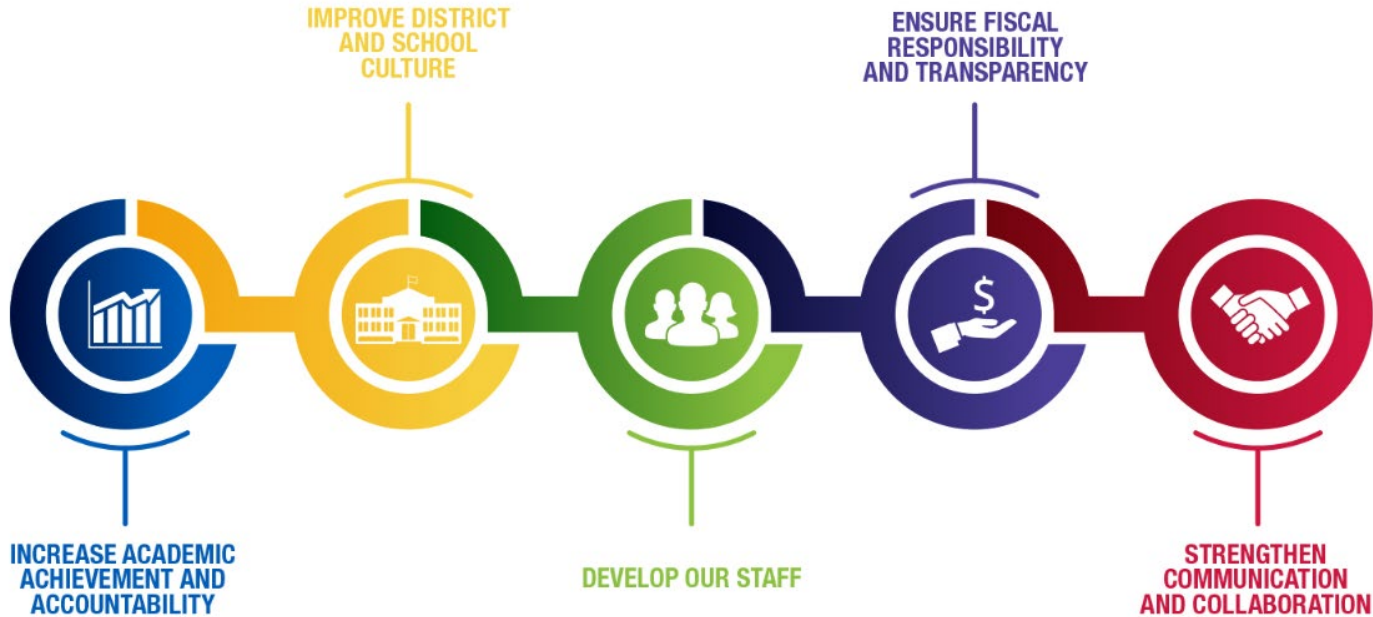


MILWAUKEE
PUBLIC SCHOOLS

Presenters: Eduardo Galvan, Regional Superintendent
Ramon Cruz, Principal, Rogers Street Academy

Dr. Keith P. Posley
Superintendent of Schools

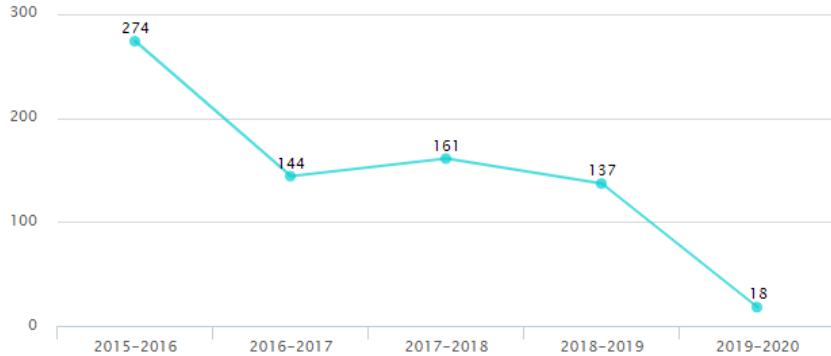
5 Priorities for Success



School Climate Data

Office Discipline Referrals (ODR): 5-Year Trend

Office Discipline Referrals by Year



Tier 1:

- Classrooms PAWS
- PBIS individual PAWS
- Attendance PAWS
- School Store
- Monthly Behavior Events
- Monthly Attendance Events
- End-of-Year Carnival

Tier 2:

- Check-In/Check-Out (CICO)
- Individualized CICO
- Social Academic Instructional Group (SAIG)
- Peer Mediation

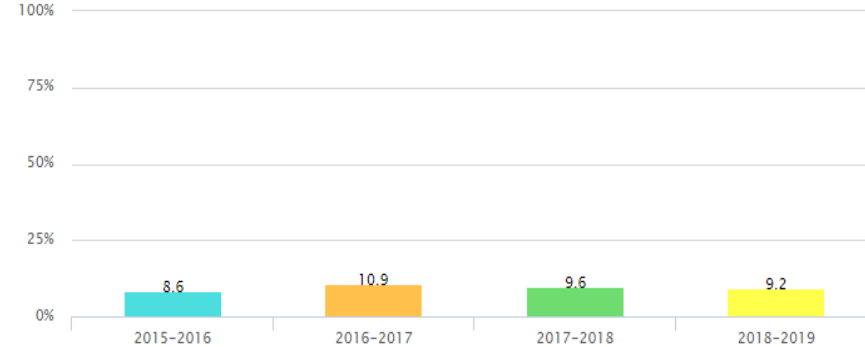
Tier 3:

- Functional Behavioral Assessment/Behavior Intervention Plan (FBA/BIP)

Absenteeism: 4-Year Trend

Absenteeism Trend

Only includes students with at least 45 days of enrollment



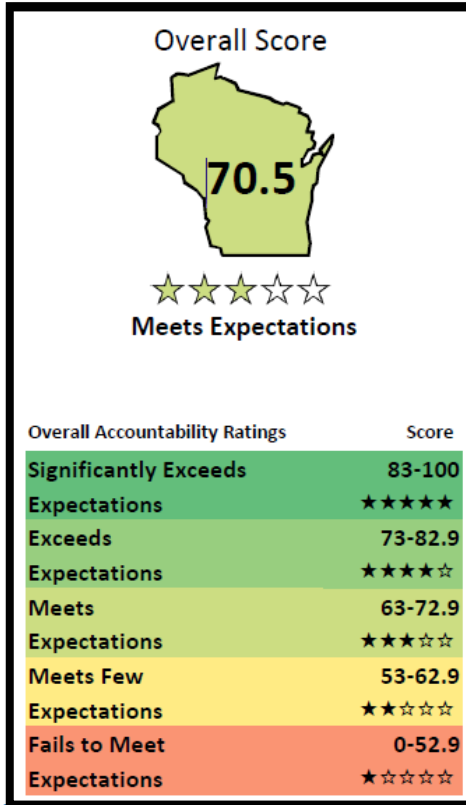
Training and Supports:

- Monthly Building Intervention Team (BIT) - Behavior
 - Teachers attend meetings to discuss data and interventions around data
- Attendance - CICO
 - Paraprofessionals and support staff strengthen relationships to increase attendance
- Be Great Graduate Attendance Initiative
 - Boys & Girls Club collaboration around middle school attendance



WI State Report Card

FY 17 to FY 18 Report Card



Academic Focus Areas:

• Reading:

- **Research-Based Strategy:** Close Reading, Decoding, Summarizing, Fluency
 - Intervention block focused on research-based strategies to guide instruction and planning
 - Interventionists, Achievement Gap Reduction (AGR), School Support Teacher (SST), and Specialists support school-wide Response to Intervention (RTI) blocks
 - Summer grade-level planning and collaboration

➤ **School-wide intervention block**

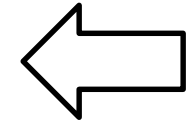
• Math:

- School-wide intervention block time focused on differentiated strategies
- ST Math competitions among grade levels
- After-school Community Learning Center (CLC) math power hour
- Monthly collaboration amongst all staff around mathematical practices
- Monthly Common Assessment Based on Standards (CABS) with feedback and student input

GAP Closure Trends

READING	2016-2017	2017-2018	2018-2019
Spanish Reading STAR 360 Overall Total GAP Closure	NA	-71%	-178.8%
Monolingual Reading STAR360 Overall Total GAP Closure	-7%	-11.1%	-17.9%

Increased GAP Closure in Reading!



Exceeding GAP Closure beyond the district expectations of 10%!

EARLY LITERACY	2017-2018	2018-2019
Spanish Early Literacy STAR360 Overall Total GAP Closure	-497.3%	-321%
Monolingual Early Literacy STAR360 Overall Total GAP Closure	-77.7%	-26.9%



Community Partnerships

Rogers Street Academy is a participating school with the Milwaukee Partnership Grant, and is associated with multiple agencies throughout the city of Milwaukee. These partnerships allow for students to be exposed to a variety of activities and programs throughout the city. Our partnerships allow for students to be a priority in the social and academic setting.



PLAYWORKS
for every kid



Rockwell
Automation

SHARP Literacy



Rogers Street Academy Parental Involvement

Rogers Street Academy (RSA) takes pride in their parent volunteers, and their dedication to supporting the needs of our RSA Community.

Monthly Events

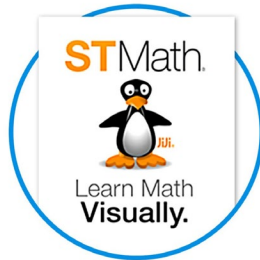
- *School Harvest Fest*
- *School Dance*
- *Community Resource Fair*
- *Dr. Seuss Day*
- *Monthly Classroom Literacy Events*
- *Celebracion de dia de ninos*
- *Muffins with Mom*
- *Donuts with Dad*
- *Monthly PTO Meetings*
- *Weekly ESL classes*
- *Morning greetings*
- *Wisconsin Association for Bilingual Education (WIABE) presenters & attendees*

Rogers Street Academy's
MPS 2018-2019
Volunteer of the Year
Recipient
"Alma Alva"



Annual ST Math Night

Rogers Street Academy is one of two schools to participate in ST Math Nights with family and community involvement. Leaders from California travel to Milwaukee to collaborate with parents and community members in an effort to promote mathematical exploration. Parents and community members have a chance to play while learning mathematical concepts.



- ST Math is offered to 100% of the student population
- Monthly professional developments around the ST Math program for teachers
- After school PD and supports with CLC & Boys & Girls Club (BGC) ST Math time



Rockwell Automation STEM Lab

Through the partnership with Rockwell Automation, Rogers Street Academy was awarded a STEM Lab to enhance students' exploration and knowledge around engineering. Over 500 students received exposure to the Project Lead the Way (PLTW) or STEM curriculum with the use of Rockwell's PLTW Lab.



Collaboration

- STEAM Lab expansion with the Boys and Girls Club
- PLTW curriculum for all 5th-8th grade students
- Monthly Discovery World STEM workshops for 7th and 8th grade



2017-2018 STEMMY Award Winner



Thank you!

