



**MILWAUKEE  
PUBLIC SCHOOLS**

# Central Region Showcase

**February 13, 2024**

**Dr. Keith P. Posley**  
*Superintendent*



**MILWAUKEE  
PUBLIC SCHOOLS**



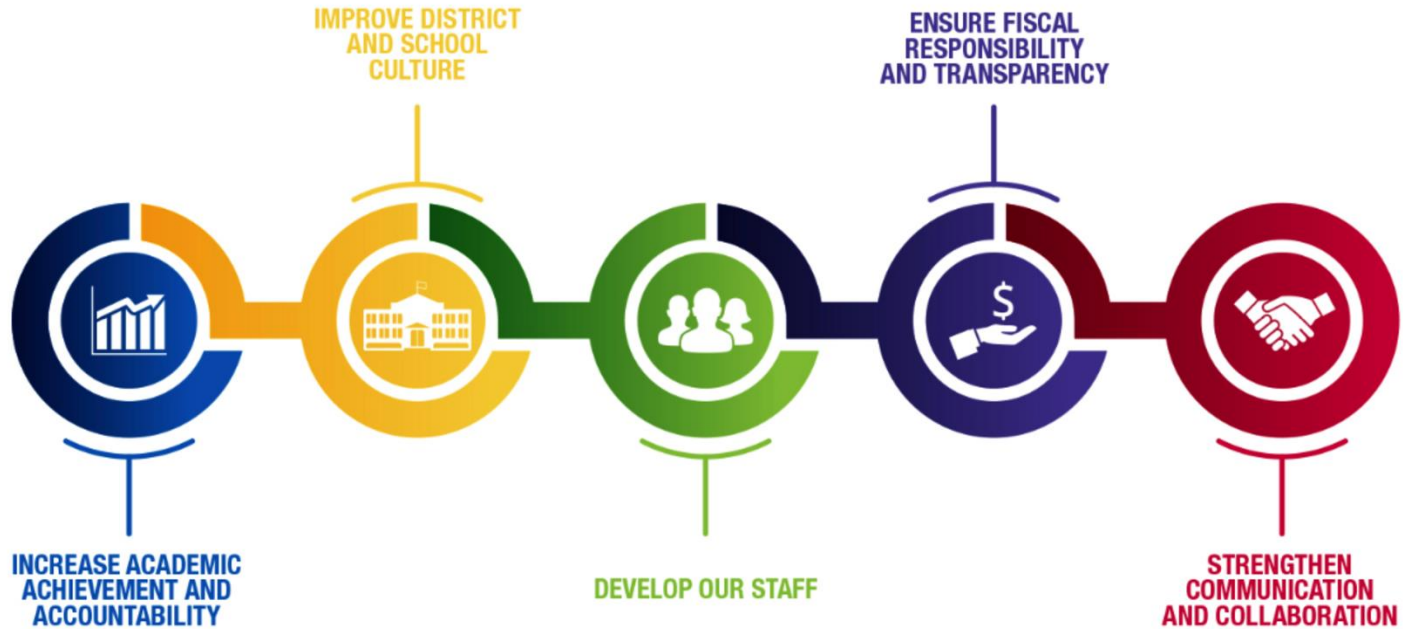
## *Presenters*

Dr. Carletta Noland  
*Regional Superintendent*

Dr. Jeremiah Holiday  
*Instructional Leadership Director*

Ms. Regina Navejar  
*Principal*  
Starms Learning Centers

# *Five Priorities for Success*

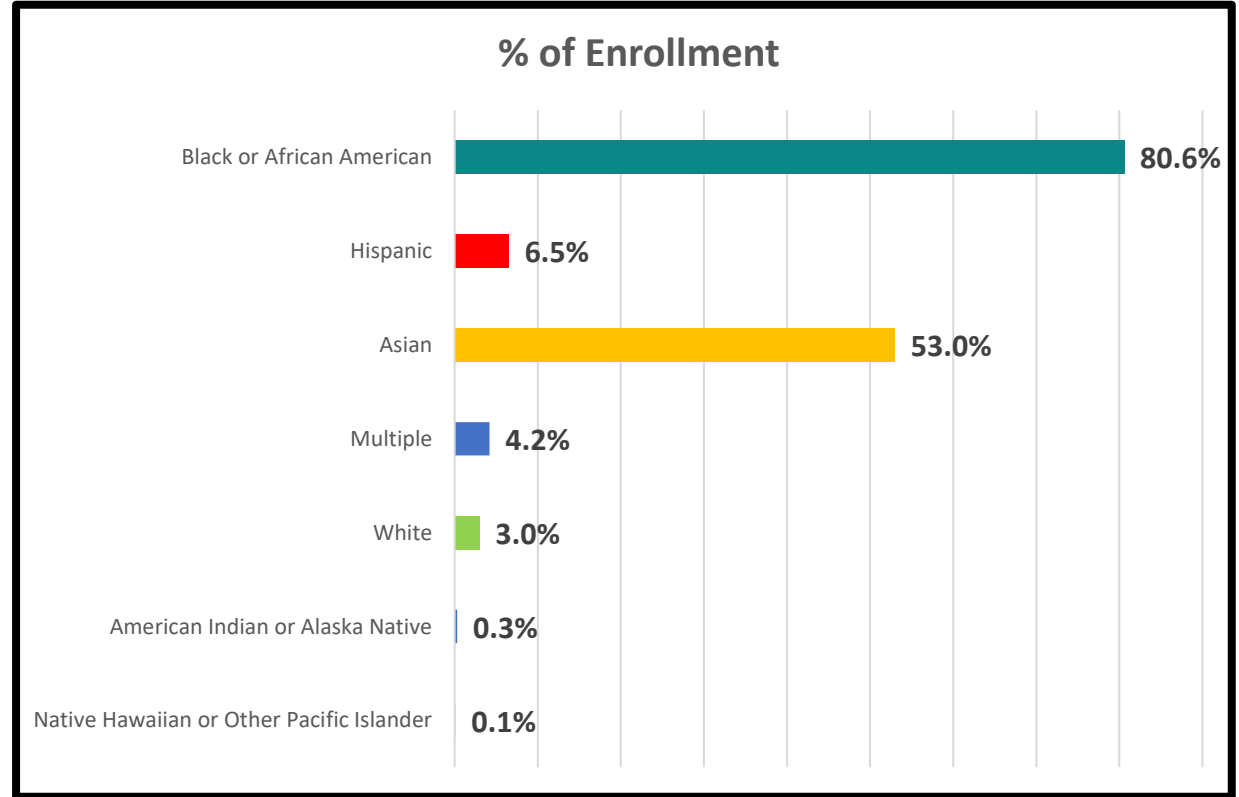


# Central Region Schools

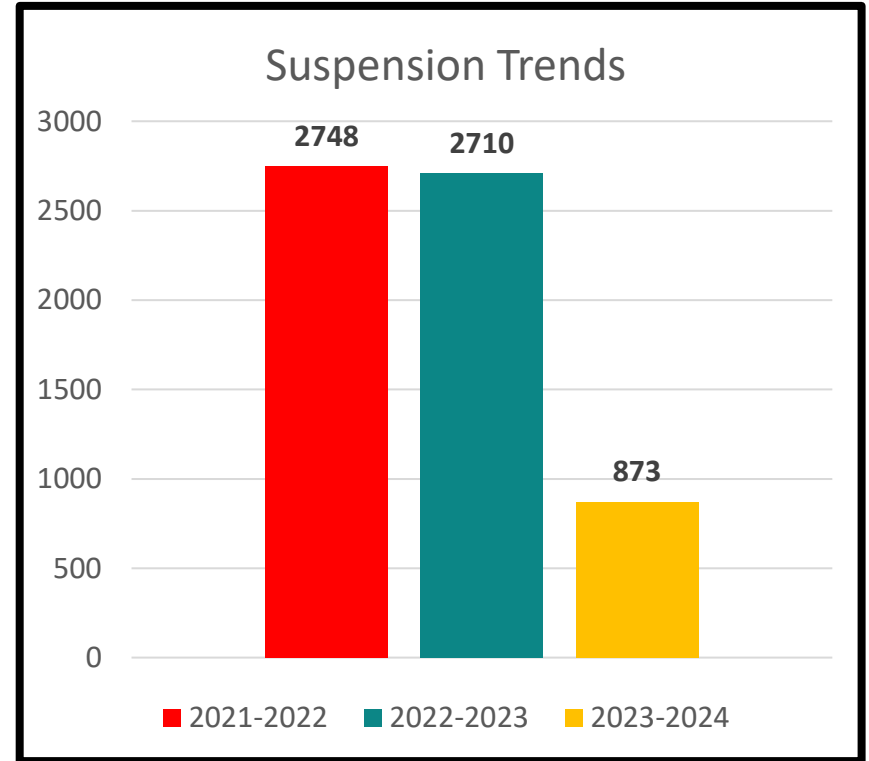
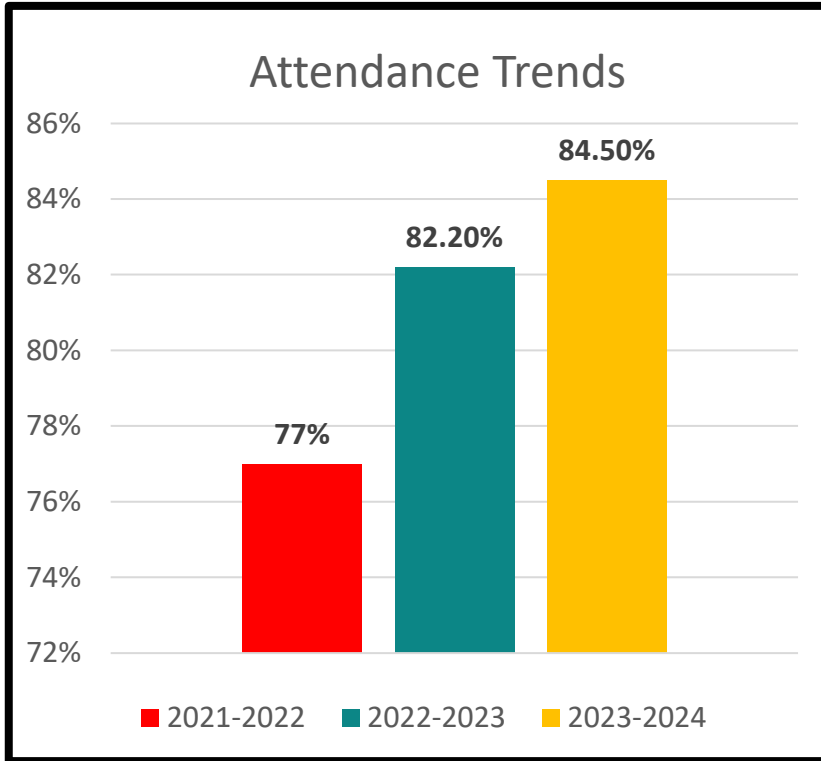
K-5 Schools	K-8 Schools	K-8 Academic Specialty Schools	K-5 Community Schools
<ul style="list-style-type: none"><li>• Clemens</li><li>• Jackson</li><li>• Neeskara</li><li>• Keefe</li><li>• Brown Street</li><li>• Siefert</li></ul>	<ul style="list-style-type: none"><li>• Bethune</li><li>• Burbank</li><li>• Clarke</li><li>• Fifty-Third</li><li>• Franklin</li><li>• Hi-Mount</li><li>• Story</li><li>• LaFollette</li><li>• Metcalfe</li><li>• Starms Learning Centers</li><li>• Sherman</li><li>• Thurston Woods</li></ul>	<ul style="list-style-type: none"><li>• Barbee</li><li>• Hawley</li><li>• Grant Gordon</li><li>• Starms EC</li><li>• French Immersion</li><li>• Marvin Pratt</li><li>• Andrew Douglas</li></ul>	<ul style="list-style-type: none"><li>• Auer</li><li>• Hopkins- Lloyd</li><li>• Westside</li></ul>

# Central Region Demographics

- 8,059 Students
- 28 Schools
- 6.0% English Language Learners
- 21.2% Students with Disabilities
- 80.1% Economically Disadvantaged



# Central Region Climate Data





**Starms Early Childhood Center (ECC)**

2616 W. Garfield Ave., Milwaukee, WI 53205  
AM or PM K3; full-day K4 and K5  
Before- and after-school care available

Learn More about Enrolling:  
Go to [ECC](#) or [DLC](#) Websites.

**Starms Discovery Learning Center (DLC)**

2035 N. 25th St., Milwaukee, WI 53205  
Grades 1 – 8  
Before- and after-school care available

# Starms Learning Centers



## Demographics

### 526 Students

- 294 Starms Early Childhood
- 232 Starms Discovery Learning Center

### Students with Disabilities

- 26.5% Starms Early Childhood
- 25.9% Starms Discovery Learning Center

### Economically Disadvantaged

- 83.3% Starms Early Childhood
- 89.7% Starms Discovery Learning Center

### Student Race

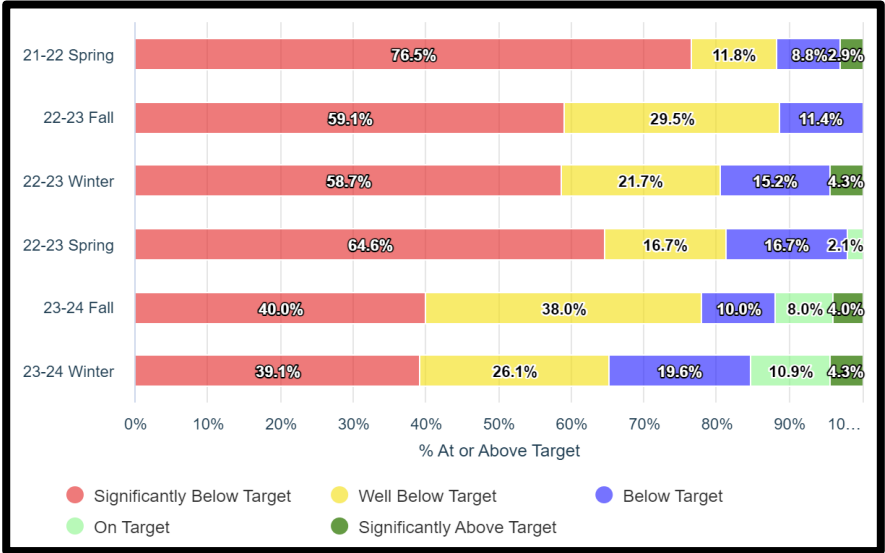
- 89.9 % Black or African American
- 5.5% Hispanic
- 2.9% Multiple
- 1.0% White
- .08% Asian



# Starms Learning Centers: Student Achievement

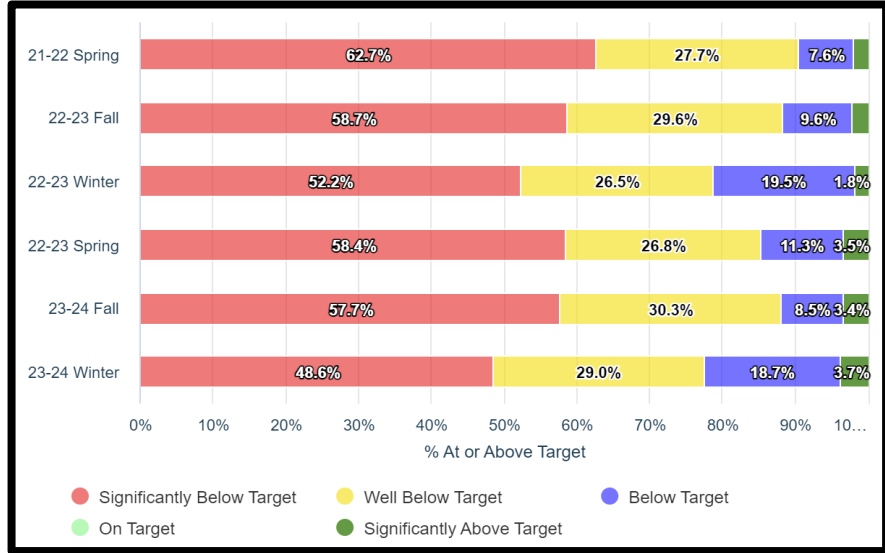
## Early Literacy: 21-22 Compared to 23-24

- Decreased Sig. Below from 76.5% to 39.1% (-37.4%)
- Increased On Target to Sig. Above Target from 2.9% to 15.2% (+12.3%)



## Math: 21-22 Compared to 23-24

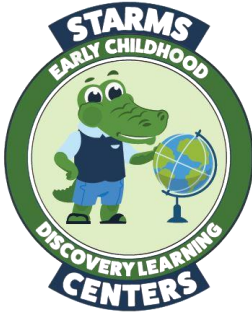
- Decreased Sig. Below from 62.7% to 48.6% (-14.1%)
- Increased On Target to Sig. Above Target from 2.0% to 3.7% (+1.7%)



# Starms Learning Centers: Educating the Whole Child

## What the Data Tells Us

- Behavior Referrals Decreased: 1,241 in 2021-22 to 401 in 2023-24 (-840 fewer referrals)
- Suspensions Decreased from 19.8% 2021-22 to 3.8% in 2023-24 (-16%)
- Attendance Increased: 71.6% in 2020-21 to 86.4% (+14.8%)
- Increase in Early Literacy and Math Scores



Learning Occurs Here

Self-Actualization

Esteem

Love and Belonging

Safety Needs

Physiological Needs

Maslow's Hierarchy of Needs for Learning



**MILWAUKEE  
PUBLIC SCHOOLS**

**Thank  
You!**