

Equity, Access, and Inclusion

June 8, 2021

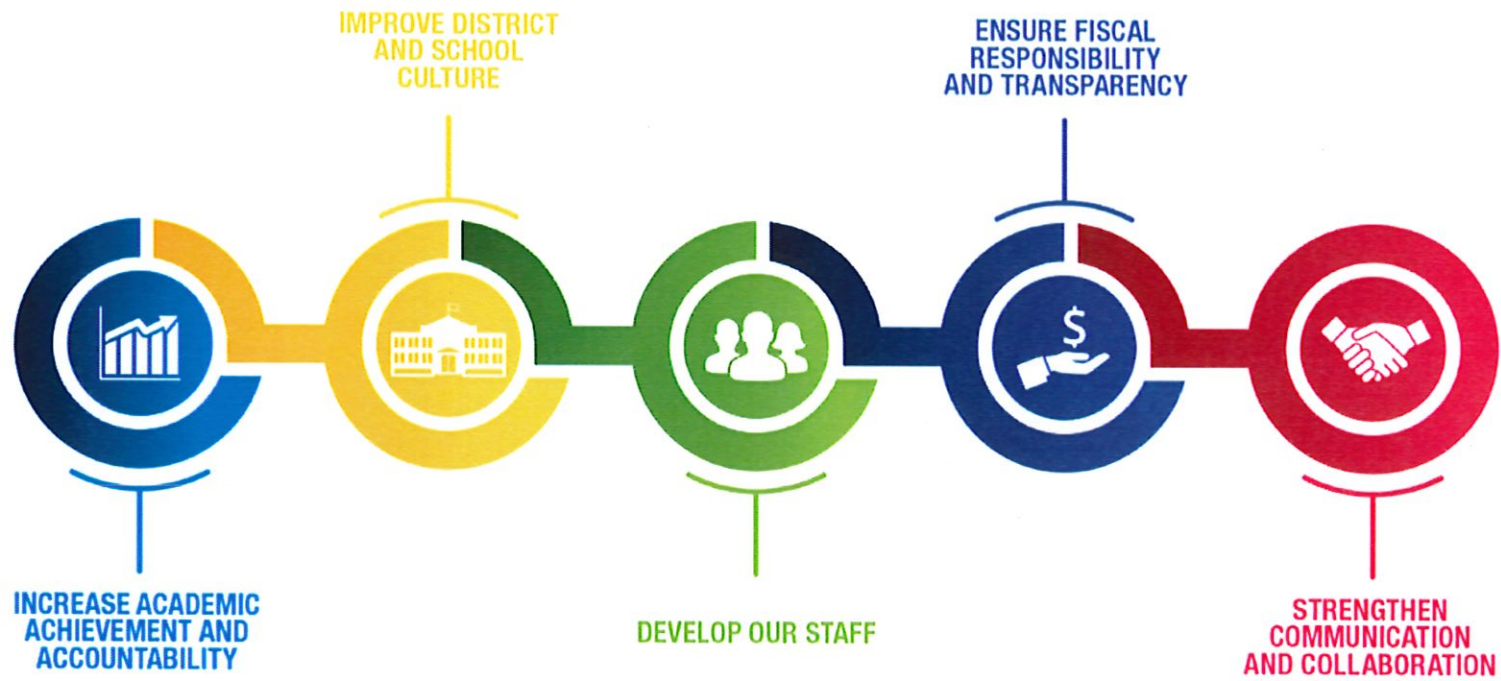


MILWAUKEE
PUBLIC SCHOOLS

Presenter:
Patricia A. Ellis, Ed.D
Department of Equity, Access, and Inclusion

Dr. Keith P. Posley, Superintendent

Five Priorities for Success

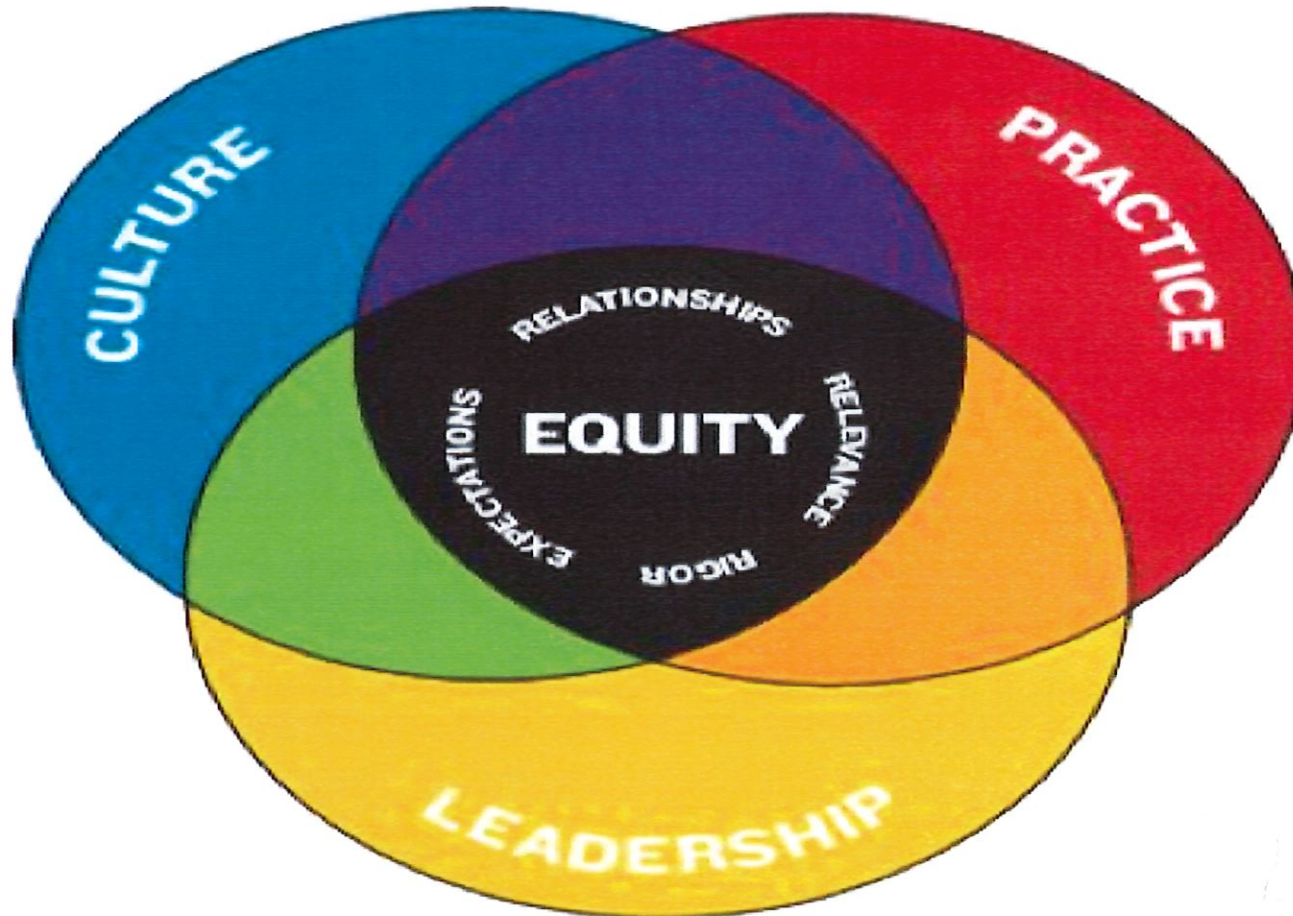


Equity as Defined by Milwaukee Public Schools

Equity is defined as an allocation of district resources, supports, and opportunities that is based on the needs of students and staff.



Embedded in Our Fabric



Equity Guidebook Goals

Goal 1: Equity in Academics

Goal 2: Equity in Cultural and Linguistic Awareness and Responsiveness

Goal 3: Equity in Human Resources

Goal 4: Equity in Finance

Goal 5: Equity for Students, Families, Educators, and Community Stakeholders



2020-2021 Professional Development

- **Equity in Academics**
- **Culturally and Linguistically Responsive Practices**
- **Anti-Racism**
- **Social Emotional Learning**



2020-2021 Equity Efforts to Celebrate!

- **Schools recognized by the Wisconsin RtI Center**
- **Increased enrollment in Advanced Placement courses**
- **Expanded professional development offerings**
- **Facilitated recruitment efforts for Central and Northwest Region schools**
- **Conducted Ambitious Instruction Budget Conversations**
- **Provided virtual parent and family engagement**

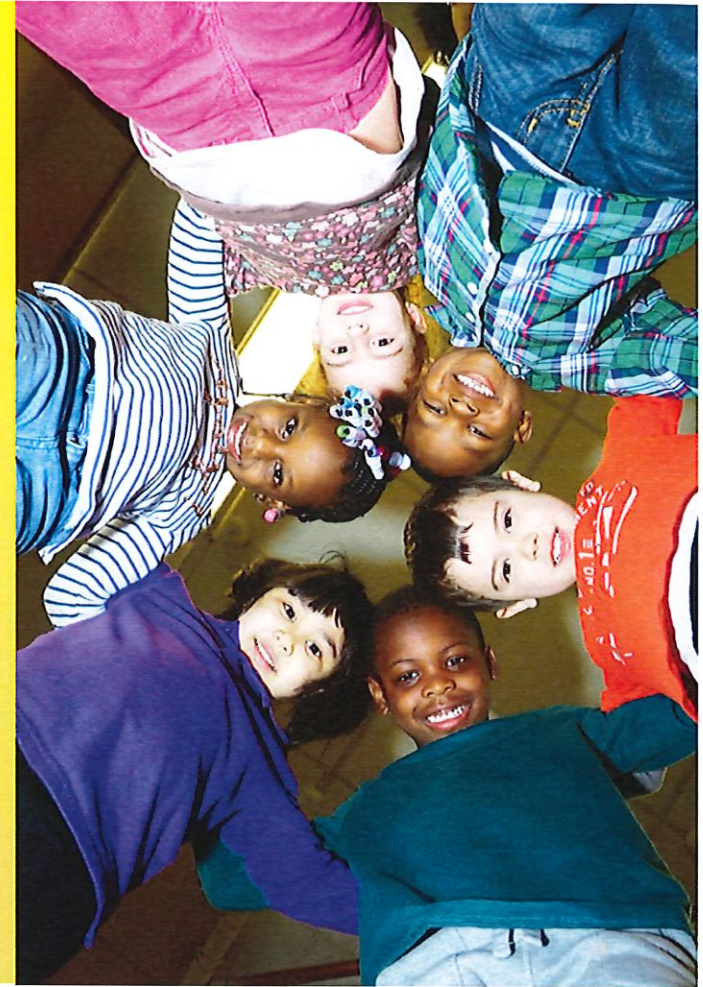


Moving Forward

- **Accelerate academics for the 21st Century and beyond**
- **Expand professional learning opportunities**
- **Foster social emotional learning**
- **Cultivate cultural and linguistic practices**



Thank you.



Dr. Keith P. Posley, *Superintendent*

© 2021 Milwaukee Public Schools • 9